

# PSExplorer Deployment Document

---

<b>Rohit Singh</b>	:	Coordinator
<b>Veda Prakash Girmaji</b>	:	Developer
<b>Rajeswari Mohandas</b>	:	Developer

**10/26/2010**

# PSExplorer Deployment Document

## Table of Contents

1. Prerequisite: .....	2
2. Deploying using PowerShell Script .....	2
3. Deploying manually and configuring PSExplorer .....	5

# PSExplorer Deployment Document

## **Objective:**

This document contains the necessary steps that are required to deploy the PSExplorer in the local system. PSExplorer can be deployed in two ways. One is using the PowerShell script or manual configuration.

## **1. Prerequisite:**

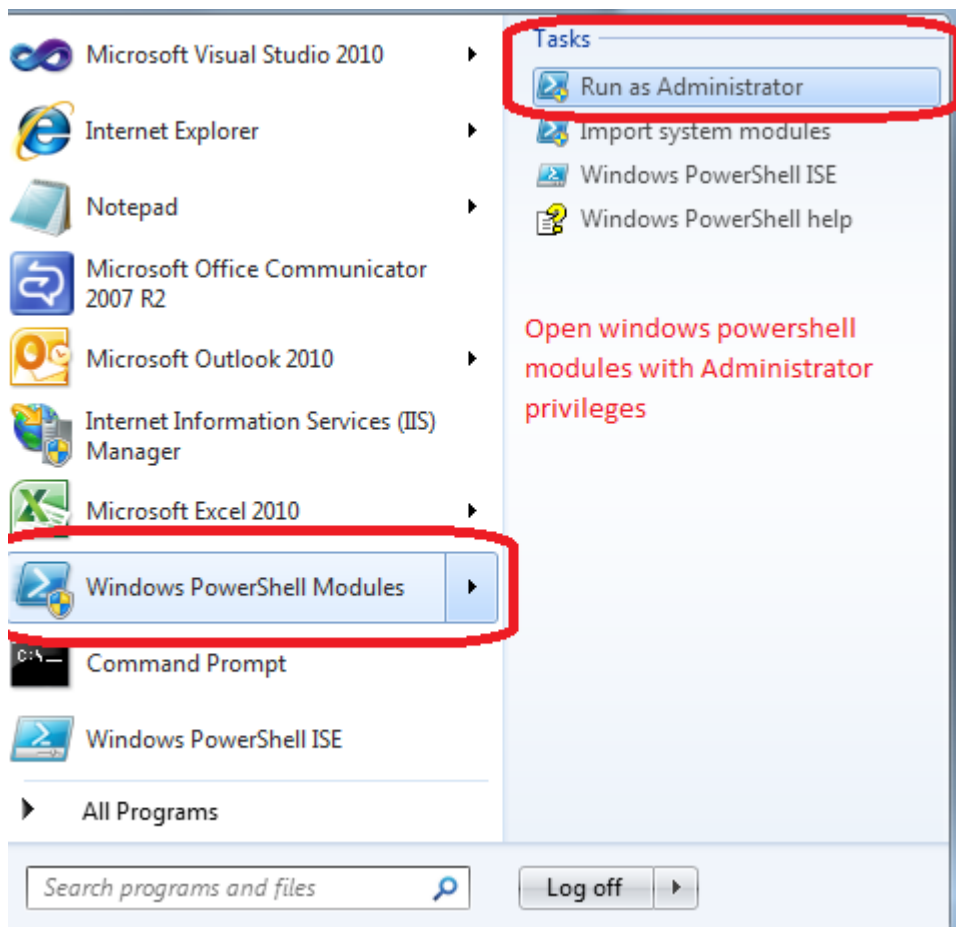
- IIS 7
- Internet Explorer 7 or 8.
- .NET Framework 4.0
- Windows PowerShell 1.0 and above.
- ASP.NET MVC 2.0

## **2. Deploying using PowerShell Script**

To deploy the PSExplorer we need to create a website and application pool in the local IIS 7.

### **Step 1: Go to Start→Windows PowerShell Modules**

# PSExplorer Deployment Document



## Note:

PSExplorer.ps1 is used to create website and application pool in the local IIS. If you want to change the website name, application pool and port no, open the PSExplorer.ps1 file and change it. Then follow the below steps to execute the script.

## **Step 2: Set the location to the deployment folder**

NOTE: Edit the "PSExplorer.ps1" (open it with notepad) file and change the path physical path

```
# Creating new web site
# iis:\Sites\SPLIT - SPLIT is the name of the web site to be creating on IIS.
#bindingInformation=":8080:localhost" - 8080 is the port number
```

Point to downloaded PSExplorer deployment folder

```
New-Item iis:\Sites\PSExplorer -bindings @{protocol="http";bindingInformation=":9999:localhost"} -physicalPath
```

E:\Downloads\psexplorer-563\PSExplorer

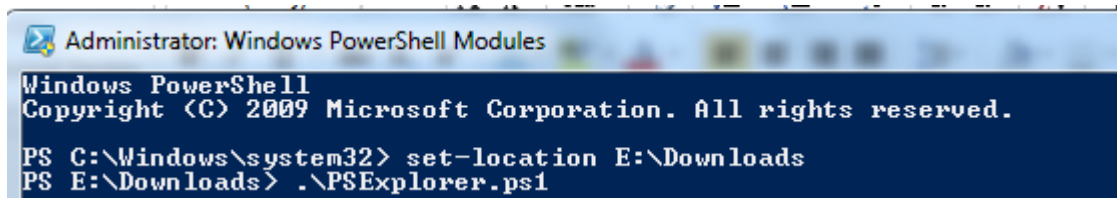
```
#creation new application pool
```

# PSExplorer Deployment Document

If you have downloaded the "PSExplorer" folder to "E:\Downloads" then set the location to the respective folder in the Windows PowerShell.

"Set-location E:\Downloads"

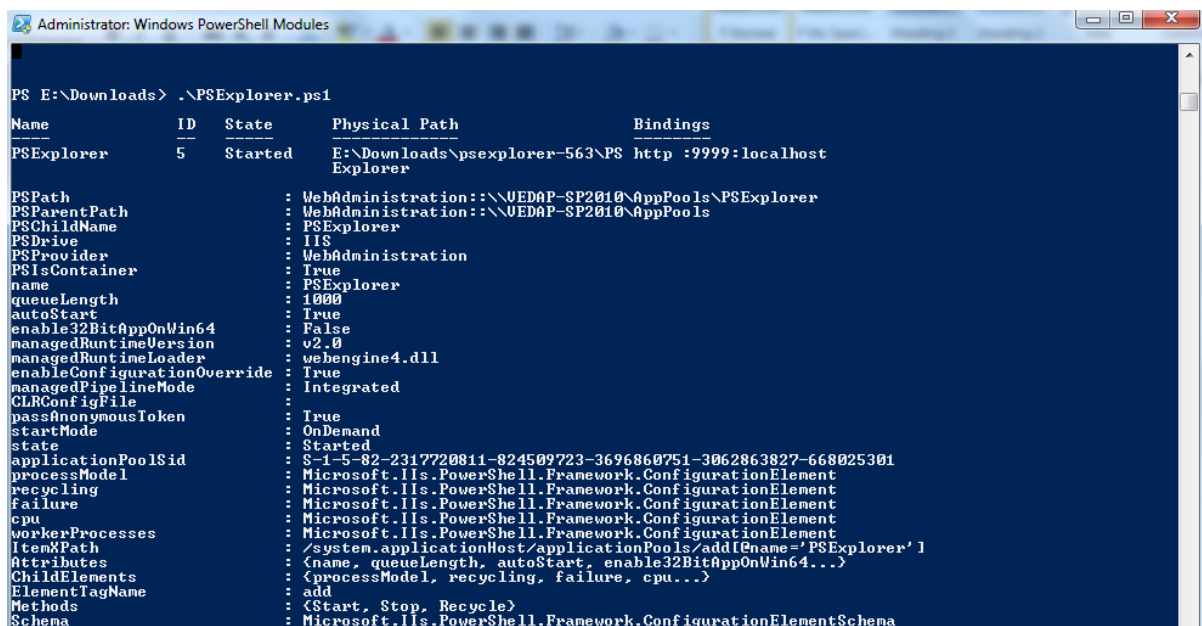
Once the path is set now run the "PSExplorer.ps1"



```
Administrator: Windows PowerShell Modules
Windows PowerShell
Copyright (C) 2009 Microsoft Corporation. All rights reserved.

PS C:\Windows\system32> set-location E:\Downloads
PS E:\Downloads> .\PSExplorer.ps1
```

## **Step 3: After executing .ps1 file, IE window will pop up with the created "PSExplorer" site URL**



```
Administrator: Windows PowerShell Modules

PS E:\Downloads> .\PSExplorer.ps1

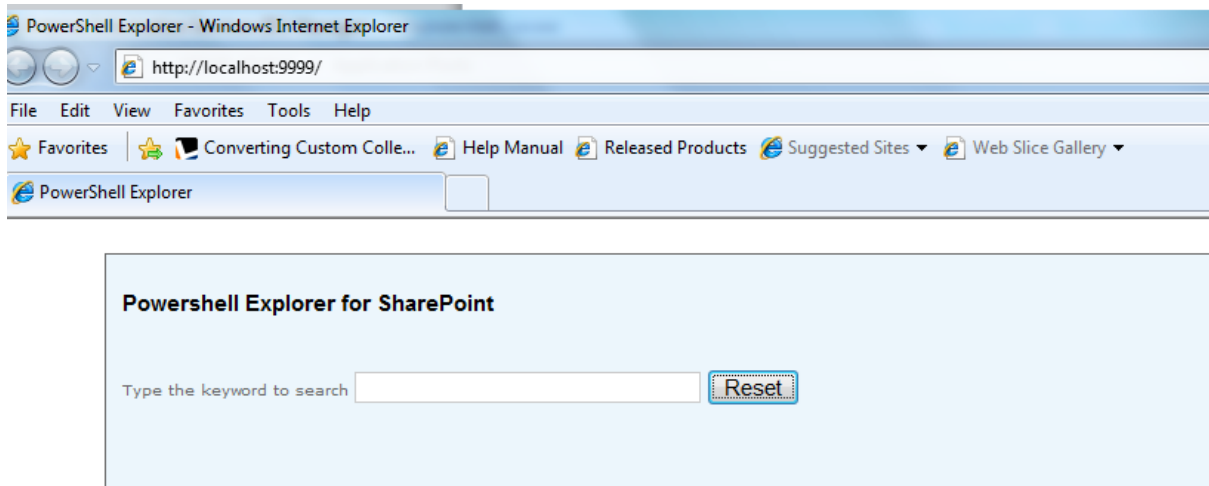
Name          ID      State      Physical Path          Bindings
-----
PSExplorer     5      Started    E:\Downloads\psexplorer-563\PS Explorer    http :9999:localhost

PSPPath          : WebAdministration::\VEDAP-SP2010\AppPools\PSExplorer
PSParentPath     : WebAdministration::\VEDAP-SP2010\AppPools
PSChildName      : PSExplorer
PSDrive          : IIS
PSProvider       : WebAdministration
PSIsContainer    : True
name             : PSExplorer
queueLength      : 1000
autoStart        : True
enable32BitAppOnWin64 : False
managedRuntimeVersion : v2.0
managedRuntimeLoader : webengine4.dll
enableConfigurationOverride : True
managedPipelineMode : Integrated
CLRConfigFile    : 
passAnonymousToken : True
startMode        : OnDemand
state            : Started
applicationPoolSid : S-1-5-82-2317720811-824509723-3696860751-3062863827-668025301
processModel     : Microsoft.IIS.PowerShell.Framework.ConfigurationElement
recycling        : Microsoft.IIS.PowerShell.Framework.ConfigurationElement
failure          : Microsoft.IIS.PowerShell.Framework.ConfigurationElement
cpu              : Microsoft.IIS.PowerShell.Framework.ConfigurationElement
workerProcesses  : Microsoft.IIS.PowerShell.Framework.ConfigurationElement
ItemXPath        : /system.applicationHost/applicationPools/add[@name='PSExplorer']
Attributes       : {name, queueLength, autoStart, enable32BitAppOnWin64...}
ChildElements    : {processModel, recycling, failure, cpu...}
ElementTagName   : add
Methods          : {Start, Stop, Recycle}
Schema           : Microsoft.IIS.PowerShell.Framework.ConfigurationElementSchema
```

## Verification Instructions:

If you are able to see the below explorer window then deployment is successful. You can start exploring the PSExplorer.

# PSExplorer Deployment Document

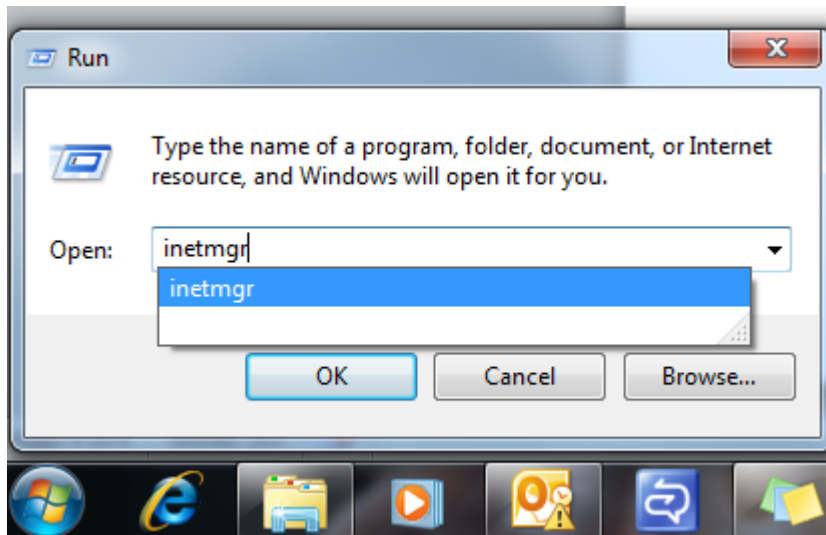


### **3. Deploying manually and configuring PSExplorer**

In case if "Windows PowerShell Modules" is not installed and if you wish to manually configure then follow below steps.

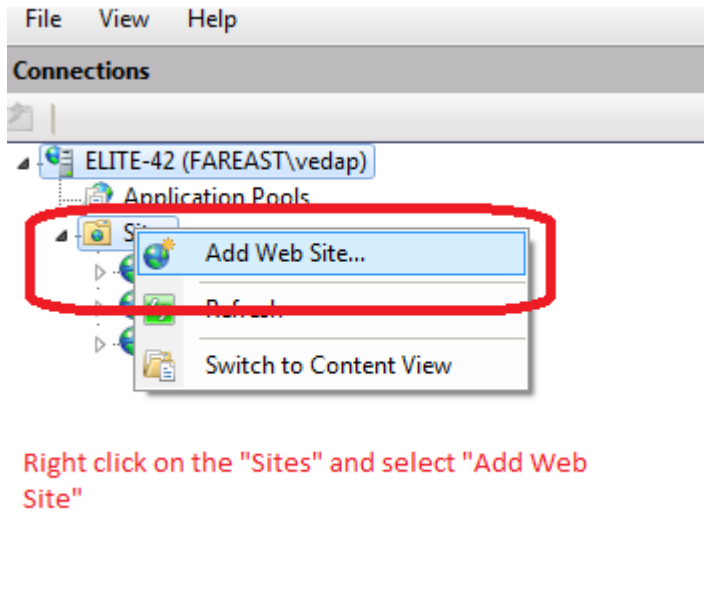
**Step 1: Download the deployment folder and save it to the physical drive.**

**Step 2: Go to Start→Run→type inetmgr.**



# PSExplorer Deployment Document

## Step 3: Creating a web site



Right click on the "Sites" and select "Add Web Site"

# PSExplorer Deployment Document

## Step 4: Creating website

**Add Web Site**

Enter the Site name

Site name: PSExplorer

Application pool: PSExplorer

Select...

Content Directory

Physical path: D:\Downloads\psexplorer-692\PSExplorer

Pass-through authentication

Map the path of the downloaded deployment folder

Connect as... Test Settings...

Change the port

Binding

Type: http

IP address: All Unassigned

Port: 9972

Host name:

Example: www.contoso.com or marketing.contoso.com

☒ Start Web site immediately

OK Cancel



# PSExplorer Deployment Document

## Step 5: Once the web site is created, change the application pool .Net framework version

Connections

- ELITE-42 (FARFAST\vedap)
  - Application Pools
  - Sites
    - Default Web Site
    - PSExplorer
    - PSExplorer1

Select "PSExplorer" application pool, right click and select "Advanced Settings"

Application Pools

This page lets you view and manage the list of application pools on the server. Application pools are associated with applications, and provide isolation among different applications.

Filter: [v] Go [v] Show All Group by: No Grouping [v]

Name	Status	.NET Framework Version	Managed Pipeline Mode	Identity	Applications
DefaultAppPool	Started	v2.0	Integrated	ApplicationPoolId...	1
PSExplorer	Started	v4.0	Integrated	LocalService	1
			Integrated	LocalSystem	1

Context menu for PSExplorer:

- Add Application Pool...
- Set Application Pool Defaults...
- Start
- Stop
- Recycle...
- Basic Settings...
- Recycling...
- Advanced Settings...
- Remove
- View Applications
- Help
- Online Help

Change .Net framework version from v2.0 to v4.0

This page lets you view and manage the list of application pools on the server. Application pools are associated with applications, and provide isolation among different applications.

Advanced Settings

(General)

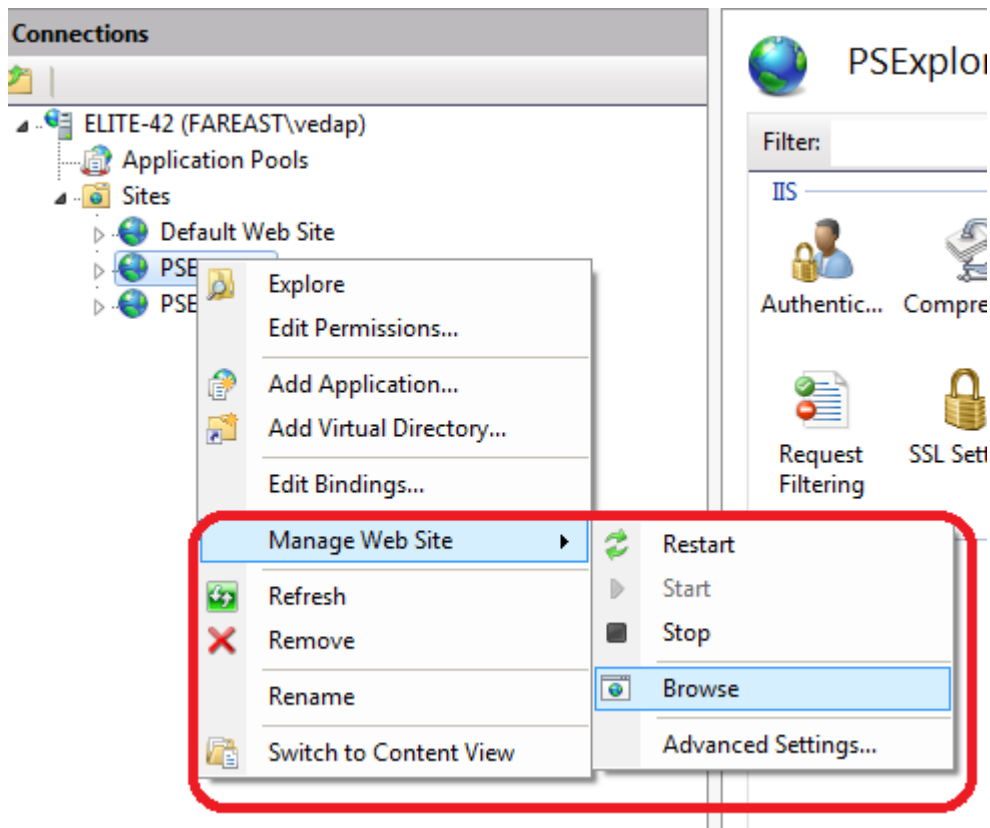
.NET Framework Version	v4.0
Enable 32-bit Applications	False
Managed Pipeline Mode	v2.0
Name	No Managed Code
Queue Length	1000
Start Automatically	True
<b>CPU</b>	
Limit	0
Limit Action	NoAction
Limit Interval (minutes)	5
Processor Affinity Enabled	False
Processor Affinity Mask	4294967295
<b>Process Model</b>	
Identity	LocalService
Idle Time-out (minutes)	20
Load User Profile	False
Maximum Worker Processes	1
Ping Enabled	True

**.NET Framework Version**  
[managedRuntimeVersion] Configures the application pool to load a specific version of the .NET Framework. Selecting "No Managed Code" will cause all ASP.NET requests to fail.

OK Cancel

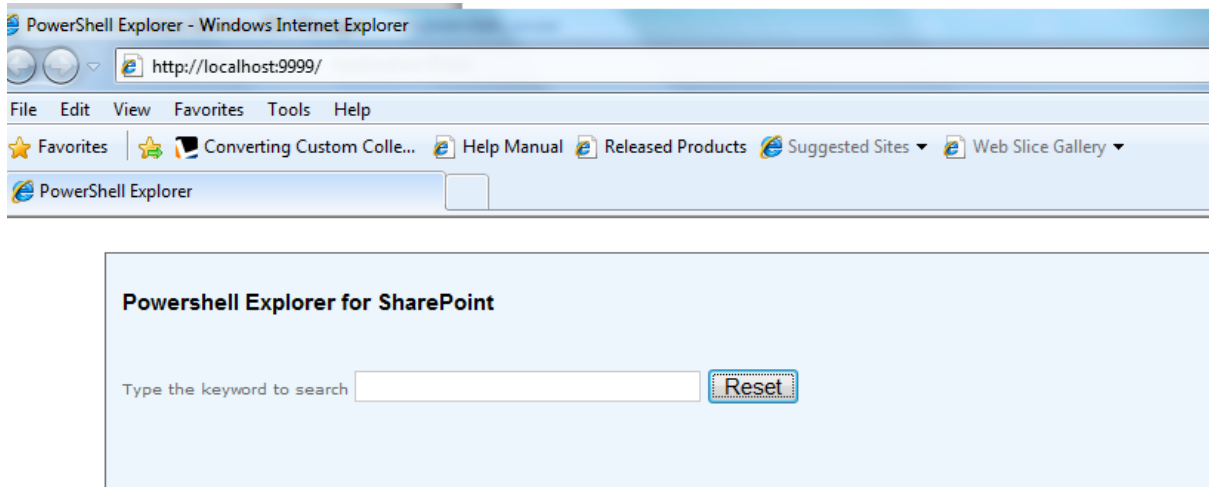
# PSExplorer Deployment Document

**Step 6: Go to "Sites" select "PSExplorer" site → right click select "Manage Web Site"→select Browse**



# PSExplorer Deployment Document

PS Explorer site is launched

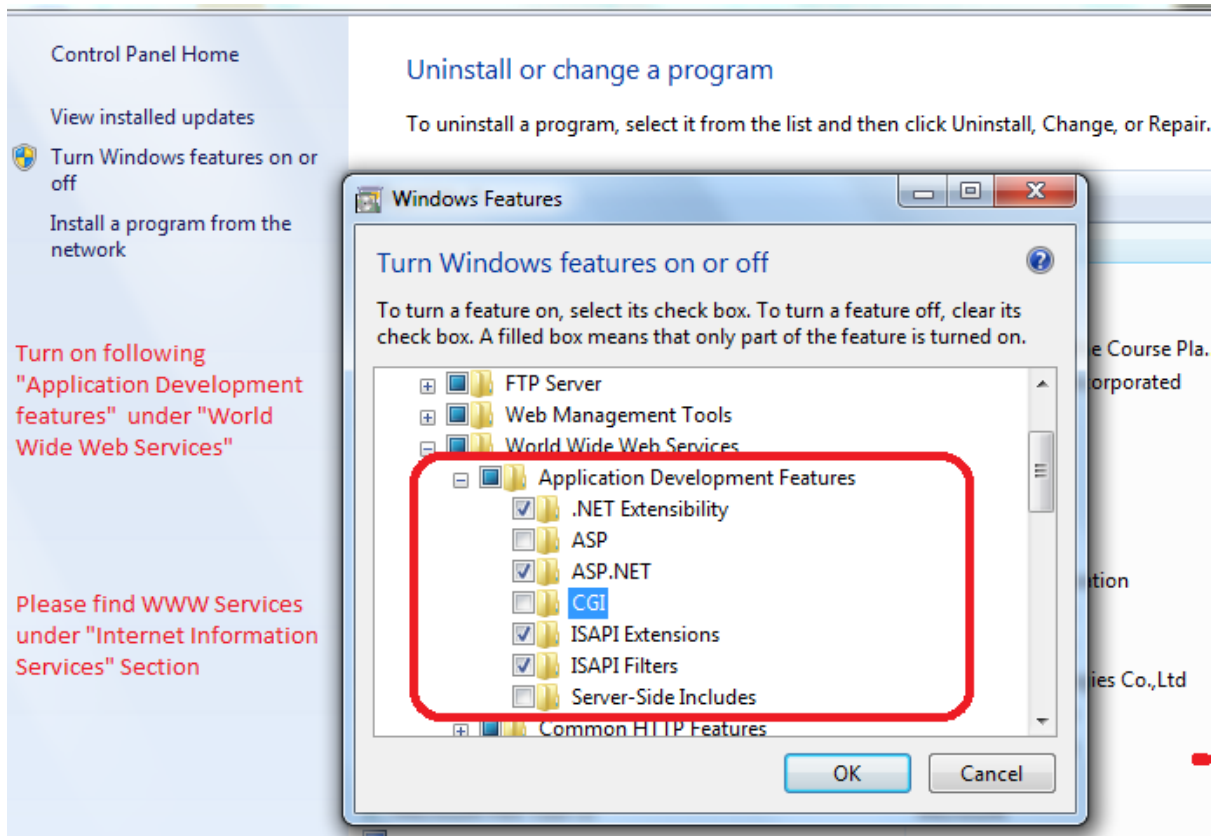


**Note:**

If you get "500-internal server error" then follow below steps to make it work

**Step 1:** Go to Control Panel → Click "Turn Windows features on or off" → Turn on .NET, ASP.NET and ISAPI "Application Development features"

# PSExplorer Deployment Document



**Step 2:** Run the "aspnet\_regiis.exe" to install ASP.NET.

