



metaPost Instruction Manual

for the Professional and Community Editions of metaPost

IT Crossing
3/25/2008

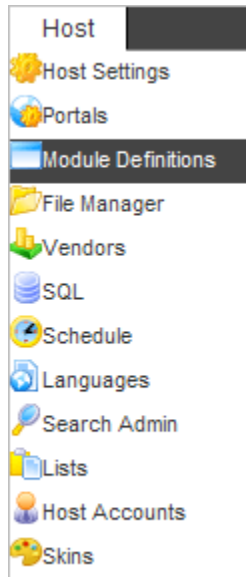
Contents

DotNetNuke Installation	4
MetaWeblog Client Configuration	5
Windows Live Writer	5
Microsoft Word 2007	10
Working With Content in Windows Live Writer	14
Adding Content	14
Editing Existing Entries.....	16
Working with Summaries and Extended Entries	18
Auto Image Expander (Auto Gallery).....	19
Setting Image Properties.....	20
Auto Link Expander.....	22
Auto Footnote Expander.....	23
Auto Video Expander	24
Auto Tabs	25
Windows Live Writer Plug-ins	27
Working with Content in Word 2007	28
Adding Content	29
Editing Existing Entries.....	29
Working with Summaries and Extended Entries	30
Working with Images.....	30
Providers.....	30
DNN Blog Module Provider	31
Installation.....	31
Unique Features	31
Ventrian News Articles Provider	32
Installation.....	32
Unique Features	32
DNN FAQs Module Provider.....	33
Installation.....	33

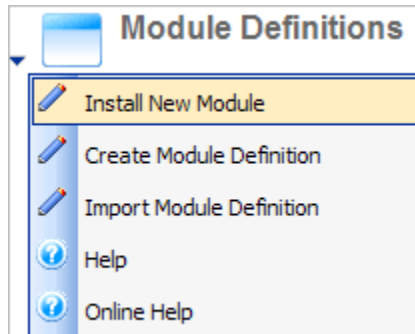
Unique Features	33
DNN Text/HTML Module Provider	34
Installation.....	34
Unique Features	34
ZLDNN DNNArticle Provider.....	34
Installation.....	34
Unique Features	34
Portalfabrik Magic Content Provider.....	35
Installation.....	35
Unique Features	35
Additional Resources.....	37
Troubleshooting	37
An Error 0 message appears when I try to create my first account	37
The styles aren't picked up by Windows Live Writer for the Text/HTML module	39
An error occurred while trying to authenticate the user	39
I've added the metaPost Module to a page, but I can't see it	40

DotNetNuke Installation

Installing metaPost is no different than installing any other DotNetNuke module. Simply log in to DotNetNuke using a superuser account such as the host account and select Module Definitions from the Host menu as follows:



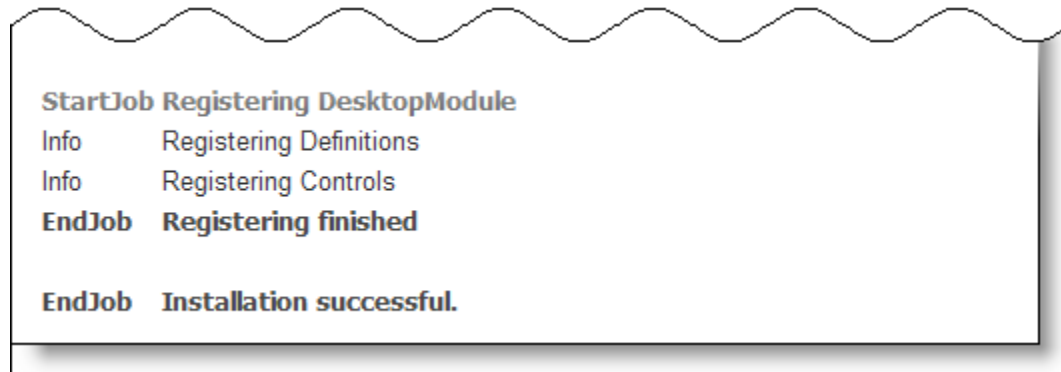
From the Module Definitions screen, select Install New Module as follows:



Click the Browse button and select the local location where you saved the metaPost installation zip file and then click the Install New Module Link as follows:



A successful installation will result in a series of confirmation messages followed by a final confirmation message as follows:



Congratulations! You've successfully installed metaPost and now you're ready to configure a client to begin posting to DotNetNuke!

MetaWeblog Client Configuration

metaPost has been configured to support a variety of clients which support the MetaWeblog API. One of the most popular clients to use is Windows Live Writer, which is available free from Microsoft (<http://get.live.com/writer/overview>). While there is limited support for some of the advanced publishing features available with metaPost, Word 2007 and OneNote can also be used as clients.

Windows Live Writer

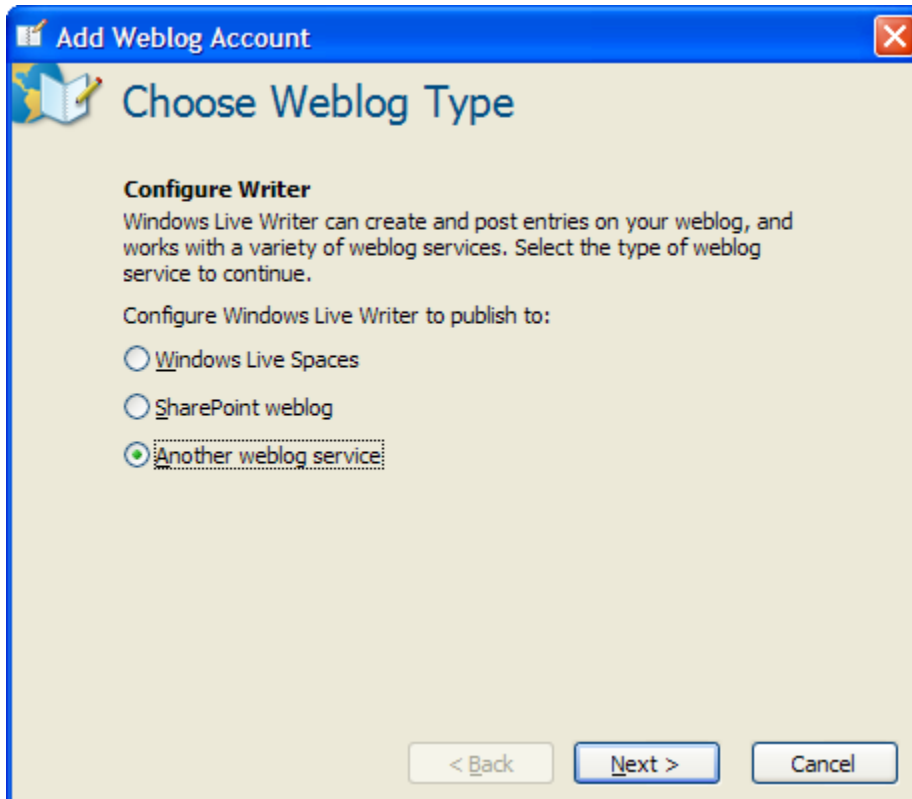
The first step in using Windows Live Writer to publish content to DotNetNuke is to configure an account, but before you configure your account, you'll need to decide which provider you want to use. Content is added to your DotNetNuke portal using a variety of modules and metaPost providers have been created for some of the common modules used to manage site content. To view a list of the current metaPost providers available, visit dnn.itcrossing.com. While some providers support more advanced features during account configuration, the basic configuration of an account with Windows Live Writer can be completed in just a few steps. We'll use the blog module provider as an example.

If you haven't already downloaded and installed Windows Live Writer, you'll want to complete that step first (<http://get.live.com/writer/overview>).

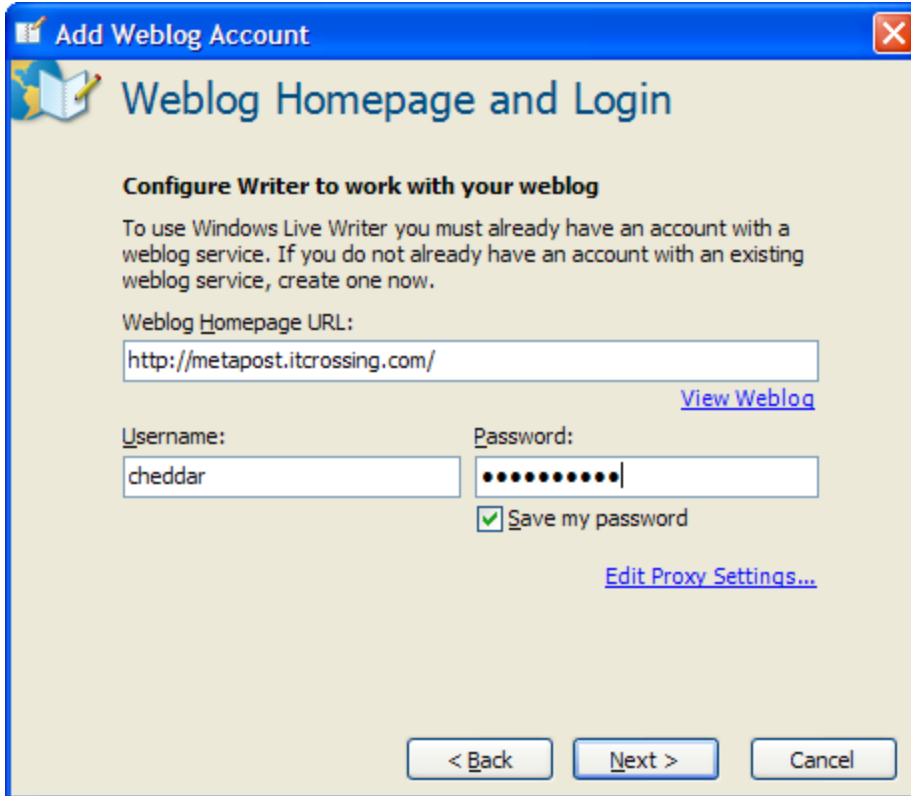
Next, launch Windows Live Writer. The first time you run Windows Live Writer after installation, you may see a window welcoming you to the World of Blogging as follows:



Just select I already have a weblog set up and click Next. From here, you will proceed through a series of windows that allow you to connect to your blog. The next window in this installation wizard will prompt you for the type of blog you're using as follows:



Select Another weblog service and click next as shown above. This will take you to a window with a form where you are able to enter the homepage of the site to which you will be connecting along with a the username and password you'll be using to connect to your metaPost provider. Simply enter the URL to the site to which you will connect and enter the DotNetNuke username and password you will use to post entries through metaPost.



Add Weblog Account

Weblog Homepage and Login

Configure Writer to work with your weblog

To use Windows Live Writer you must already have an account with a weblog service. If you do not already have an account with an existing weblog service, create one now.

Weblog Homepage URL:

[View Weblog](#)

Username: Password:

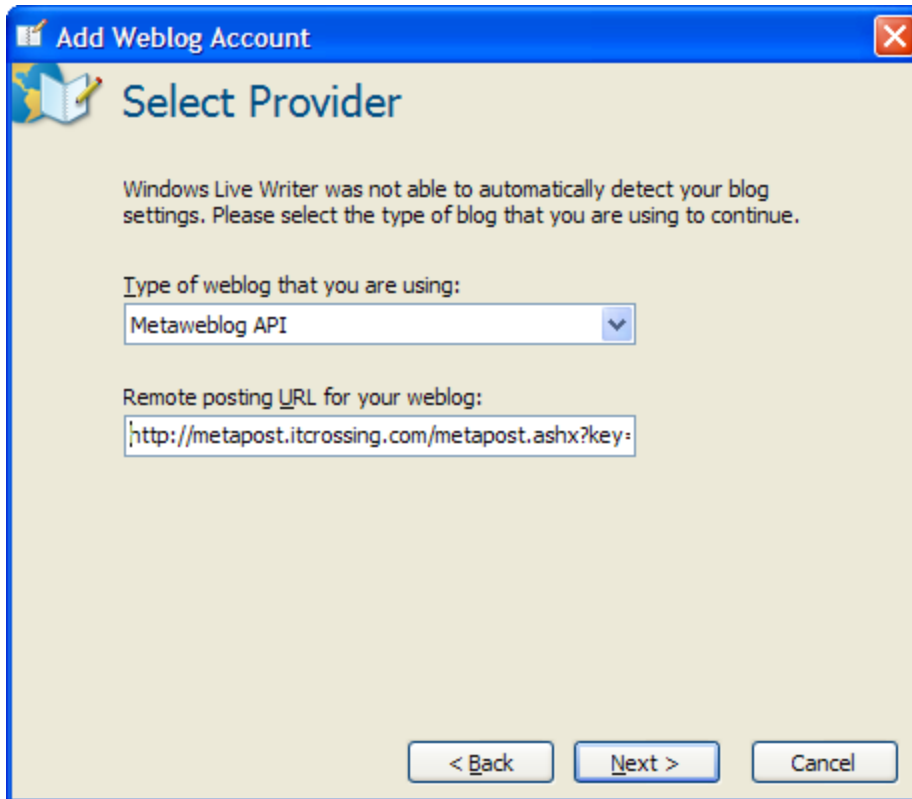
☒ Save my password

[Edit Proxy Settings...](#)

< Back Next > Cancel

Click Next to enter select your provider and enter the actual posting URL needed to create an entry using one of the metaPost providers. In this next screen, you should choose Metaweblog API as the type of weblog that you are using. You will also enter the posting URL to the root of your portal.

If you are posting to a child portal or to an instance of DotNetNuke that has been installed in a virtual directory, you will include the child portal or the virtual directory in the URL. For example, if I were posting to a child portal named shops at <http://metapost.itcrossing.com/>, I would enter the following URL: <http://metapost.itcrossing.com/shops/metapost.ashx?key=text/html> in order to connect to the text/html provider. The following screenshot shows the entry required to connect to the FAQs metaPost provider at metapost.itcrossing.com.

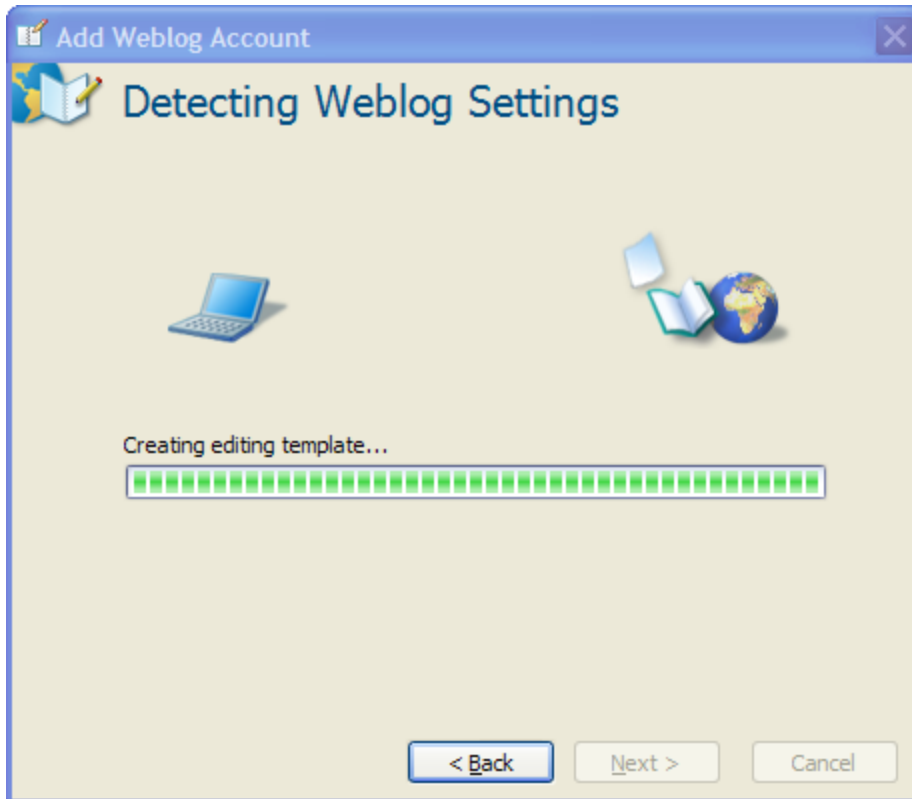


The full URL from this image is as follows:

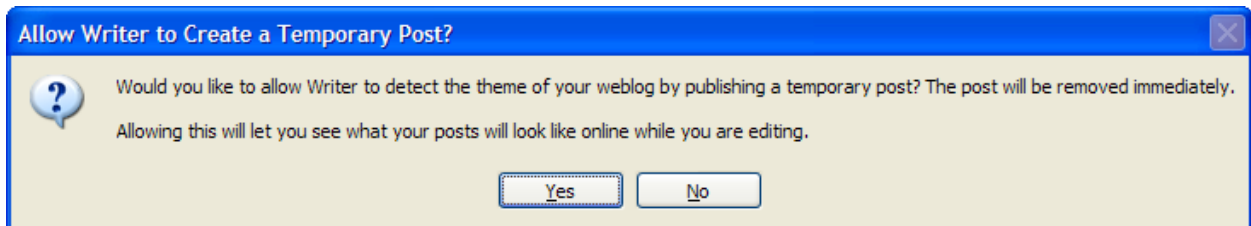
<http://metapost.itcrossing.com/metapost.ashx?key=faq>

Let's talk briefly about what each part means.

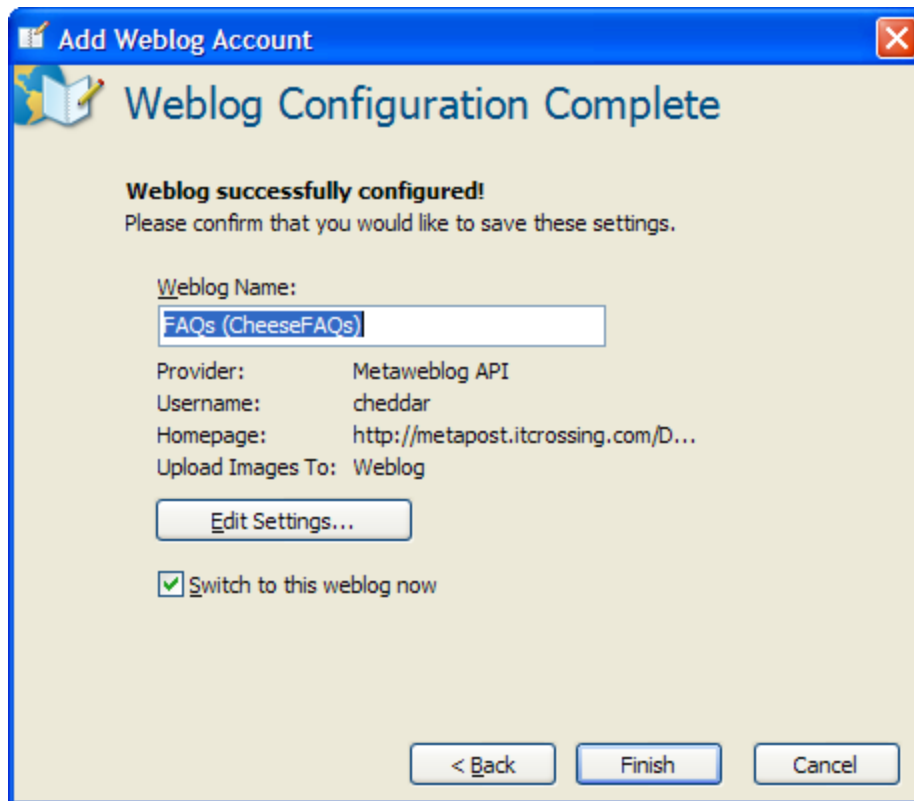
When you click Next, you'll see the following window for a few seconds while the information you entered is validated. Additionally, you may see a window appear asking you to choose a particular blog from a list of entries. This occurs when you are using a metaPost provider which supports multiple instances of the module in a portal.



After running for a few seconds, you will be prompted regarding whether you would like to allow Windows Live Writer to detect the theme of your site by creating a temporary post. metaPost supports this feature automatically for most providers. The FAQs provider is the only provider at the time of writing which requires manual steps to be completed before downloading the site styles. See the [online documentation](http://dnn.itcrossing.com/) for the FAQs provider at <http://dnn.itcrossing.com/> for more information.



Clicking yes will allow Windows Live Writer to download the site style which will enable you to hit F11 and write your post in a window which shows the actual look and feel of your site. When this process has completed, you will see one last screen where you are able to configure the name of the Windows Live Writer account.



Congratulations! You're ready to begin posting with Windows Live Writer!

Note:

The Weblog Name is configurable and you may edit this name later if you need to change it. Clicking Edit Settings is only necessary if you want to change one of the following options:

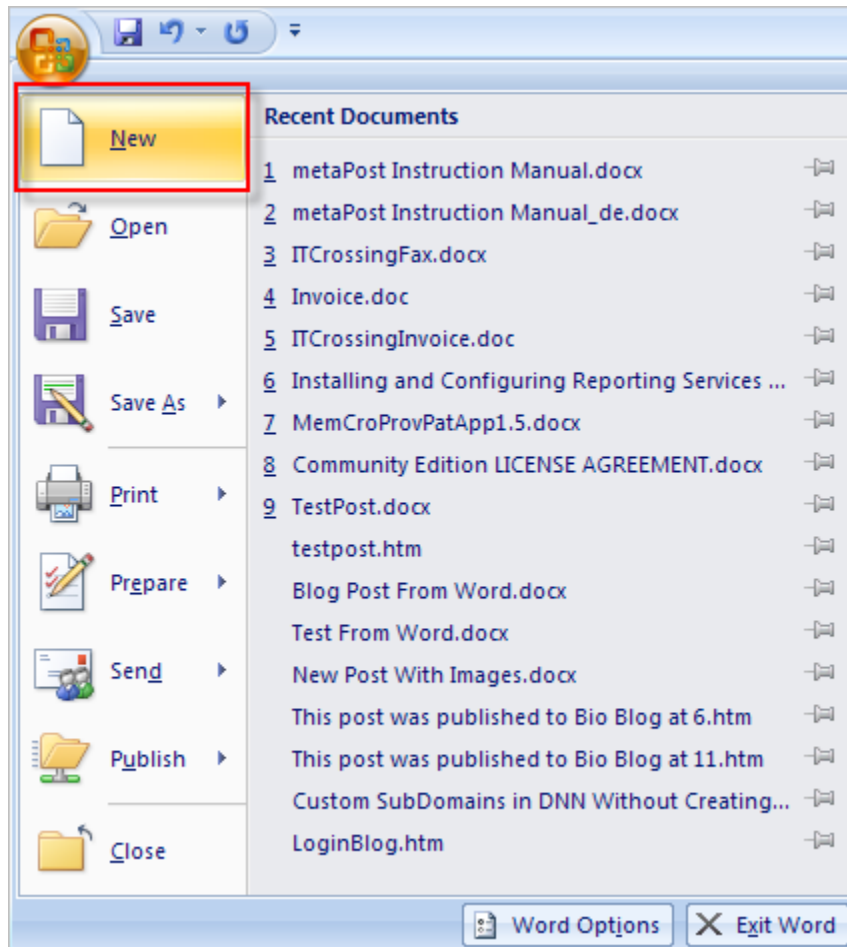
- How images are uploaded with your entries. The default is to let metaPost handle the image upload which will work best in most circumstances.
- Character Set – On the Advanced tab you are able to configure a character set other than the default UTF-8.
- Markup Type – the default is XHTML
- Blog Override settings for whether your blog supports scripts or embed tags (most commonly used for embedding video from Google Video or Youtube).

In most cases you should not have to change these settings. They are also easily configurable after the completion of the account configuration process.

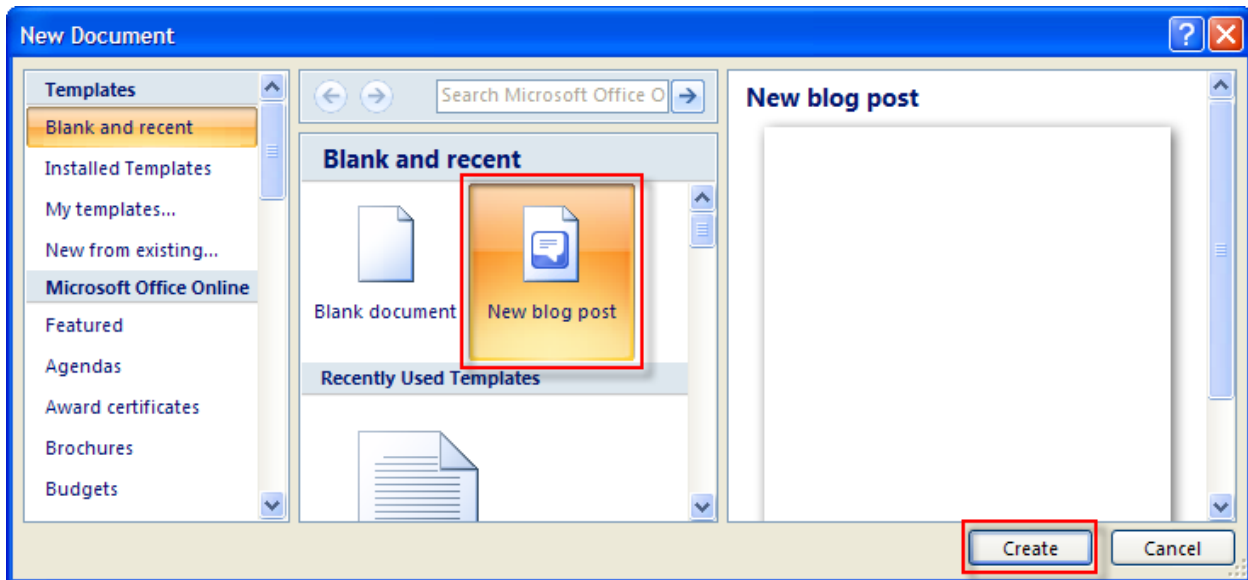
Microsoft Word 2007

While Microsoft Word 2007 is supported for basic posting operations, there are many features supported by Windows Live Writer which are not supported by Word 2007. One of the main reasons customers have used Word 2007 is the extended editing features available in Word such as SmartArt and WordArt. If advanced posting features, such as the ability to create and work with pages, then Windows Live Writer may be a better choice for an entry publishing client.

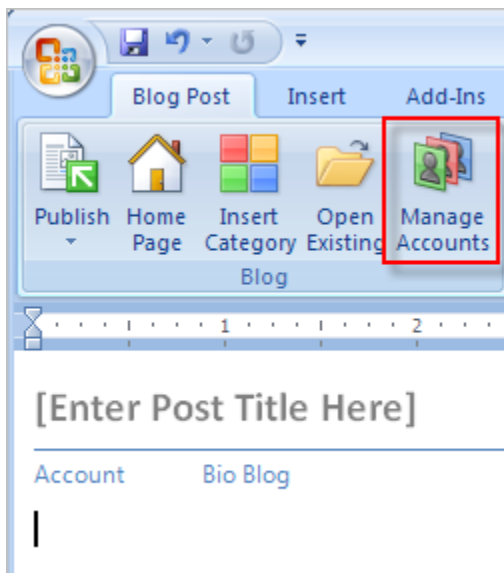
To configure Word 2007 to post to a DotNetNuke through a metaPost provider, open Word 2007 and select New from the Word menu as follows:



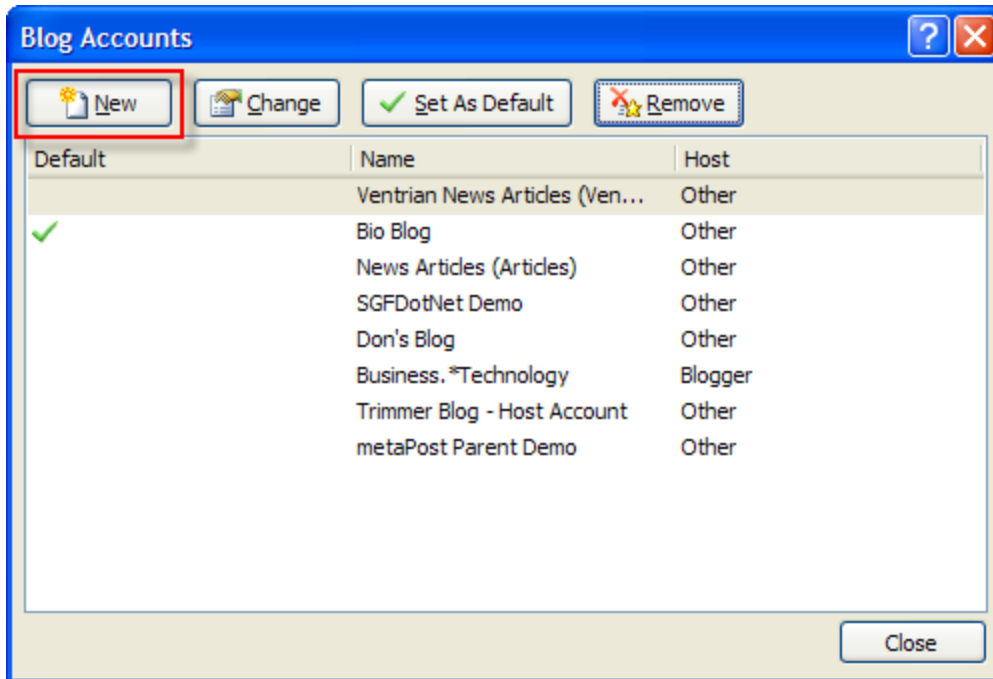
In the New Document dialog, click New blog post as follows:



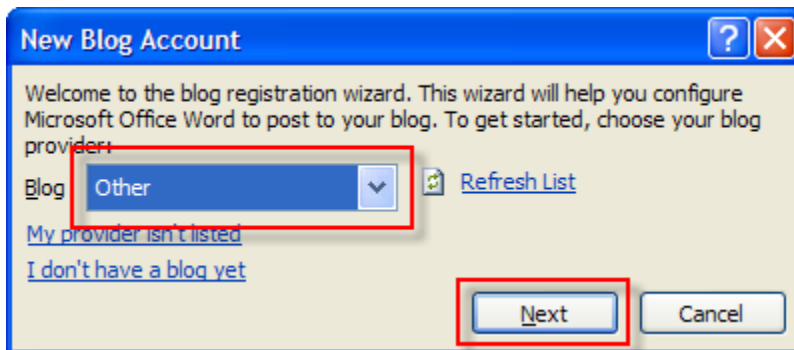
Your window should now look something like the following where your first step will be to click on the Manage Accounts button shown below:



In the Blog Accounts dialog, click New as follows:



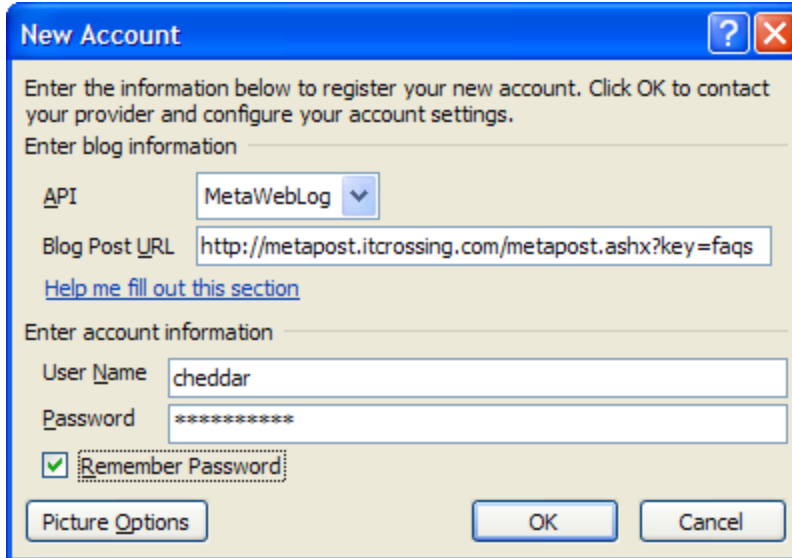
This will open the New Blog Account dialog where you can select Other as the Blog type and click Next as shown below:



Clicking the Next button will take you to the New Account dialog where you must:

- select the type of API you will use – MetaWebLog
- enter your blog post URL – See guidelines above for creating a Windows Live Writer account. The guidelines are the same for all clients.
- Enter the DotNetNuke username and password you will use to connect to your metaPost provider and publish content to DotNetNuke.

Optionally, you may also check the Remember Password option (Recommended) and configure custom image publishing options (only needed if you are required to publish your images using FTP).



New Account

Enter the information below to register your new account. Click OK to contact your provider and configure your account settings.

Enter blog information

API: MetaWebLog

Blog Post URL: http://metapost.itcrossing.com/metapost.ashx?key=faqs

[Help me fill out this section](#)

Enter account information

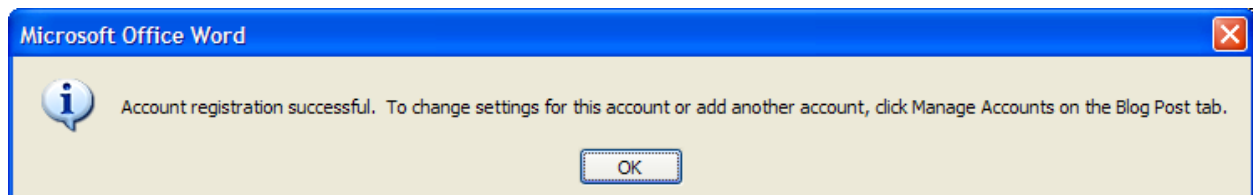
User Name: cheddar

Password: *****

☒ Remember Password

Picture Options OK Cancel

Clicking the OK button will complete the process. If there are no errors during account configuration, you'll see one last dialog which confirms that the account was created.



Clicking OK will take you back to the Blog Accounts dialog where you may add another account or click the Close button.

For information on how to work with content in Word 2007, see the section titled Working With Content in Word 2007 below.

Working With Content in Windows Live Writer

Adding Content

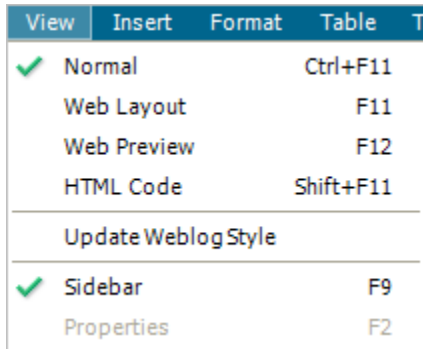
No tutorial is needed for adding content to Windows Live Writer since the interface is simple for creating a simple entry. Just add a title in the title region at the top and begin writing text in the region below the title. That was easy enough. However, there are some advanced features available in Windows Live Writer that can make adding content even more productive and a little more fun. We'll cover those now.

Editing Layouts

The default layout in Windows Live Writer does not show the styles of your site. What you see is something like the following:

Enter Post Title Here

If you chose to let Windows Live Writer download your site styles, then hit the F11 key or select the View menu to see the different editing options as follows:



Selecting F11 will change the editing layout so you are now able to view your post with the styles used in your site. In addition, the width of the region where your post will appear is also shown in Windows Live Writer, making it easier to know if tables or images will fit in the final content region. Hitting F11 for the Cheese FAQs provider created above changes the editing layout as follows:

Enter Post Title Here

I am now able to see what my final entry will look like as I write my post.

Additionally, I am able to hit F12 to see a read-only version of what the post will look like in my site as follows:

Thursday, February 21, 2008 |

HomeProductsServicesBlogCommunityContact UsVentrian News ArticlesCheese FAQs

Talk to Us!

Email:

Name:

Subject:

Cheese FAQs

FAQs

[How much time will you save?](#)

Answer:

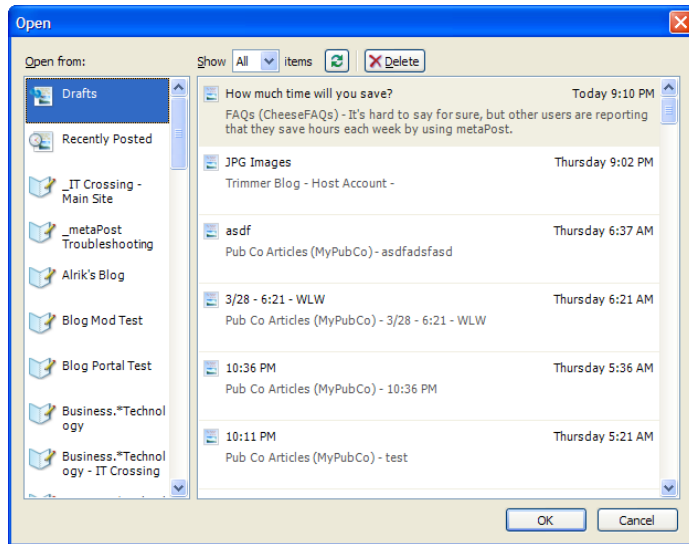
It's hard to say for sure, but other users are reporting that they save hours each week by using metaPost.

Windows Live Writer is using a cached version of the layout and styles from your site, so this feature is available even when you're working offline.

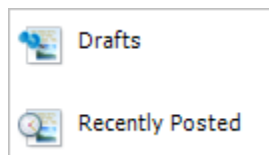
Finally, if you need to edit the HTML code, you can hit SHIFT F11 to see the HTML source for your entry.

Editing Existing Entries

With Windows Live Writer, you can easily edit existing content, either online or offline. To edit existing content, select the File | Open menu (CTRL + O) or click on the Open toolbar button. The following dialog will appear:

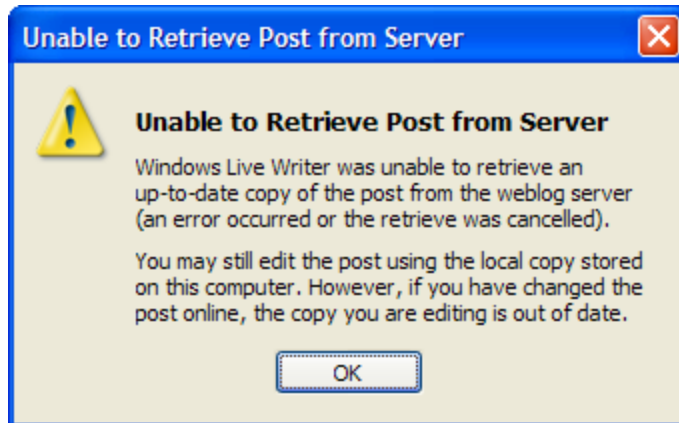


The dropdown on the left begins with two regions which you can use to access offline content: Drafts and Recently Posted.



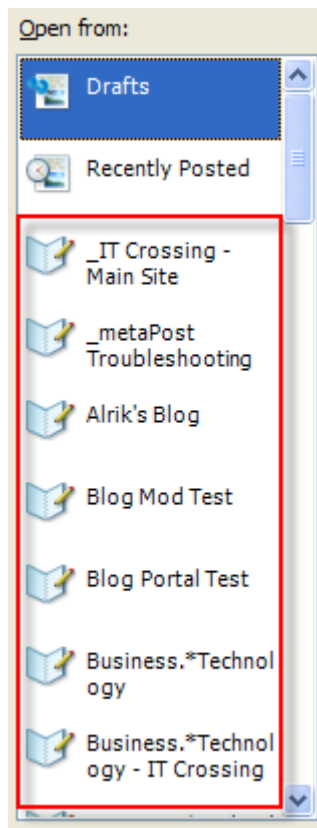
Clicking Drafts will show a list of the draft entries in the right hand side of the screen. These draft entries could be associated with any of your Windows Live Writer accounts, where an account is what you configured above during the installation process.

Clicking Recently Posted and selecting an item from the list of entries on the right while offline will cause the following dialog to appear:



This just lets you know that you're working with offline content. If you are online, when you select a Recently Posted item from the list of entries, Windows Live Writer will connect to metaPost and download the most recent version of your post from the server.

Below the Drafts and Recently Posted items is a list of the Windows Live Writer accounts you've configured.

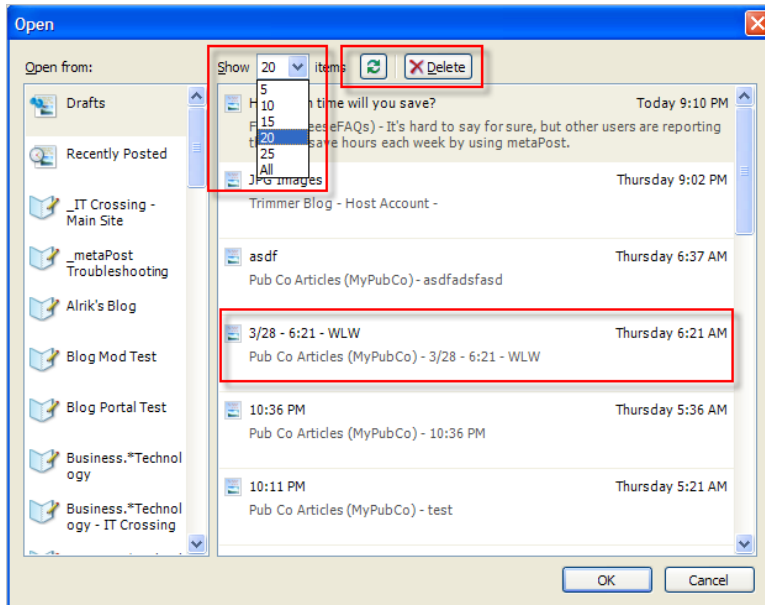


Note:

Many users will have several accounts configured for a couple of reasons:

- Each metaPost provider requires a separate account to be configured in Windows Live Writer.
- For some providers, such as the Ventrian News Articles provider, a separate account needs to be created for each instance of the News Articles module in a portal.
- In some cases multiple accounts can be configured so that different settings apply to the account or so that different DotNetNuke user accounts can be used to access site content.

When you select one of the accounts on the left, a list of the entries for that account will appear on the right as follows:



In this screen, we've highlighted three regions:

- The Show dropdown allows you to select the number of entries you want to retrieve from that account. For example, if you've selected the account for your Text/HTML module and you select 20 from the dropdown as shown above, this will list 20 of the Text/HTML modules that can be edited by the user account you used when you created your account.
- The Refresh and Delete buttons allow you to refresh your list and to delete selected entries respectively.
- The entries can be selected by clicking on them and clicking the OK button.

Note:

Some metaPost providers do not support the Delete feature listed in the Open dialog. The Text/HTML provider, for example, only supports editing existing entries at the time of writing.

Working with Summaries and Extended Entries

Windows Live Writer has support for both summaries and extended entries. Not all metaPost providers support these features, and some support these features differently. With Windows Live Writer, there are 3 main types of content that can be added:

- Text only summaries (Excerpt in Windows Live Writer)
- Main content region
- Extended content added below a split post marker

Text Only Summary

To add a text only summary, click on the double arrow found at the bottom right part of the content editor. It looks like this:



If you don't see this double arrow, then the provider you're using doesn't support the use of extended properties such as the text only summary. It may support the use of a split post which we will look at next. Here's a screen shot of the text only summary field available when using the metaPost Blog provider:

The screenshot shows the metaPost Blog provider interface. At the top, there are two dropdown menus: 'Set category' and 'Set publish date'. Below these are two more dropdown menus: 'Comments:' and 'Pings:'. The 'Excerpt:' field is highlighted with a red box. Below the 'Excerpt:' field is a text input field for 'Send Trackbacks to the following URLs (separate multiple URLs with commas):'.

Main Content

The main content region is the normal region for adding text.

Extended Content

The extended content is any content added after a split post marker. The split post marker is added by clicking Format | Split post (ALT + O + S). The marker appears as follows:



Any content added below this marker is considered extended content.

Note:

Some metaPost providers use the extended content for content by interpreting everything above the split post marker as the summary. This is the case with both the metaPost Blog module provider and the Ventrian News Articles module provider. This allows the user to enter a summary that uses HTML.

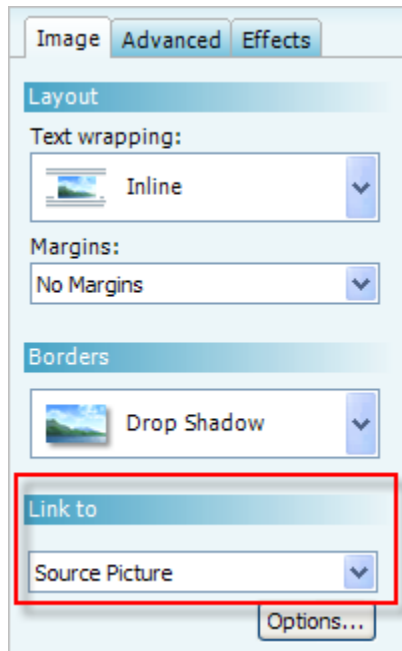
Auto Image Expander (Auto Gallery)

One of the most exciting reasons for using metaPost is the ability to work with images just like you would when using a word processor. You can drag and drop images from folders or use the Insert | Picture menu option (CTRL + L) to add an image from your hard drive. Using drag and drop is a great way to add multiple images. If you haven't already, why don't you open a quick test entry in Windows Live Writer and practice adding some images to your post.

Setting Image Properties

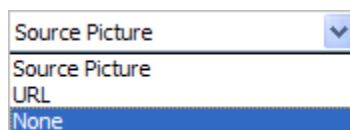
If you're using the Professional Edition of metaPost, then there is a built in image expander which adds a gallery effect to any images you add. This gallery effect depends on some of the settings applied to the images you add in Windows Live Writer, so let's talk briefly about the image settings.

By default, the image properties are configured as follows:



Notice that the Link to dropdown is set to Source Picture. This means that Windows Live Writer will actually publish two pictures: a thumbnail that Windows Live Writer creates automatically and a source picture which is resized according to the Options configured in the options button at the bottom of the screenshot above. If you want the image expander feature of metaPost professional Edition to handle the automatic expansion of the source picture, then leave this setting as is. If not, then select None from the Link to drop down as follows:

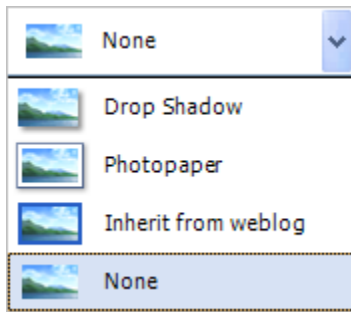
No expander effect:



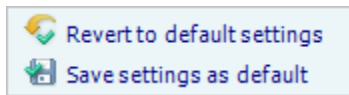
By default, Windows Live Writer will add a drop shadow to your images. If you do not want this added to your images, then remove the drop permanently as follows:

Remove drop shadow permanently

- Select an image
- Change the Borders option to None as follows



- Click the Save settings as default option found at the bottom right part of the screen.



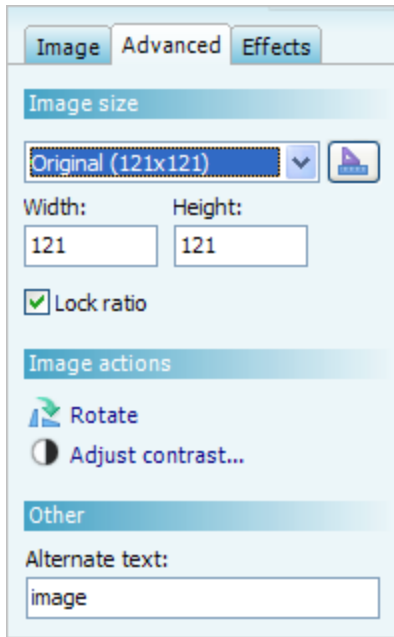
Note:

The Save settings as default option can be used to save any of the image options, including the size of the thumbnail that are created when you drop or insert images into Live Writer. This can be helpful if you're using the image expander (gallery) feature of metaPost Professional Edition. Drag and drop a single image into the page and set the properties you would like for all of your images, including the size of the thumbnail image, which you configure by simply resizing the image you can see in the editor. Additionally, you can configure the maximum size of the source file to be uploaded to the server by clicking on the Options button described above. When you've configured the image as you want it, click the Save settings as default and drag all of your images into your page. Windows Live Writer will automatically format all of the new images according to the settings you just saved.

You can see from the image properties window shown above that a number of other settings are available on this first tab including:

- Text Wrapping
- Margins

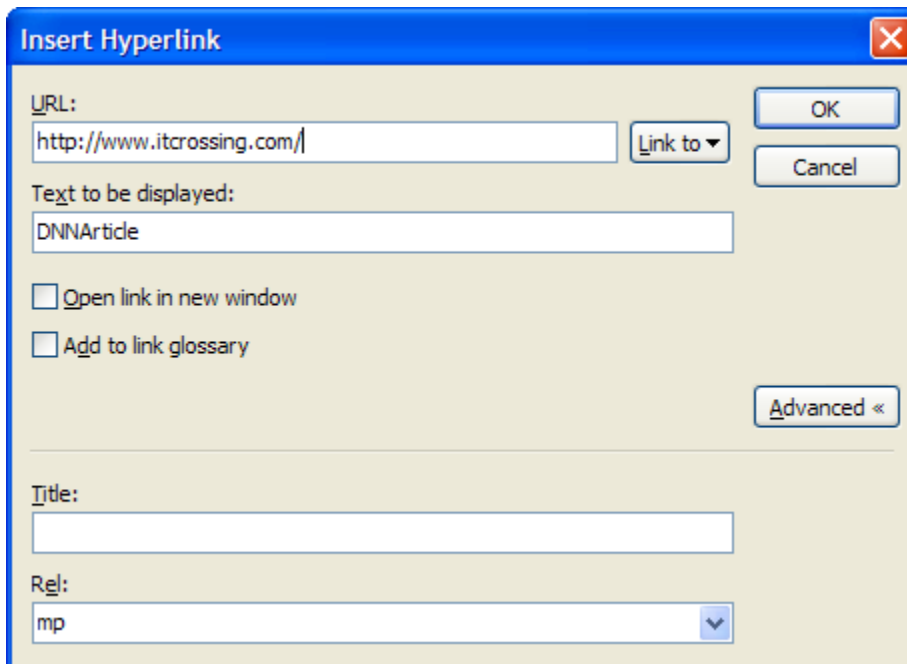
From the advanced tab of the image properties toolbar region, users are able to manage the size of the image as well as rotate, adjust the contrast and assign alternate text to the image as follows:



Finally, the Effects tab lists some basic effects which can be applied to your image.

Auto Link Expander

A feature added to metaPost Professional Edition in version 1.1.12 was the ability to easily add Web 2.0 styled URLs by simply setting the rel attribute of an image to mp as follows:

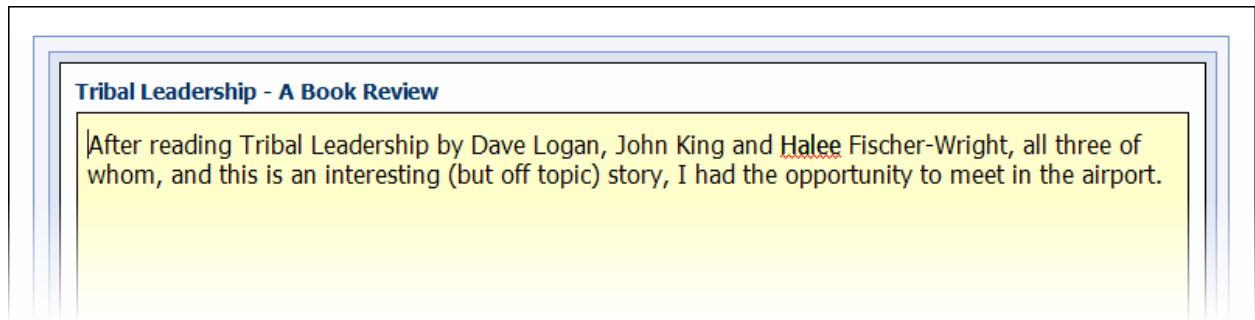


This will cause the link to appear in a Web 2.0 styled window with a default width and height of 1024x768. A custom height or width can also be specified. Below are examples of different ways height and width might be specified for the rel attribute:

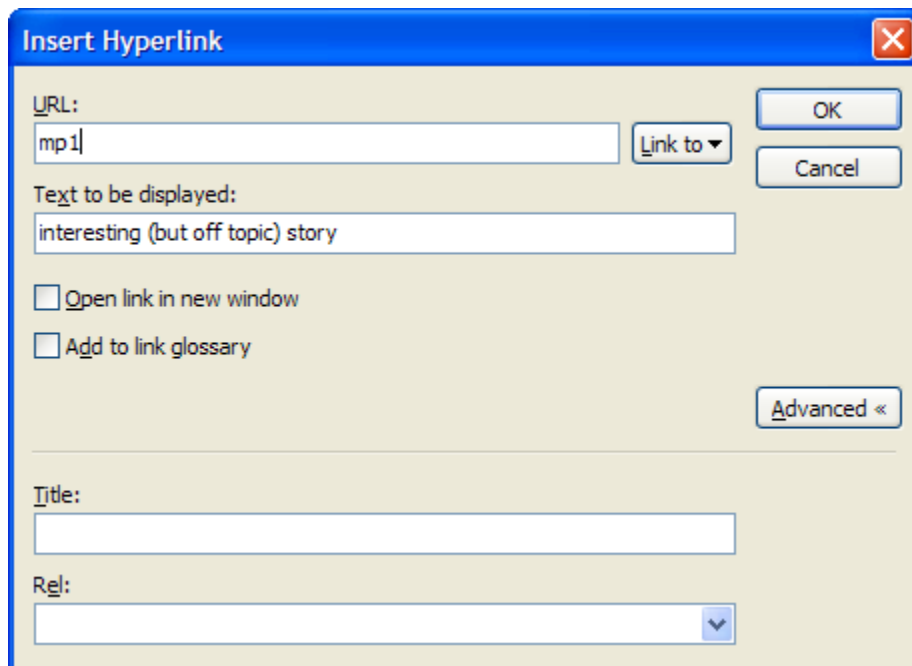
- mp,height:600,width:800
- mp,width:500

Auto Footnote Expander

A new feature added to metaPost Professional Edition 1.1.14 is the ability to add expandable footnotes to your entries. To show you how to use this feature, let's say I had the following entry started in Windows Live Writer:



As I begin to write this story, I realize that I would like to tell the story, but it's too off topic to include in the post. What I'll do is highlight a phrase that I want to use as a link to my side note and set the hyperlink properties as follows:



All I've done is enter mp1 as the URL.

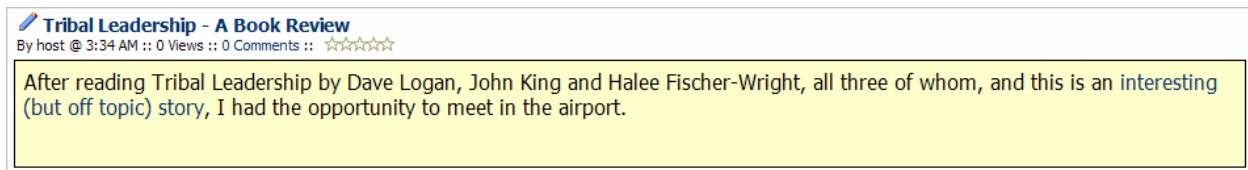
Next, I'll go to the bottom of my post and enter my side note as a footnote as follows:

After reading Tribal Leadership by Dave Logan, John King and Halex Fischer-Wright, all three of whom, and this is an interesting (but off topic) story, I had the opportunity to meet in the airport.

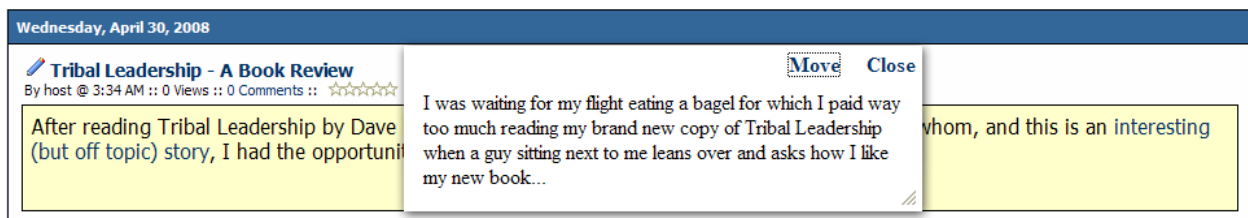
[mp1] I was waiting for my flight eating a bagel for which I paid way too much reading my brand new copy of Tribal Leadership when a guy sitting next to me leans over and asks how I like my new book...[/mp1]

Notice that I've added a footnote using the same token I used to create my hyperlink. You can add as many footnotes to an entry as you like and footnotes can contain any HTML. As you add more footnotes, simply increase the number you use for your footnote token. For example, my next footnote in this post would use mp2 as the token for my footnote. Footnotes can be nested as many levels deep as you would like and can contain other metaPost enabled, Web 2.0 styled content such as expandable links and images.

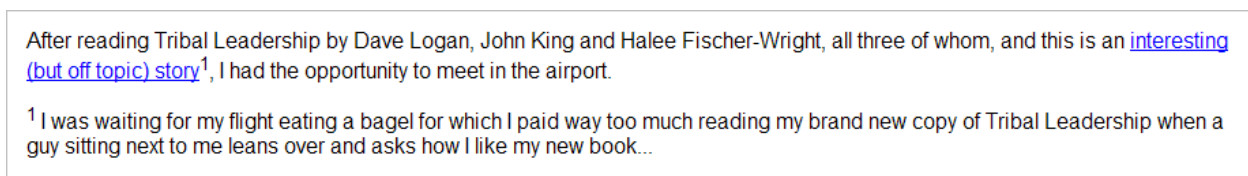
When this entry is published to the web, it will appear as follows:



And when a visitor to my page clicks on the link, they will see a Web 2.0 styled window appear with the contents of the side note I added to my entry as an auto-expanding footnote.



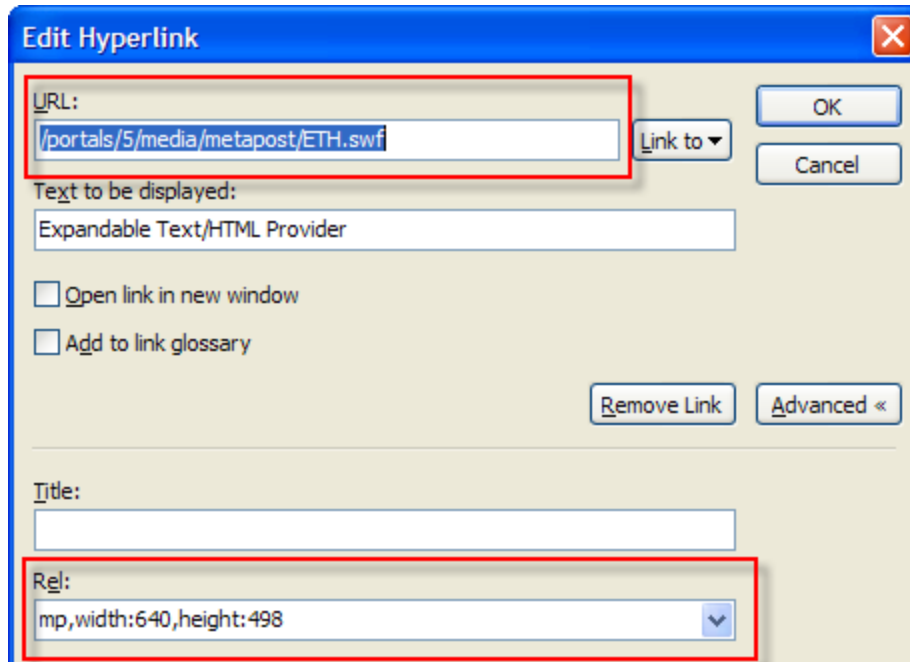
Additionally, when the entry is printed, the footnotes are printed along with the entry with superscripted footnote numbers added next to the links and next to each footnote entry.



Again, this feature is available in the Professional Edition of metaPost.

Auto Video Expander

Adding Flash videos to your site is easier than ever with the Professional Edition of metaPost. Simply add a link to your content in Windows Live Writer and set the URL to the swf file as follows:



Look up the width and height of your video and enter the width and height as follows in the rel attribute:

mp,width:nnn,height:mmm, where nnn is the width and mmm is the height of your video. When you publish your content, metaPost will replace this link with a video viewer which will show the video in an expandable, Web 2.0 styled window.

Auto Tabs

Auto tabs make it easy to add tabbed content to DotNetNuke as shown below.



The auto tab feature was added to metaPost Professional Edition 1.1.16 to make it fun and easy to add a tabbed interface to posts in any of the metaPost providers. The process of adding tabs to a post is easy. First, start by adding links for each of the tabs. These links can be separated by a space and should have the URL property set to tbn, where n represents the number of the tab.

To show this process, we'll add content in Windows Live Writer to show two tabs: one with a label that says, "Tabs are Fun", and another with a label which says, "Tabs are Easy Too!"

Start by typing the text for my first tab as follows:

How to Add Tabs

Tabs are Fun

Then select this text and hit CTRL + K on the keyboard to add a hyperlink.

Insert Hyperlink

URL:
 tb1

Link to

OK

Cancel

Text to be displayed:
 Tabs are Fun

☐ Open link in new window

☐ Add to link glossary

Advanced <<

Title:

Rel:

In the Insert Hyperlink dialog, simply set the URL property to tb1 for the first tab.

Next, you'll begin adding the content for the tab you've just entered. Simply add your content between a beginning and ending tab content tag as follows:

Tabs are Fun

[tb1]Rather than force your readers into a linear process, why not throw in a little dose of progressive disclosure and present your content through tabs. This puts the reader in control of your content and allows them to pick and chose the sections they are interested in reading based on the tab title. Your readers will love this neat little addition to your online content.[/tb1]

The key here is to begin your tab content with [tb1] and end it with [/tb1]. This will ensure that everything in between is shown with the first tab.

To add the next tab, simply add another link next to the first tab link you added. Your content should look as follows:

Tabs are Fun Tabs are Easy Too!

[tb1]Rather than force your readers into a linear process, why not throw in a little dose of progressive disclosure and present your content through tabs. This puts the reader in control of your content and allows them to pick and chose the sections they are interested in reading based on the tab title. Your readers will love this neat little addition to your online content.[/tb1]

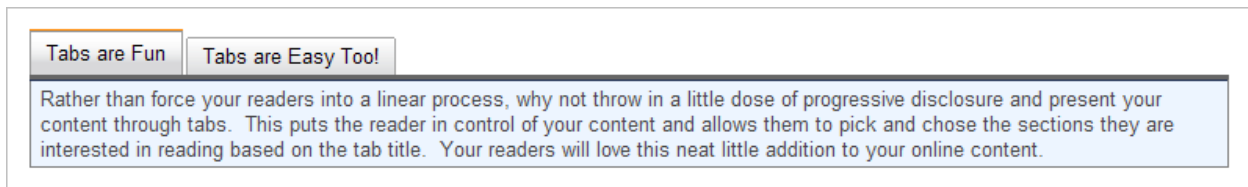
Finally, add the content for tab 2 in a region surrounded by beginning and closing tags ([tb2] and [/tb2]) as follows:

Tabs are Fun Tabs are Easy Too!

[tb1]Rather than force your readers into a linear process, why not throw in a little dose of progressive disclosure and present your content through tabs. This puts the reader in control of your content and allows them to pick and chose the sections they are interested in reading based on the tab title. Your readers will love this neat little addition to your online content.[/tb1]

[tb2]Once you get the hang of it, you'll find that adding tabbed content is easier than ever. Fun and easy, what else would we need? Well, you may want all of your content to print when your entry is printed and we've thought of that too! The release version of the auto tab feature will allow tabbed content to be printed in the order of the tabs. Fun, easy and functional![/tb2]

When you publish this content, the final online version will look something like this:



The tab interface is implemented using the YUI controls available from Yahoo, so skinning your tabs is easy, just following the skinning documentation available from Yahoo and add your classes to one of the following CSS files used by DotNetNuke: portal, skin or container. The Yahoo skinning document can be found here:

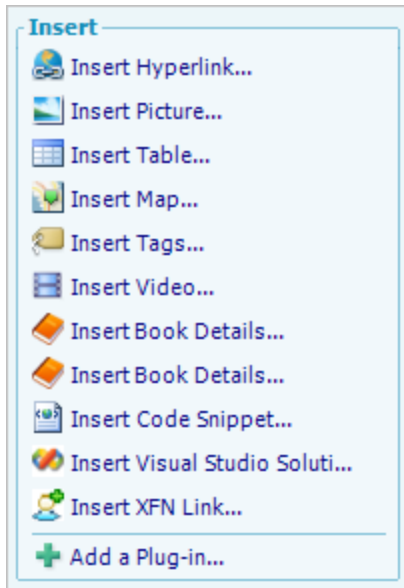
<http://developer.yahoo.com/yui/examples/tabview/skinning.html>

The YUI controls are released under the same BSD license as DotNetNuke, so the controls are available for any use including in commercial sites.

Windows Live Writer Plug-ins

Another great way to manage content through Windows Live Writer is through the growing list of Plug-ins created to extend the features of Windows Live Writer and make it easier to add content like embedded videos and other resources that blog writers may want to share.

Adding a plug-in is easy. You'll just click the Add a Plug-in button at the bottom of the Insert section of the toolbox on the right. If you don't see this region, the most common reason is that you have an image selected in your content.

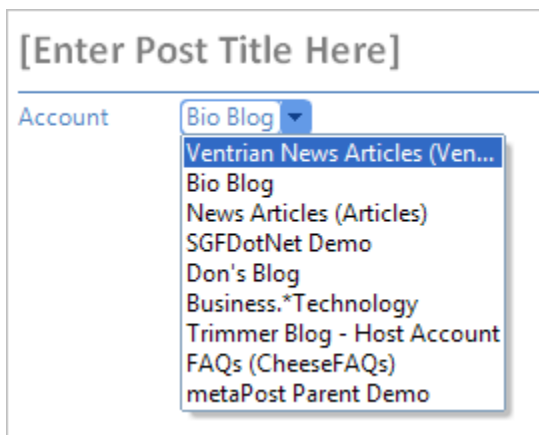


Some useful resources for finding Windows Live Writer plug-ins are as follows:

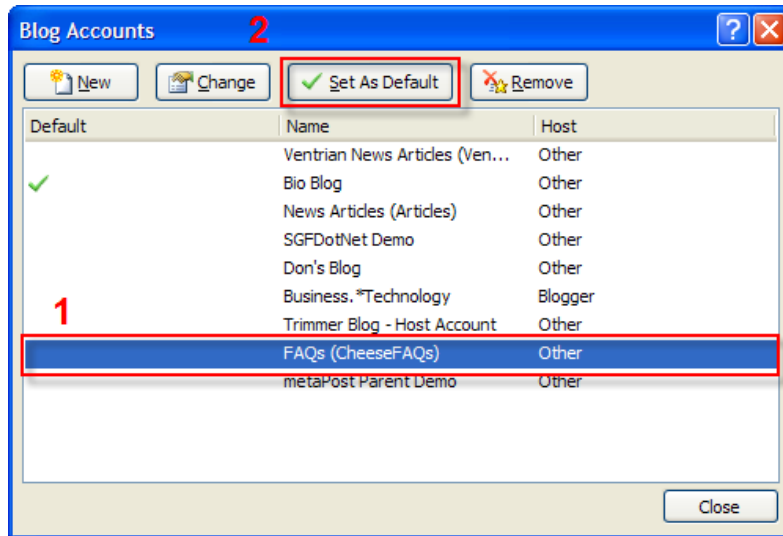
- <http://wlwplugins.com/>
- <http://www.codeplex.com/WLWPlugins>

Working with Content in Word 2007

Once an account has been created, you'll need to make sure you select the right account before you publish content from Word. To select the right account, you will click the Account dropdown as shown below.



To set the default account, simply click the Manage Accounts button on the toolbar and in the Blog Accounts dialog, select an account and click the Set as Default button as shown below:

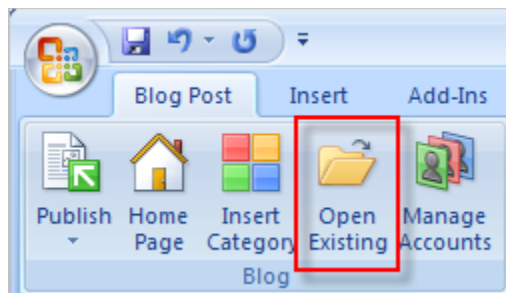


Adding Content

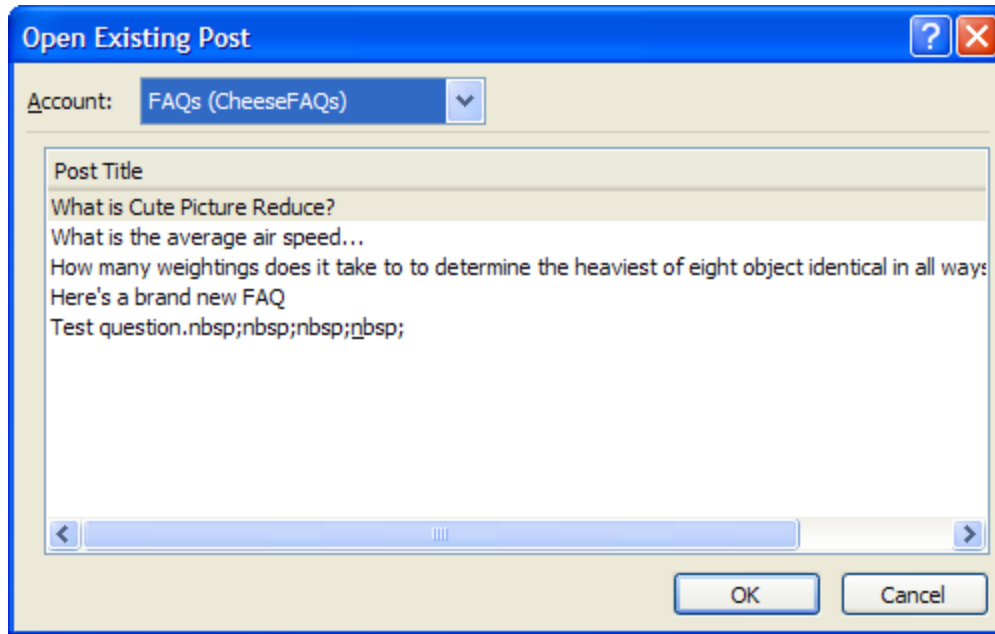
Add content into the region below the Account dropdown as you would normally add content in a Word document. Unlike Windows Live Writer, there is no way to view the HTML as you write your post.

Editing Existing Entries

Edit an existing entry by clicking on the Open Existing button on the toolbar as follows:



Word will contact the provider for the currently active account (See the Account dropdown) and show a list of entries available from the provider as follows:



Notice that you can switch the account in this dialog to see entries from another account. To edit an existing entry, select an entry from the list and click the OK button.

Working with Summaries and Extended Entries

Word 2007 does not support the ability to add either summaries or extended entries. If these features are essential for the metaPost provider you are using to publish content to a DotNetNuke module, you will need to use Windows Live Writer as your publishing client. Some customers will create their content in Word 2007 and publish the content through Windows Live Writer.

Working with Images

Images are also handled differently in Word 2007 than they are in Windows Live Writer. In Word 2007, images are supported through copy and paste, the through toolbar and also through drag and drop. However, Word 2007 does not automatically create a thumbnail for images added to your page. If you or your content providers require an auto-thumbnail feature, it is suggested that you use Windows Live Writer.

Providers

Each of the metaPost providers supports a different set of features depending on the feature set of the individual module. For example, the Ventrian News Articles module has support for associating multiple pages with an article, so the metaPost provider provides support for the built-in features of Windows Live Writer for creating pages and assigning these pages to a parent article. The sections below cover the unique aspects of the installation and usage of the provider.

DNN Blog Module Provider

Installation

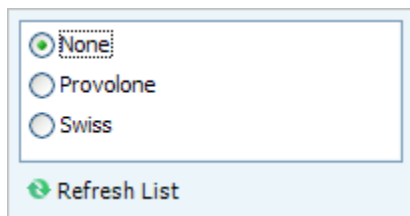
The publishing URL for creating a Windows Live Writer account for the blog module provider at metaPost.itcrossing.com is as follows:

<http://metapost.itcrossing.com/metapost.ashx?key=blog>

Unique Features

The following unique features are available with the blog module provider:

- **Child Blogs** - Support for selecting a child blog using the categories interface. Selecting None will cause the post to be associated with the parent blog, while selecting a child blog, such as Provolone as seen in the image below, will cause the post to be associated with that child blog.



This interface is available after clicking the Set category dropdown seen in the image below.

- **Custom Publish Dates** – Clicking the Set publish date allows a user to select a future publish date. The blog entry will not be visible until the date selected.
- **Comments Policy** – The comments dropdown allows a user to specify whether they want to support comments for the post.
- **Pings** – Selecting Allow will enable the auto ping/trackback feature of metaPost to scan the post for URLs and check to see if any of these URLs point to resources which support the pingback or trackback specifications.
- **Text Summary** – The excerpt field allows a text only summary to be entered for the blog post.

- **Trackback URLs** – If there are specific Trackback URLs for resources that support Trackback, but don't support auto Trackback, you are able to place the Trackback URL in the Send Trackbacks textbox. Multiple URLs should be separated by commas.
- **HTML Summary** – If an HTML summary is desired, a user may use the Split Post feature available from the Format menu (CTRL + O + S). The region above the split post will be used as the summary and the extended region below the split post (the More line shown below) will be used as the content of the post.



Ventrian News Articles Provider

Installation

The publishing URL for creating a Windows Live Writer account for the News Articles provider at metaPost.itcrossing.com is as follows:

[http://metapost.itcrossing.com/metapost.ashx?key=news articles](http://metapost.itcrossing.com/metapost.ashx?key=news%20articles)

Unique Features

The Ventrian News Articles module provider contains a variety of unique features such as:

- **Custom Publish Dates** – Clicking the Set publish date allows a user to select a future publish date. The blog entry will not be visible until the date selected.
- **Text Summary** – The excerpt field allows a text only summary to be entered for the blog post.
- **HTML Summary** – If an HTML summary is desired, a user may use the Split Post feature available from the Format menu (CTRL + O + S). The region above the split post will be used as the summary and the extended region below the split post (the More line shown below) will be used as the content of the post.



- **Summary Only** – If no summary or extended content is added, then the content is added into the summary field. This allows content providers who use the News Articles module as a blog to easily post entries to the News Articles module.
- **Add Pages** – There is full support in the News Articles module for adding pages. Pages can be retrieved, added, edited, deleted, assigned to different parents and the page order can be modified all from within Windows Live Writer.
- **Featured and Secure** – These custom News Articles options can be set right from within Windows Live Writer using a custom section in the categories dropdown.

- **Date as Expiration** – Users are able to specify that the publication date should be used as the expiration date for the article. This option appears along with the Featured and Secure options in the categories dropdown.
- **Draft or For Approval** – For content providers who do not have approval privileges, publishing the article using the publish command in Windows Live Writer will submit the article for approval. Submitting as a draft will submit the article as a draft. Submitting as a draft allows the content provider to continue to edit the article, whereas submitting for approval (Publish in Windows Live Writer) leaves that article in a state where it can no longer be edited by the content provider.
- **Auto Approval for Approvers** – Any user in the approver role in News Articles can submit articles to the site without waiting for approval.

DNN FAQs Module Provider

Installation

The publishing URL for creating a Windows Live Writer account for the FAQs module provider at metaPost.itcrossing.com is as follows:

<http://metapost.itcrossing.com/metapost.ashx?key=faqs>

The FAQ provider is the only provider which doesn't support the automatic downloading of the site styles and template. The FAQ module doesn't show the answer until the user selects the question, so Windows Live Writer isn't able to "see" it's test post. There is a workaround, though.

Add the following to the end of the Question Template in the FAQ settings before you configure your FAQ account in Windows Live Writer. This will cause the FAQ module to temporarily show the answer in the page.

```
</a><div Class="Normal" Style="padding: 5px;"><b>Answer:</b> [ANSWER]</div><a href="tempstyle">
```

After you've created the WLW account, just remove the HTML you added. Also be sure to set the cache to 0 before pointing WLW to the FAQ module.

Unique Features

The following unique features are available for the FAQs module provider:

- **Categories** – The FAQs module allows the assignment of one category to a Question and Answer pair.
- **Question** – The title is used as the question.
- **Answer** – the content from the main content region is used for the answer.

DNN Text/HTML Module Provider

Installation

The publishing URL for creating a Windows Live Writer account for the Text/HTML module provider at metaPost.itcrossing.com is as follows:

<http://metapost.itcrossing.com/metapost.ashx?key=text/html&sid=701>

where sid stands for style id and the style id represents the module id of a Text/HTML module that you've temporarily added to the site for style detection. When you add this module to the site, make sure the user account you will use to create your Windows Live Writer account has edit access to the page. Additionally, make sure the caching is set to 0 in the module properties. The easiest way to find the module id that you will use for the sid is to access the settings for the module and retrieve the module id from the URL.

Unique Features

The following unique features are available for the Text/HTML module provider:

- **Desktop Summary** – Adding a summary through Windows Live Writer's Excerpt field available at the bottom of the content window when the double arrow is clicked to expand the extended features will cause the summary to be added as the Desktop Summary. Similar to the blog module, the summary can also be added using the split post feature, thereby enabling the entry of a summary with HTML text.
- **Date and Categories** – While the custom publish date and categories appear in this same region, these two features are not implemented in the current version of the provider.

ZLDNN DNNArticle Provider

Installation

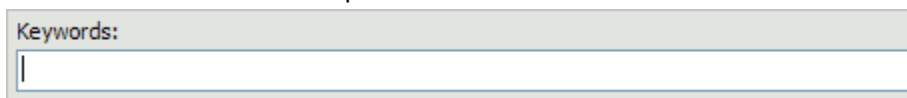
The publishing URL for creating a Windows Live Writer account for the DNNArticle module provider at metaPost.itcrossing.com is as follows:

<http://metapost.itcrossing.com/metapost.ashx?key=dnnarticle>

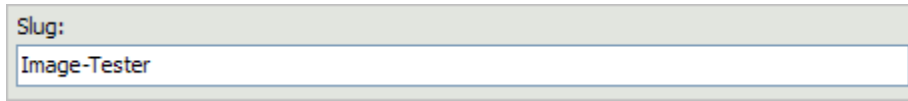
Unique Features

The following unique features are available for the DNNArticle module provider:

- **HTML Summary** – Articles can be created with an HTML summary using the Split Post feature available from the Format menu.
- **Keywords** – A comma separated list of SEO keywords can be associated with a post using the keywords interface in Windows Live Writer. This option is available from the expandable section at the bottom of the post as follows:



- **SEO Title (Slug)** – An SEO title can be entered in the expandable section at the bottom of the post. The text entered for the Slug will appear as the Title of the page in the browser's title bar.



Portalfabrik Magic Content Provider

Installation

The publishing URL for creating a Windows Live Writer account for the Magic Content module provider at metaPost.itcrossing.com is as follows:

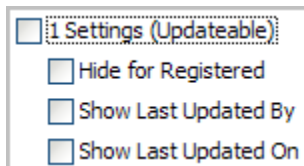
<http://metapost.itcrossing.com/metapost.ashx?key=magic content&sid=nnn>

Where nnn represents the moduleId of the Magic Content module used for style detection. We recommend adding a new module to a page and adding sample text to this module before using it for style detection when creating an account with Windows Live Writer.

Unique Features

The following unique features are available for the Magic Content metaPost provider:

- **Module Settings** –The following settings specific to the Magic Content module can be set from within Windows Live Writer:



- **Multiple Locale Content** – Magic Content excels at showing content for multiple locales. In order to edit content for multiple locales, more than one language pack needs to be installed. With more than one language pack installed, the Magic Content provider shows the locale of the content being edited using custom categories. These settings are read only and are meant only to show the locale of the content being edited. See the diagram below. Also, see note below regarding how to select the role and locale version of the content you wish to edit.
- **Multiple Role Content** – Magic Content is also able to show distinct content for specific roles. Again, this has to be configured using the web interface first, but once configured, the Magic Content metaPost provider allows an editor to edit the content for each role. Similar to the locale, the role is shown using a section within the categories interface which is read only.

☐ 1 Settings (Updateable)

☐ Hide for Registered
 ☐ Show Last Updated By
 ☐ Show Last Updated On

☐ 2 Locale (Read Only)

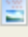



☐ de-DE
 ☐ en-US

☐ 3 Role (Read Only)

☐ *All Visitors*
 ☐ Administrators
 ☐ Article Approvers
 ☐ Article Authors
 ☐ mp_na_editor
 ☐ Registered Users
 ☐ Subscribers

Note:

Content editors are able to see the locale and role associated with the content they are editing in the list of content retrieved. In Windows Live Writer, clicking the Open button on the toolbar will show a list similar to the following:

 en-US - Article Approvers - Magic Content Page 1	Thursday 5:08 PM
Magic Content Page 1	
 de-DE - Article Approvers - Magic Content Seite 1	Thursday 5:08 PM
Magic Content Seite 1	
 en-US - *All Visitors* - Magic Content Page 1	Friday 7:53 AM
Magic Content Page 1	
 de-DE - *All Visitors* - Magic Content Seite 1	Friday 8:35 AM
Magic Content Seite 1	

Additional Resources

We are so very pleased that you are interested in using metaPost and hope that your use of the product saves you time and is fun to use! In order to ensure that metaPost is a success, we have the following resources available online for your reference and for support.

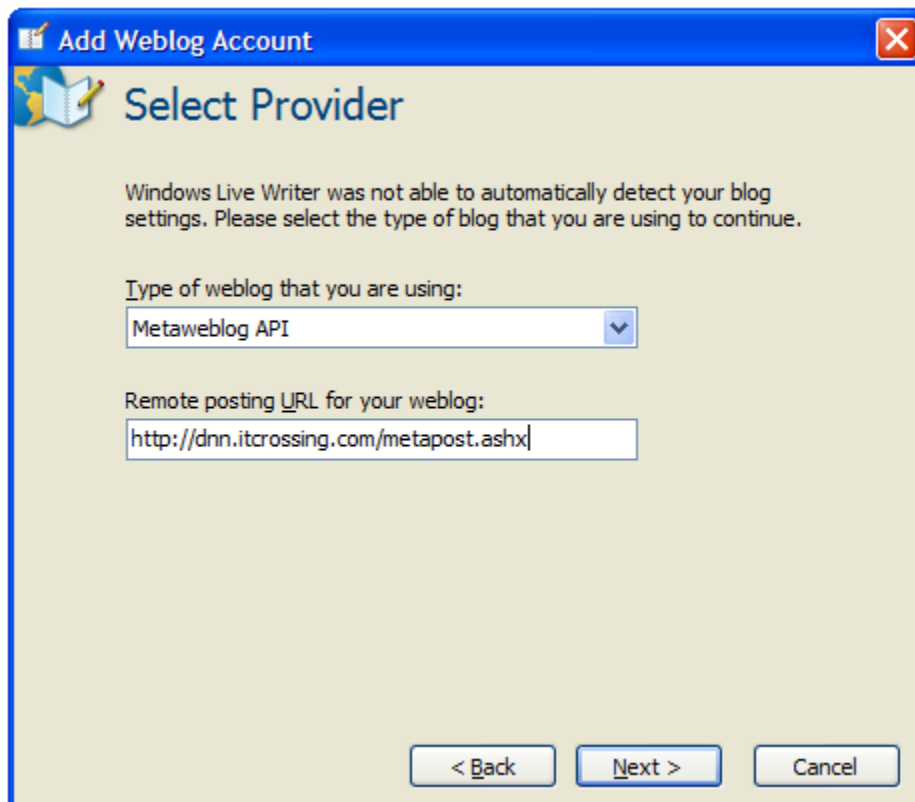
- Online Forums - <http://dnn.itcrossing.com/Support/tabid/192/Default.aspx>
- Product Page - <http://dnn.itcrossing.com/Products/Modules/metaPost/tabid/195/Default.aspx>
- Troubleshooting - <http://dnn.itcrossing.com/Products/Modules/metaPost/Troubleshooting/tabid/256/t.aspx>

Troubleshooting

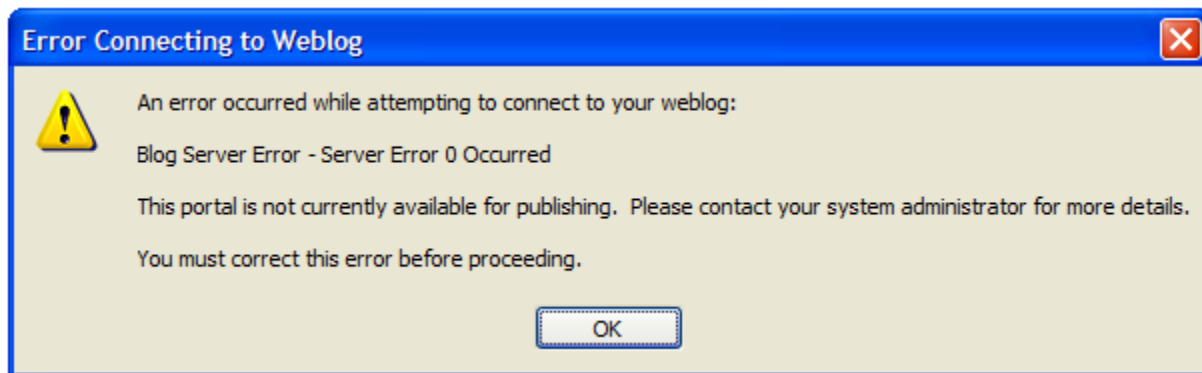
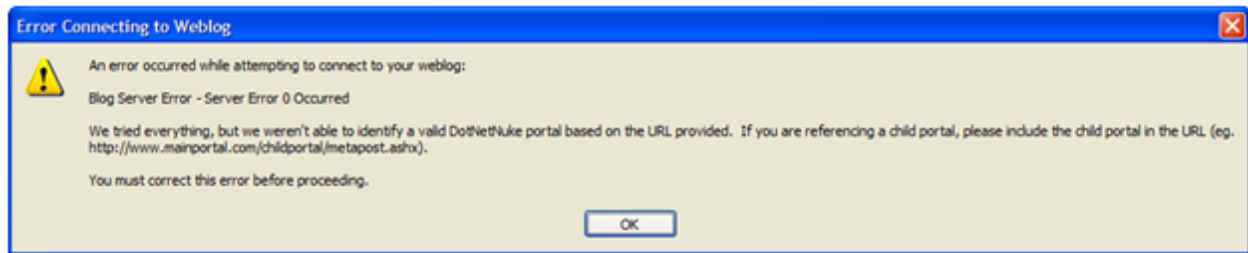
Argh! I've installed metaPost and it's not working! If that's you, then we hope we can get you past any hurdles you're facing by covering some common problems that occur when installing metaPost. We also want to encourage you to contact us by using either the forums or by contacting us directly (See the Contact Us page at <http://www.itcrossing.com>).

An Error 0 message appears when I try to create my first account

If you get one to the following screen in the account configuration process in Windows Live Writer



and you see one of the following 2 error messages, then there are a couple of items you can check (listed below).



Potential Fixes

- Check to make sure the portal alias entered matches a portal alias listed in the site settings for your portal.
- If you are using a child portal or if you have installed an instance of DotNetNuke in a virtual directory, make sure you're using a URL in the following form: http://www.portaldomain.com/childportal or virtual_dir/metapost.ashx where you would substitute the actual name of your portaldomain as well as the actual name of your child portal or virtual directory.
- Check to make sure there is an entry in the Friendly Url Settings in Host Settings. It should appear as follows:



- If there is not an entry in Host Settings, then this may be due to a permissions issue on the SiteUrls.config file at the root of your DotNetNuke folder. Check to make sure that the appropriate account has write access to this file. If the ASPNET or NetworkService (or possibly some custom account if you're working with a hosted site) did not have access the SiteUrls.config file, then grant the appropriate permissions and then uninstall and reinstall metaPost.

- Alternately, you can manually add the entry to the Friendly Url Settings. To do this, add the following:

Match: (.*)/metapost.ashx

Replace With: ~/metapost.ashx?calias=\$1

- If this doesn't solve the problem, please be sure to contact us to let us know that you're having trouble. Our team is more than willing to help you troubleshoot any issues you might be having with metaPost.

The styles aren't picked up by Windows Live Writer for the Text/HTML module

In the current version of metaPost, the styles can only be picked up by adding a style id (sid) parameter to the posting URL you use when you create your Windows Live Writer account. An example URL would be as follows:

<http://metapost.itcrossing.com/metapost.ashx?key=text/html&sid=701>

The sid parameter should be set to the Module ID for a Text/HTML module on the home page. The key to getting this to work is that Windows Live Writer needs to be able to edit the content in this module and see the edit after the changes have been made. There are a few things that can cause problems:

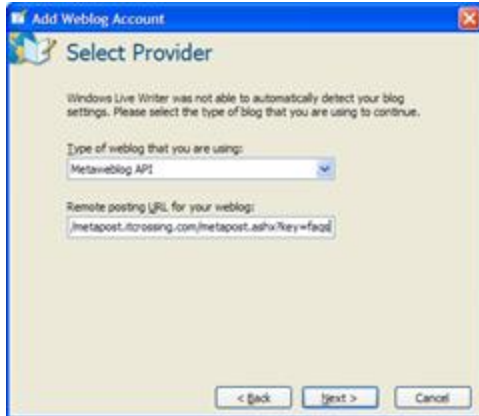
- The caching property for the Text/HTML module needs to be set to 0.
- The user used to create the account in Windows Live Writer needs to have edit access to the module either directly or through membership in a role which has edit access.
- The Text/HTML module needs to have a container.

The recommended way to pick up the styles for the Text/HTML module is to add a new Text/HTML module to the home page of your portal and configure the module as noted above.

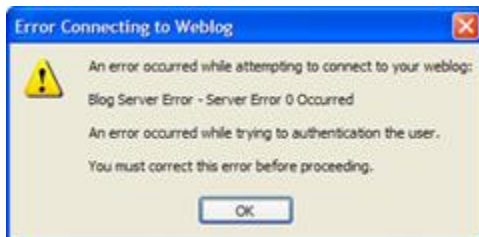
If this doesn't solve your problem, please contact us so we are aware of the problem. Our staff are more than happy to help get metaPost running smoothly in your environment.

An error occurred while trying to authenticate the user

If you get to the screen in the account setup process where you're entering your remote posting URL as follows:



and you receive an error message like the following:



Then click the Back button and check to make sure that you have entered the correct password for the username you are using to configure your new Windows Live Writer account. This username and password should match a valid DotNetNuke username and password with the appropriate rights to edit the module associated with the metaPost provider you are using.

I've added the metaPost Module to a page, but I can't see it

The metaPost admin module is designed to only be visible for superuser accounts such as the host account. This is due to the fact that the current settings available in the module are host level settings. We've received some great feedback from the community regarding this limitation, so this may change in a future release.