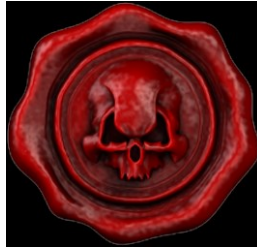


SIMS Bulk Import Guide

<http://simsbulkimport.codeplex.com/>



The SIMS Bulk Import tool is a freeware tool designed by Matt Smith, it allows the bulk import from a wide range of file formats including .txt, .csv, .xml and .xls directly into the Capita SIMS .net MIS system. It uses the SIMS Business Objects to achieve these wish means it should be “safe” to use in the live environment without invalidating support agreements with Capita.

It does not come with any guarantees or warranties and support is on a “honour” bases. It is therefore recommend that SIMS Support Teams test the product before recommending it to schools they support. For example you understand that you could import the same email address for every pupil, staff and contact record in SIMS .net – assuming you foolish enough to create a file with the same email address for every person and then try and import it.

The application is not designed to generate data, only import existing data from another system that has been exported. For example, you have exported a list of users and their email addresses from Google Apps and you want to import that data into SIMS .net.

Content

- Licensing..... 2
- Support 3
- Requirements 4
- Installing..... 5
- Getting Started..... 9
- FAQs 14

Licensing

SIMS Bulk Import is licensed under the Microsoft Reciprocal License (Ms-RL). For more information please visit: <http://simsbulkimport.codeplex.com/license>

Previous licensing restrictions have been removed and you no longer require a (free) license key

Support

In the unfortunate event that you have a problem we recommend that you check that you are running the latest **stable** release by visiting the site - <http://www.edugeek.net/forums/sims-bulk-import/>

Problems can be raised via CodePlex by visiting <http://simsbulkimport.codeplex.com/workitem/list/basic>. You are required to register on CodePlex in order to log an issue. You are able to logon with a CodePlex account or use your Microsoft Account which you can use on other Microsoft sites such as Licensing and Outlook.

Under no circumstances should any personal data be published. Please ensure any log files are free of any data. SIMS Bulk Import tool should not log such information however it should still be inspected before transmission to a third party. It is highly recommended that DfE code and any other similar data is also removed to give the user anonymity.

A dedicated forum has also been setup on [Edugeek](http://www.edugeek.net) which under Forums > EduGeek Projects > Projects > SIMS Bulk Import - <http://www.edugeek.net/forums/sims-bulk-import/>

Requirements

You require administrator rights in order to install the application. You also require administrator rights to change parameters such as the license key via the application.

You are required to have the SIMS .net client installed and working. This is because it uses Capita SIMS Business Objects

Microsoft .NET Framework 4.0 (Full)

10MB free hard disc space

Installing

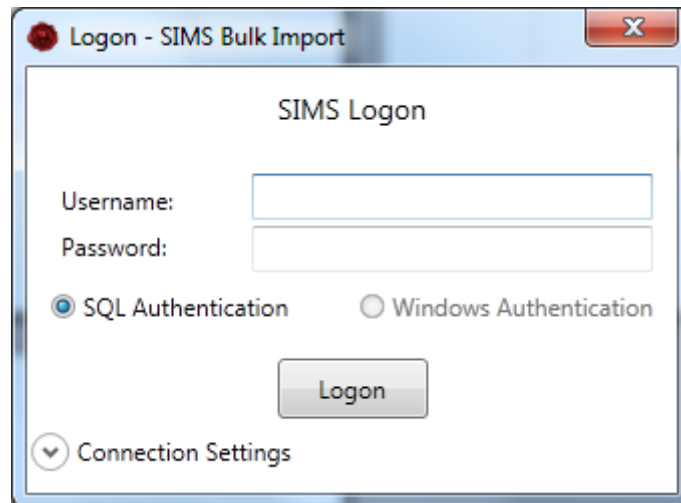
Download the latest tool from: <http://simsbulkimport.codeplex.com/>

Getting Started

Once you have entered your license, you can then actually import data into SIMS .net.

To get started lets import something into Pupils - **File > New > Pupil**

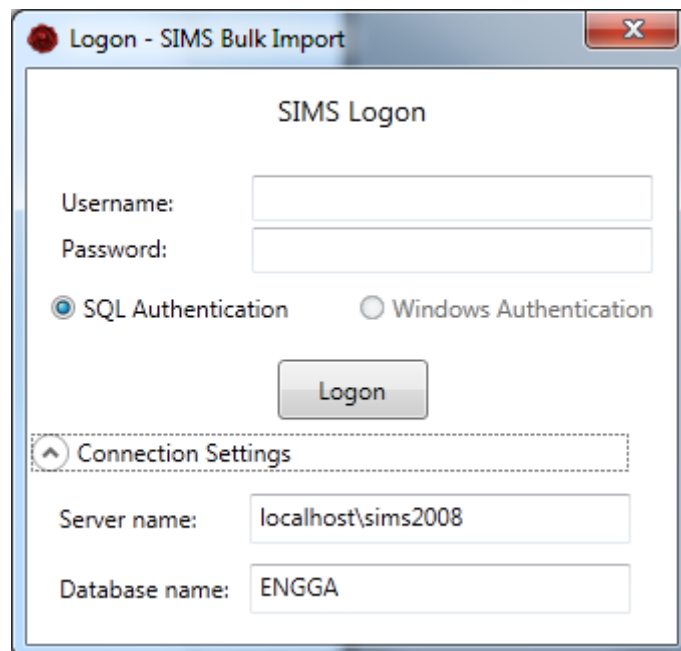
When you first do this, it will need to create a connection to the SIMS .net database and you'll see:



Currently only SIMS SQL logins are supported :(

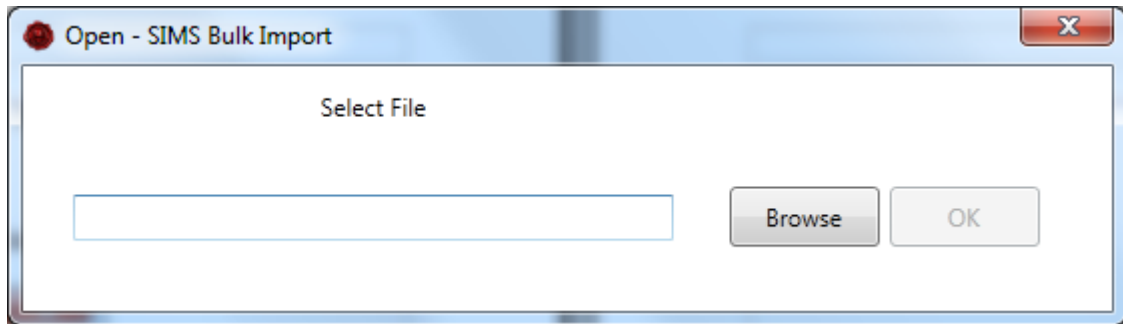
Enter your **Username** and **Password** then click **Logon**, if you have multiple database it's worth checking the connection settings.

Click the **Connection Settings** to see the details that SIMS Bulk Import will use



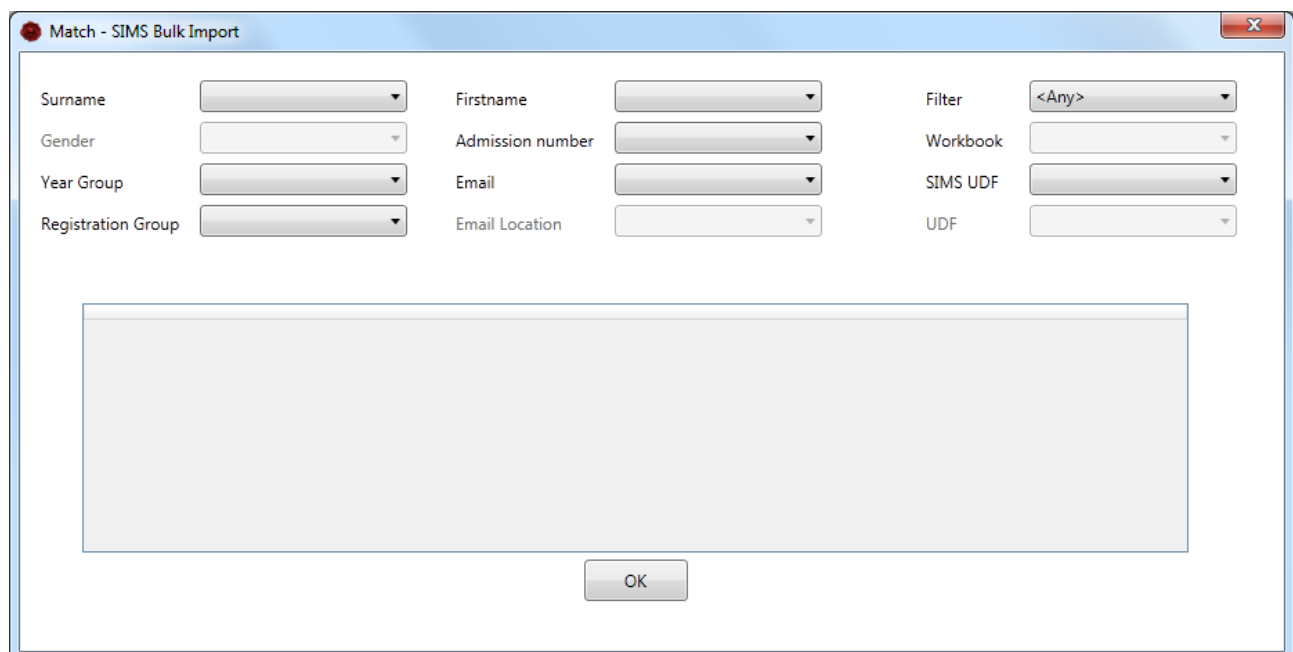
Once you're connected you see that the bottom status bar on the main window has updated with it's connection status

Once you've connected to the database, you need to select the file you wish to import



You can do this by either type the address or using the **Browse** button. Once you've found it, click **OK**

Once you've selected the file, the tool will then process the file, this normally involves copying the file to your temporary directory so it can process it.



Once it's finished processing it, it will then give you the matching screen, this is where we match the fields from our file with the fields in SIMS .net.

As you match the fields the preview table will update. Please note this will only display the first 5 rows of data, this is due to performance issues.

If you require to import UDFs, it will list the UDFs that are already setup in SIMS .net, once you've selected which UDF you wish to import into, you then have to match that UDF to a field in your import file like you've just done, the field below UDF will update with the name of the UDF you selected and this should be used to match the chosen UDF field with the import file field.

Match - SIMS Bulk Import

Surname: Surname Firstname: Forename Filter: <Any>

Gender: Admission number: Workbook:

Year Group: Email: SIMS UDF: Locker

Registration Group: Email Location: Locker

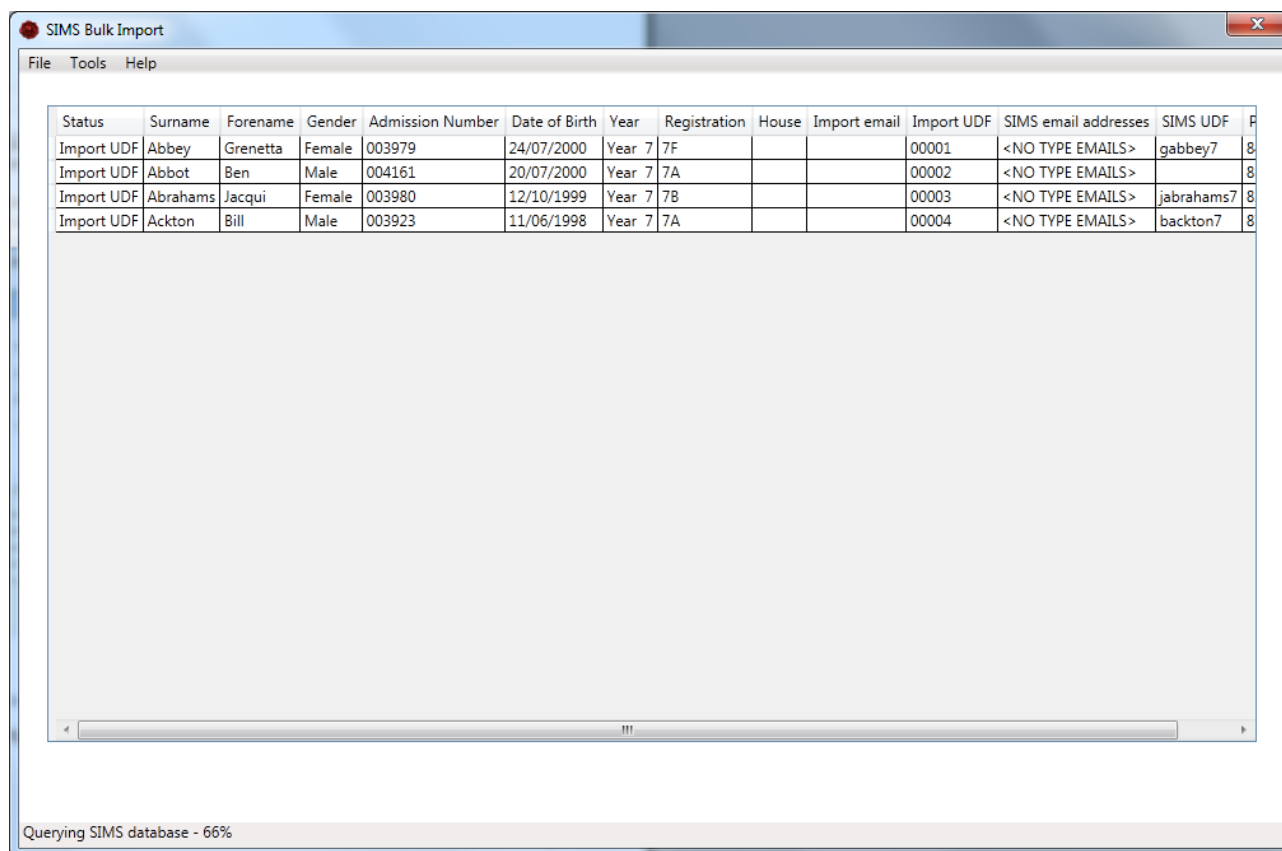
Locker
Test
test 2
Test1
Username

Surname	Firstname	Email	UDF	Year	Reg	Admission
Abbey	Grenetta					
Abbot	Ben					
Abrahams	Jacqui					
Ackton	Bill					
Ahmed	Ackmar					

OK

Once you are happy with the matching click OK.

The tool will then query the SIMS database and try and find the student in the SIMS .net database. If the database returns multiple students, it currently, does not allow you to select the correct student and you will not be able to import the data for that student. The tool will pull in additional or missing data that was not included in the import file, this should be used as an opportunity to verify the data is correct and the tool has matched to the correct student.



Status	Surname	Forename	Gender	Admission Number	Date of Birth	Year	Registration	House	Import email	Import UDF	SIMS email addresses	SIMS UDF	F
Import UDF	Abbey	Grenetta	Female	003979	24/07/2000	Year 7	7F			00001	<NO TYPE EMAILS>	gabbey7	8
Import UDF	Abbot	Ben	Male	004161	20/07/2000	Year 7	7A			00002	<NO TYPE EMAILS>		8
Import UDF	Abrahams	Jacqui	Female	003980	12/10/1999	Year 7	7B			00003	<NO TYPE EMAILS>	jabrahams7	8
Import UDF	Ackton	Bill	Male	003923	11/06/1998	Year 7	7A			00004	<NO TYPE EMAILS>	backton7	8

Querying SIMS database - 66%

The status column will detail the action that the tool will perform when you click the Import button. Such as Import UDF and/or email (address), any other status will be ignored.

The import button will only appear once the tool has finished querying the SIMS database.

If you are unable to match students, it is recommended that you check within SIMS .net, as the same search routine is used. For example, the firstname may be spelt differently, it might be worth using admission number

Caution:

If you use admission number and you are providing this service to a number of schools, all though the admission number is unique, it is only unique for that school. Ensure you have the correct file for the correct school.

Once the import is complete the report will open.

SIMS Bulk Import

Version:	0.7.16.0
Date:	11/07/2012
Type:	Pupil

Surname	Forename	Gender	Admission Number	Date of birth	Year	Registration	PersonID	Result	Item	Value	Notes
Abbey	Grenetta	Female	Female	Female	Female	Female	8404	Import Failed	UDF	00001	
Abbot	Ben	Male	Male	Male	Male	Male	8894	Import Failed	UDF	00002	
Abrahams	Jacqui	Female	Female	Female	Female	Female	8225	Import Failed	UDF	00003	
Ackton	Bill	Male	Male	Male	Male	Male	8716	Import Failed	UDF	00004	
Ahmed	Ackmar	Male	Male	Male	Male	Male	8249	Import Failed	UDF	00005	
Akmal	Mohammed	Male	Male	Male	Male	Male	8440	Import Failed	UDF	00006	

Copyright © Matt Smith 2011

FAQs

Q. How does the system check for updates? Can this be turned off?

A. It currently uses ClickOnce which will check for updates every time it runs. It cannot be turned off.

Q. How are the SIMS connection details detected?

A. It uses the connect.ini, it looks in the following locations in this order:

1. Application directory (same location as the SIMS Bulk Import Tool)
2. In the SIMS Application directory as set in the SIMS.ini
3. In the c:\program files\sims\sims .net
4. In the c:\program files (x86)\sims\sims .net

Redirects are supported but not recommended. If you manually change the connection details a temporary connect.ini will be generated and used.