

---

## **Smart Application Launcher and Updater Tool**

### **User's guide**

Author : Serge Bollaerts  
Version : 2  
Date : 8/12/2008

**Table of Contents**

User's manual .....	3
What is Smart Application Launcher and Updater Tool? .....	3
Starting Smart Application Launcher and Updater Tool .....	4
Starting an application .....	5
Managed shortcuts .....	6
What if an error occurs? .....	6

## USER'S MANUAL

---

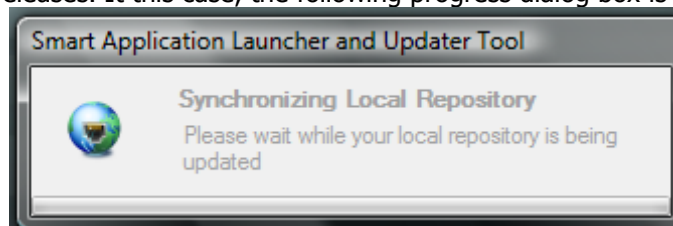
### WHAT IS SMART APPLICATION LAUNCHER AND UPDATER TOOL?

Smart Application Launcher and Updater Tool (or SmartLauncher) is a tool that can be used in enterprises to ensure the users have the latest versions of your software. SmartLauncher has these main features:

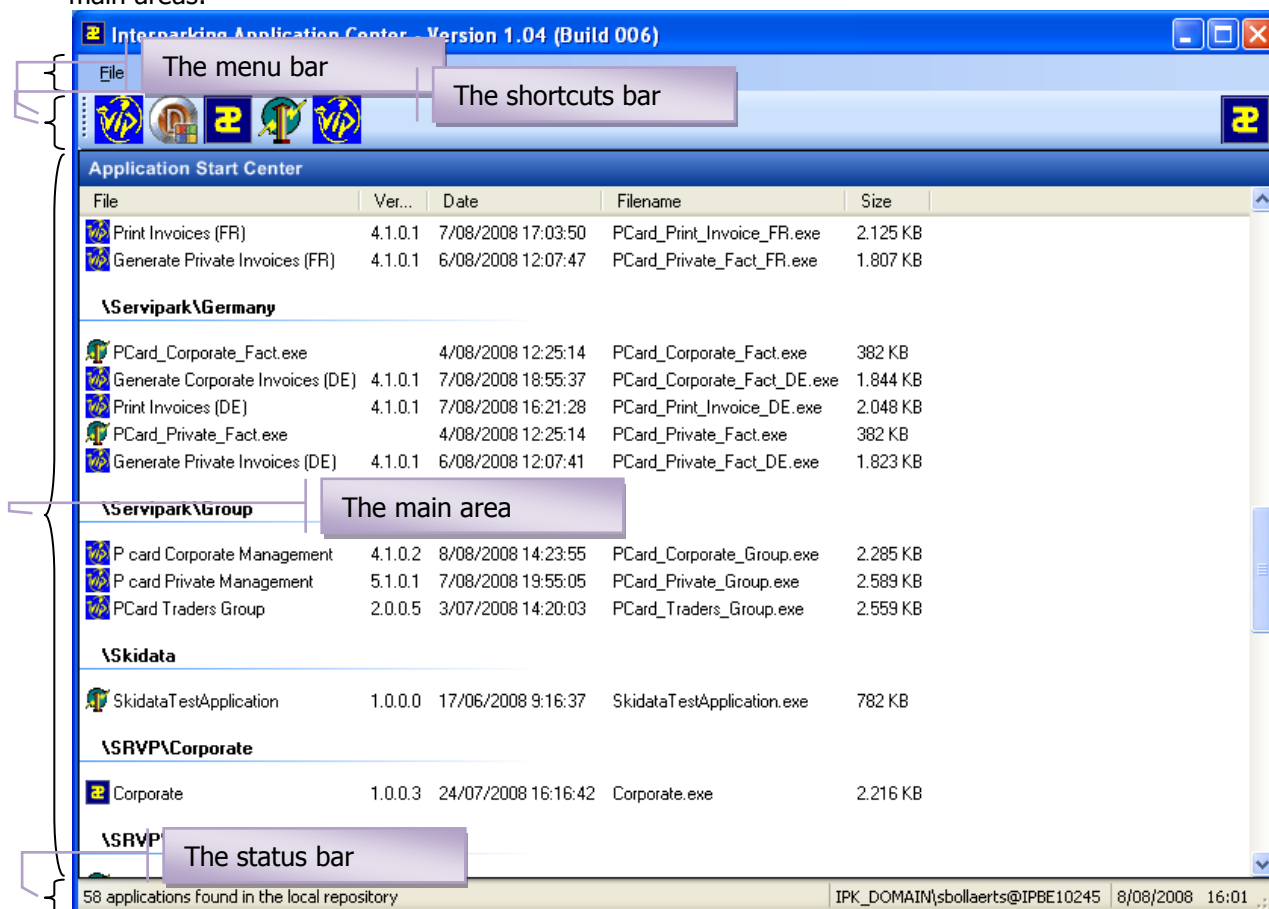
- Software updates can be done from many automatic or manual ways:
  - When you start Smart Application Launcher and Updater Tool
  - When you start an application from the "Application Start Center"
  - When you start an application from a managed shortcut
  - Manually, from the "Application Update Center"
- Software can be started from many different manners:
  - From Application Launcher and Updater Tool
    - Through the "Application Start Center" screen
    - From the list of the most recent software used
  - From your Windows Start menu
  - From a managed shortcut, that is, a shortcut that has been created by SmartLauncher
- In case of errors, a bug report is sent to your IT helpdesk with all necessary information to identify the error cause.

## STARTING SMART APPLICATION LAUNCHER AND UPDATER TOOL

Depending on the settings defined for your country, SmartLauncher can first download newest software releases. In this case, the following progress dialog box is displayed:



Once your workstation is up-to-date, the main screen is displayed. It can be divided into 4 main areas:



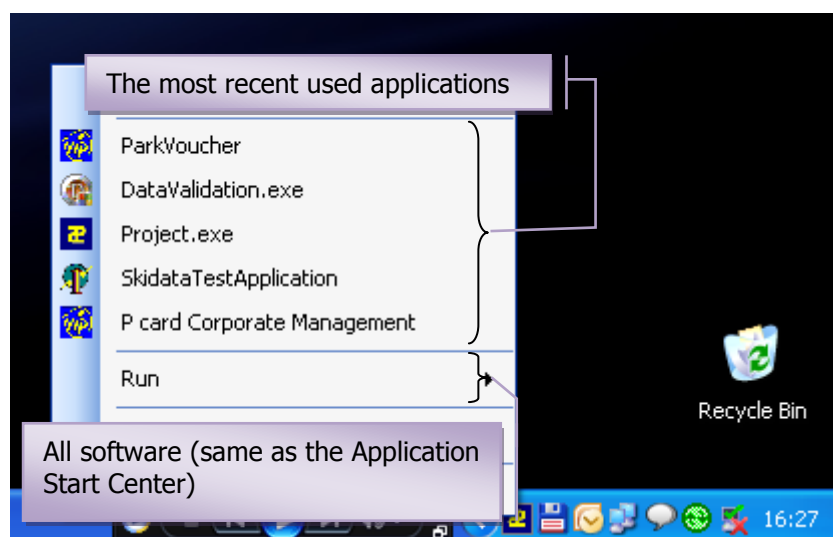
The **shortcuts bar** regroups the list of the 10 most recent software used. This list is also available when IAC is minimized and put in the system tray.

The **main area** is used to display the *Application Start Center* or the *Application Update Center*. The *Application Start Center* shows the list of all available software. The *Application Update Center* is used to perform a manual software update: its availability depends on your country's policies.

When SmartLauncher is minimized, it is put in the system tray (in the task bar, near your clock):



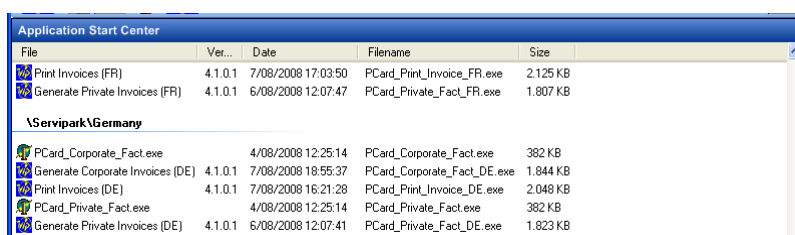
A right click on the icon expands quick access menu:



## STARTING AN APPLICATION

You can start an application different manner:

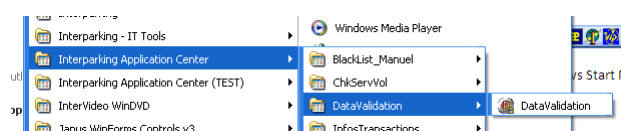
- From the Application Start Center:
  - Double click on the selected icon, or simply press “Enter”



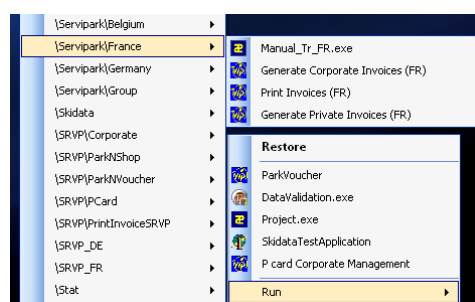
- From the Shortcuts bar



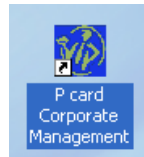
- From the Windows Start Menu



- From the system tray



- From a managed shortcut



## MANAGED SHORTCUTS

A managed shortcut is a shortcut that has been created with SmartLauncher. With managed shortcuts, your applications are always updated. ***Standard shortcuts created by Windows do not update your software!***

To create a shortcut, simply drag the selected icon from the Application Start Center and drop it on the desired destination (I.e.: on your desktop).

## WHAT IF AN ERROR OCCURS?

In case of serious error, a bug report is automatically generated: it contains information to help the support team to discover the cause of the error (your program configuration, the activity log and a snapshot of your screen). Click on "Send" to send the report.

Send a bug report

Smart Application Launcher has encountered a problem and needs to close. We are sorry for the inconvenience.

In order to fix the problem, an error report will be sent to your IT helpdesk. This report contains the following information:

More information >>

Send

Send a bug report

Smart Application Launcher has encountered a problem and needs to close. We are sorry for the inconvenience.

In order to fix the problem, an error report will be sent to your IT helpdesk. This report contains the following information:

More information <<

Detailed error information follows:

```

=====
=== Environment Information ===
=====
Date and Time      : 8/08/2008 16:52:01
Machine Name      : IPBE10245
Current User       : IPK_DOMAIN\sbollaerts
Program Version    : 1.4.6.0
Program Path       : C:\IPKG_PROD\SmartLauncher.exe
Log file           : SmartLauncher.log
Screen Capture     : BugReport_SmartLauncher.png
IP addresses       : 169.254.2.2

=====
=== Application Information ===
=====
HideWhenMinimized = True
LogRotation        = 3
SendBugReport      = True
RepositoryHome     = \\ipbe1015\ipkg
WindowState        = Normal
SmtpHost            = ipbe10101
GroupApplications  = True
SmtpFrom            = adminit@interparking.com
BasicMode          = True
UpdateOnStart      = True
Icon               = Interparking

```

Send