



Visual Team Foundation Client

User manual

Change set












Version	Modifier	Modified
v1.0	vtfcpm	2011.12.21



Contents

1. Introduction.....	4
2. System requirements	5
2.1 Hardware requirements	5
2.1.1 Processor	5
2.1.2 RAM	5
2.1.3 Hard Disk	5
2.1.4 CD or DVD Drive	5
2.1.5 Display	5
2.1.6 LAN	5
2.2 Software requirements	5
2.2.1 Supported Operating Systems.....	5
2.2.2 Runtime environment	5
3. Setup VTFC application.....	6
4. Start VTFC application	11
4.1 From the Program Files	11
4.2 Quick start	11
4.3 Introduction of the main window	12
4.3.1 Folder tree	12
4.3.2 Document list	12
4.3.3 Output	12
5. Main menu	13
5.1 File	13
5.1.1 Exit	13
5.2 Team	13
5.2.1 Connect.....	13
5.2.2 Get latest version	13
5.2.3 Disconnect	13
5.3 Tools	13
5.3.1 Configuration.....	14
5.4 Help	14
6. Functions	15
6.1 Configuration.....	15



6.1.1	Settings details	15
6.2	Connect to TFS server.....	15
6.3	Get latest version	17
6.4	Folder tree node context menu functions	18
6.4.1	New 	18
6.4.2	Add items 	20
6.4.3	Delete 	21
6.5	Document list item context menu functions.....	21
6.5.1	Upload 	21
6.5.2	Edit 	21
6.5.3	Save as... 	21
6.5.4	Rename 	22
6.5.5	Check out 	22
6.5.6	Check in 	22
6.5.7	Undo pending changes 	22
6.5.8	Delete 	22
6.6	Document list item colors	23
6.6.1	Color details.....	23
7.	Tips and known issues.....	24
7.1	Usage out of domain	24
7.2	Not supported file formats.....	24
7.3	Displaying file icons in VTFC	24



1. Introduction

This document contains user manual information about VTFC application. Aim of current document to introduce usage of main features and not trivial functions.



2. System requirements

2.1 Hardware requirements

2.1.1 Processor

400 MHz Pentium processor or equivalent (Minimum); 1GHz Pentium processor or equivalent (Recommended)

2.1.2 RAM

96 MB (Minimum); 256 MB (Recommended)

2.1.3 Hard Disk

Up to 500 MB of available space may be required

2.1.4 CD or DVD Drive

Not required

2.1.5 Display

800 x 600, 256 colors (Minimum); 1024 x 768 high color, 32-bit (Recommended)

2.1.6 LAN

Ethernet 10 Mbps (Minimum)

2.2 Software requirements

2.2.1 Supported Operating Systems

- Windows Server 2003
- Windows Server 2008
- Windows Vista
- Windows XP
- Windows 7

2.2.2 Runtime environment

.NET Framework 3.5 + SP1 Redistribute package

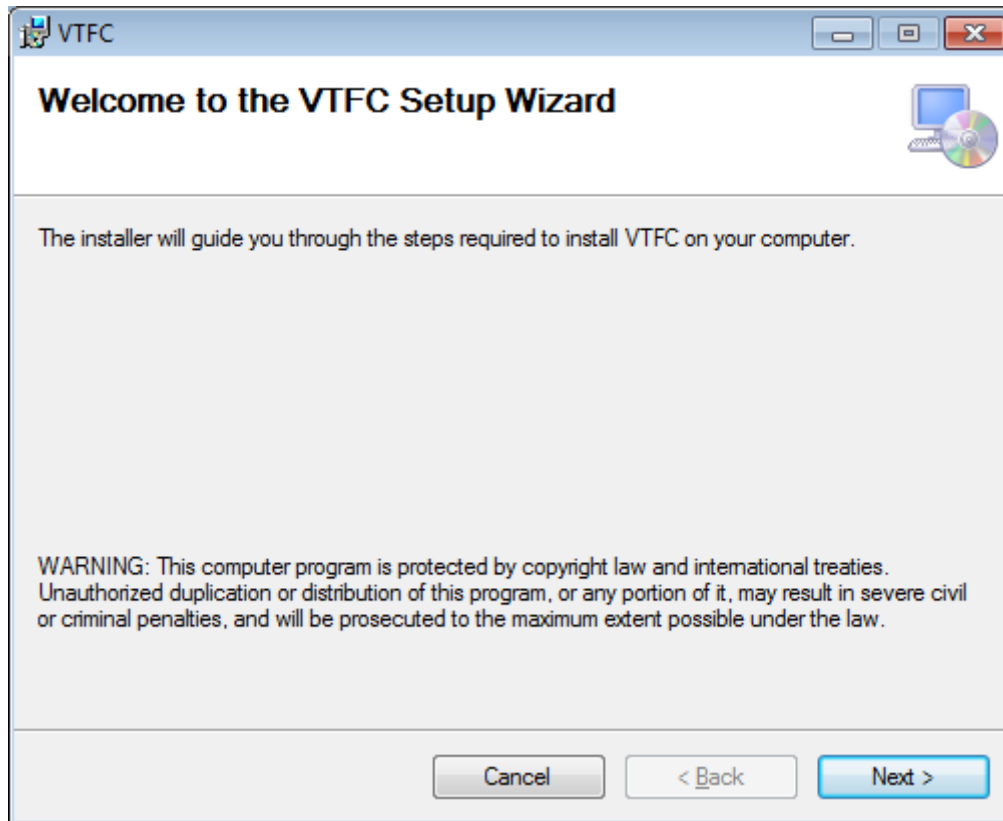


3. Setup VTFC application

Download setup application (VTFC.msi) from project website (<http://vtfc.codeplex.com/>).

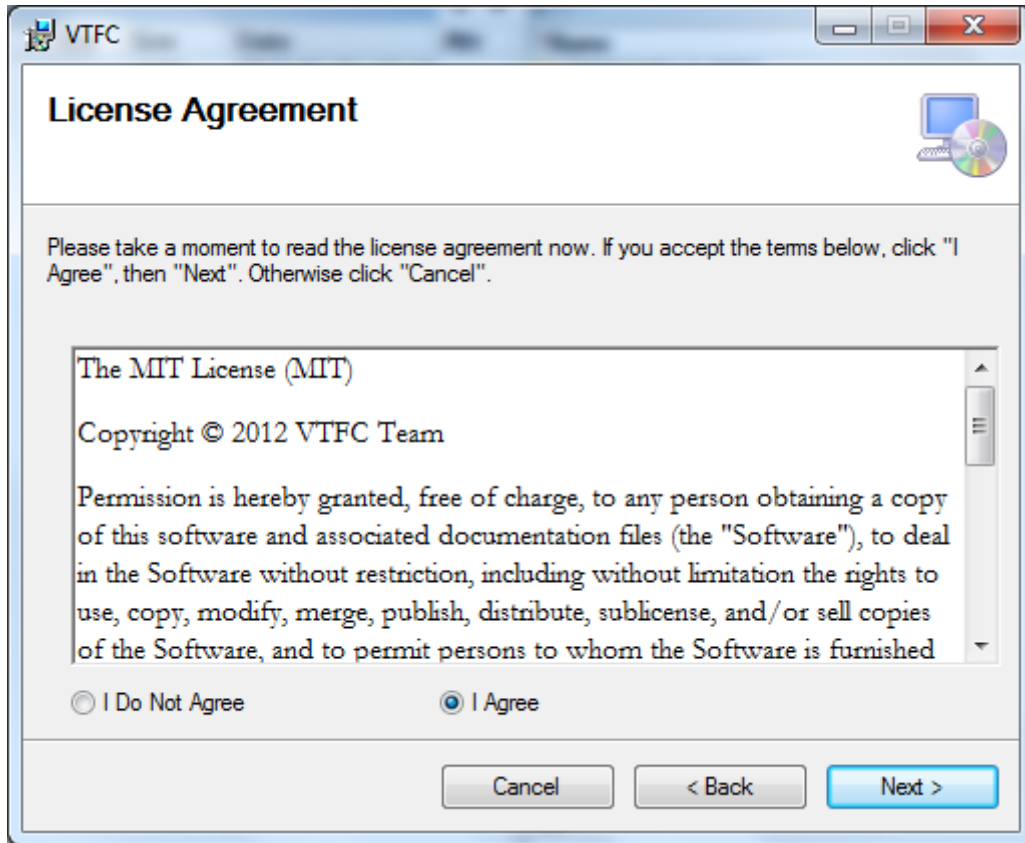
Start VTFC.msi application.

Press button “Next”.



Welcome site

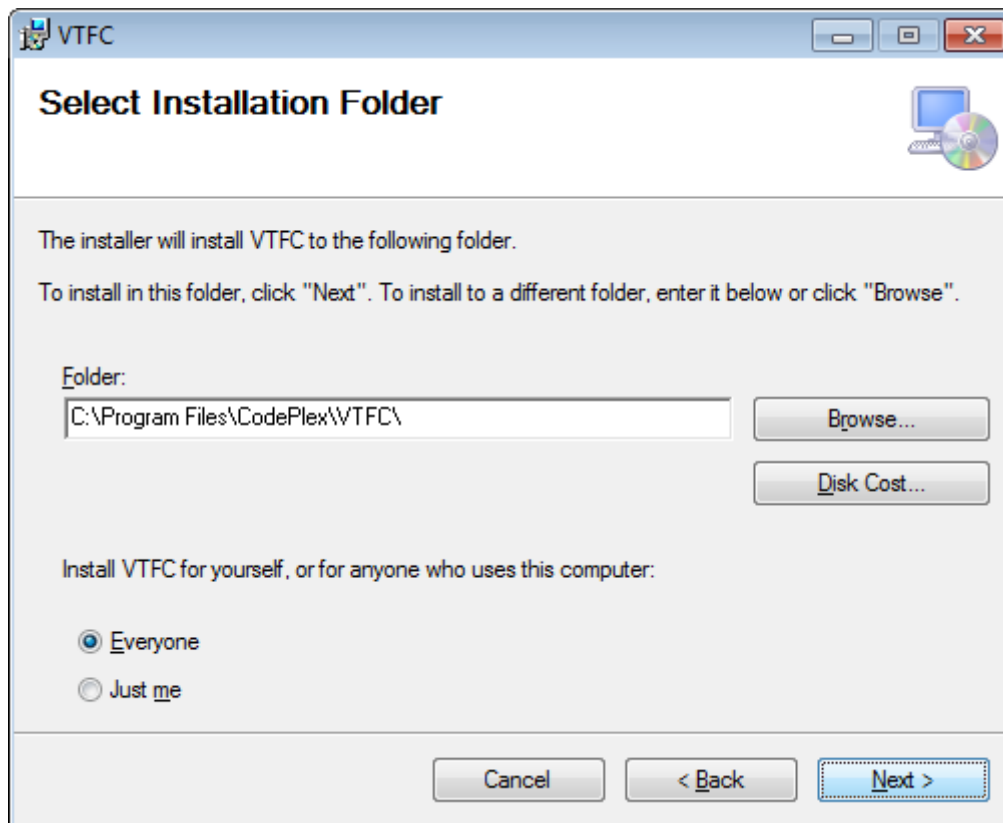
Read the license agreement. If you want to use VTFC press option “I Agree”.



License Agreement site

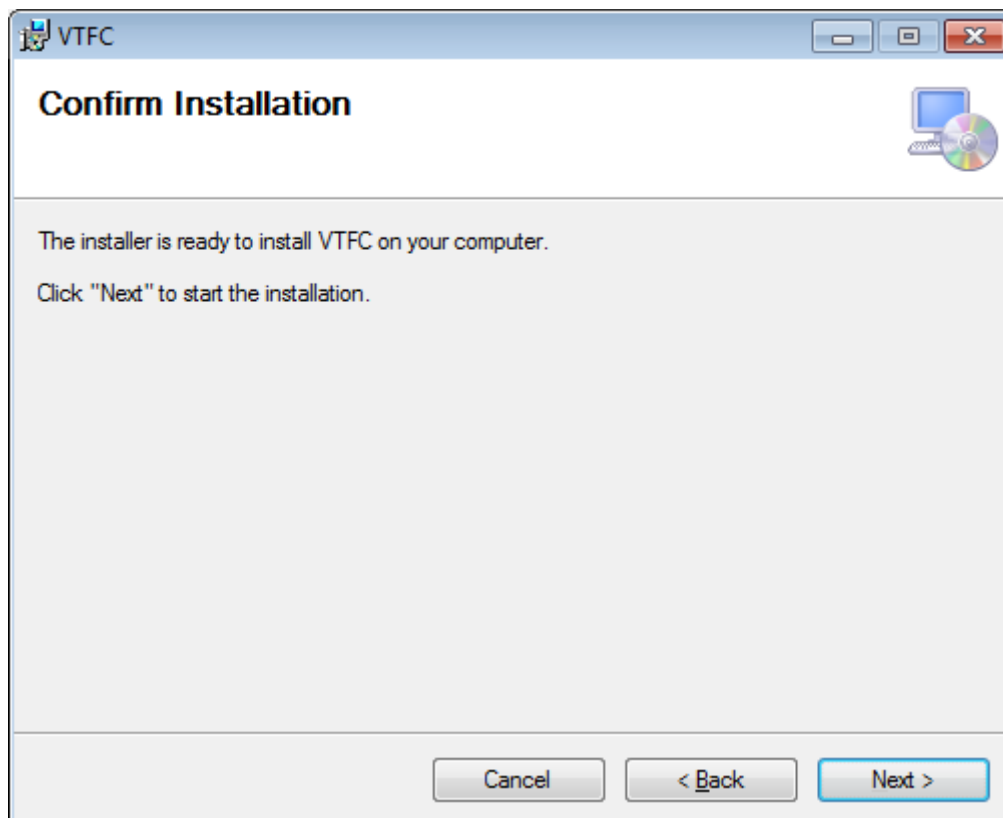
Set the “Folder” parameter and the “Install for” properties.

Press button “Next”.



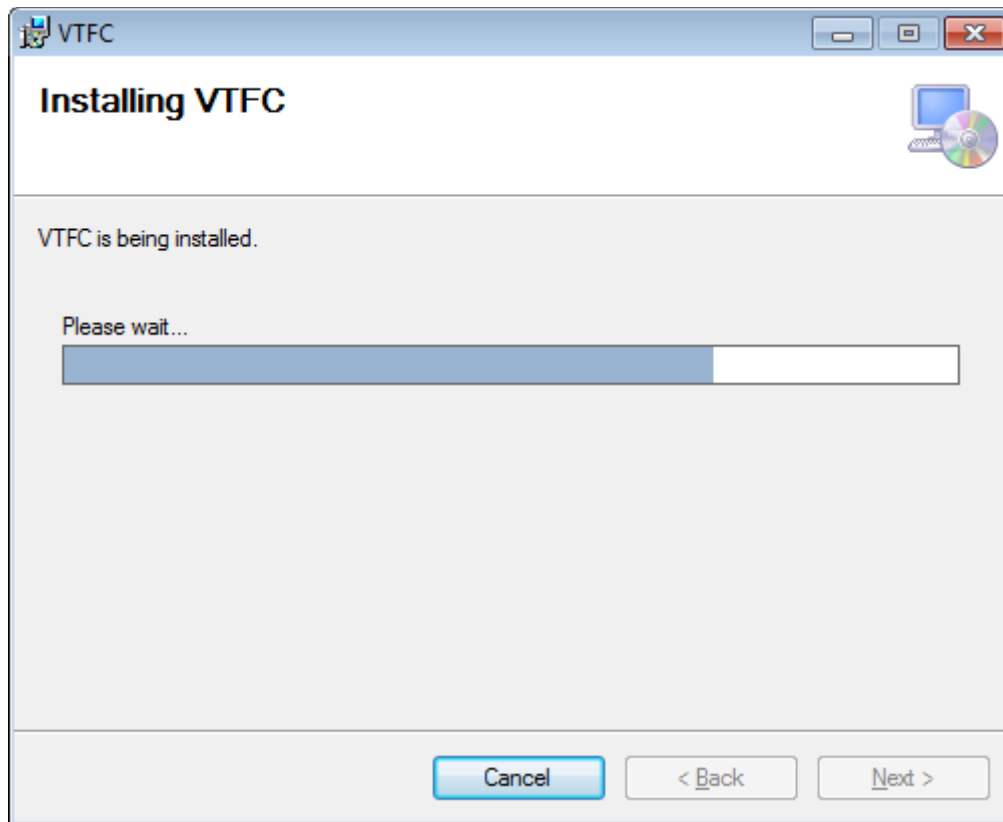
Select installation folder site

Press button "Next".



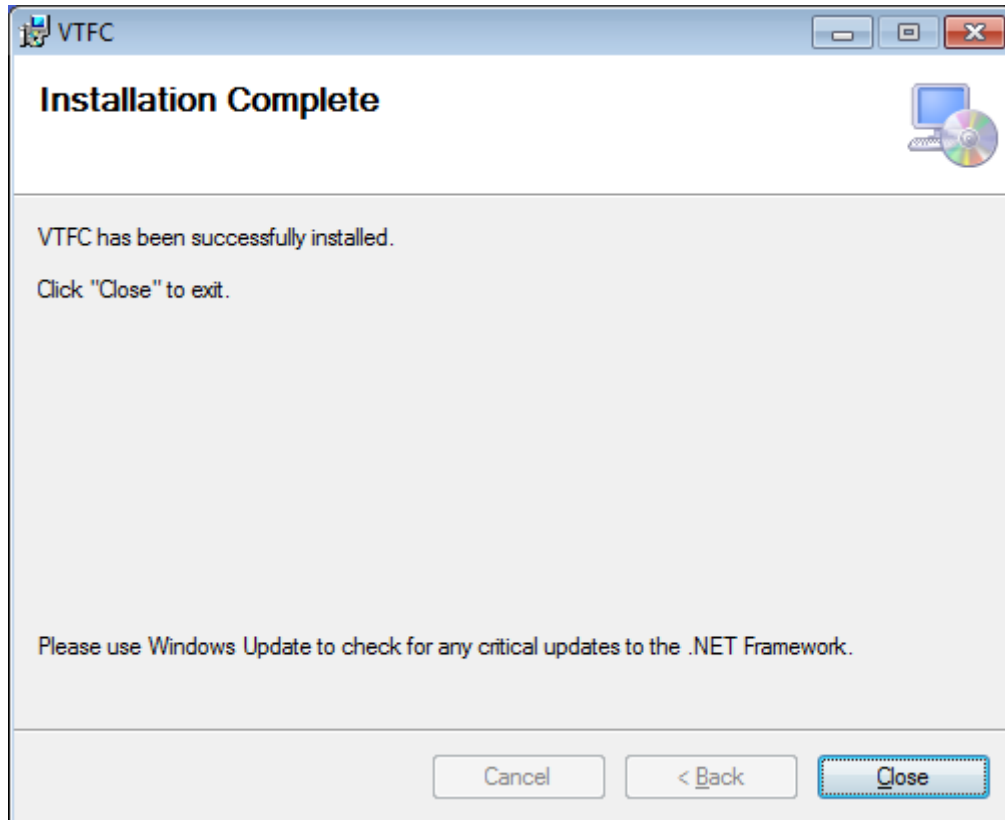


Confirm installation site



Installing site

Press button “Close”.



Installation complete site

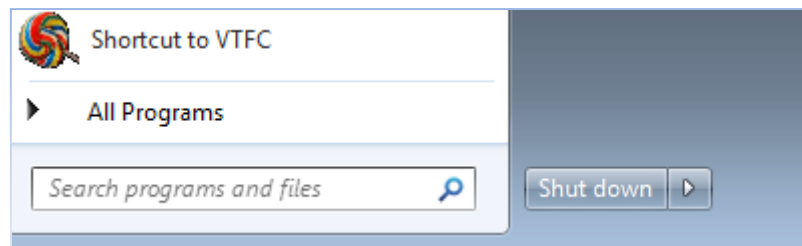


4. Start VTFC application

You can start VTFC application in two ways, explained below.

4.1 From the Program Files

Open Start\Program Files\VTFC directory and execute “Shortcut to VTFC”.

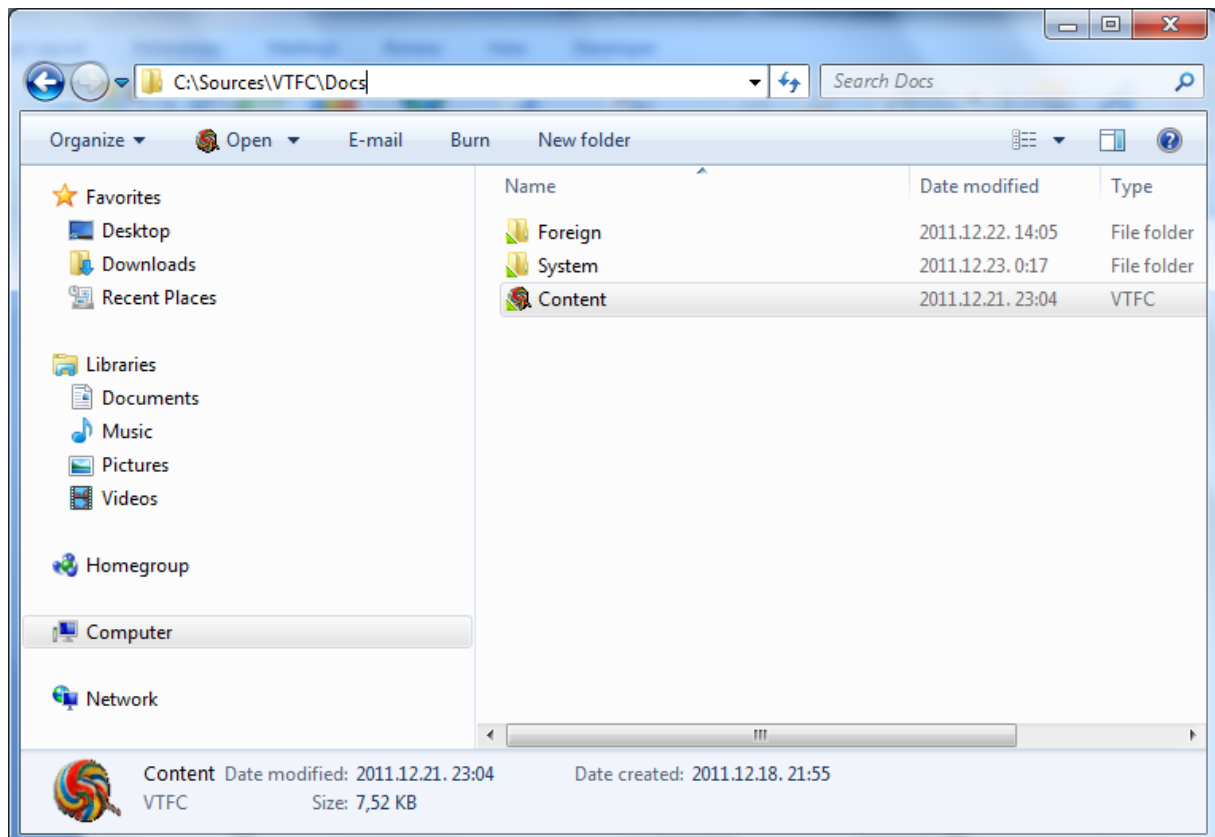


Start VTFC

4.2 Quick start

VTFC application creates a “Content.tfc” file in all workspaces of TFS servers.

Executing Content.tfc file with e.g. mouse double click, connection will be built (see in 6.2) and tasks for the synchronization will be collected (see in 6.3).

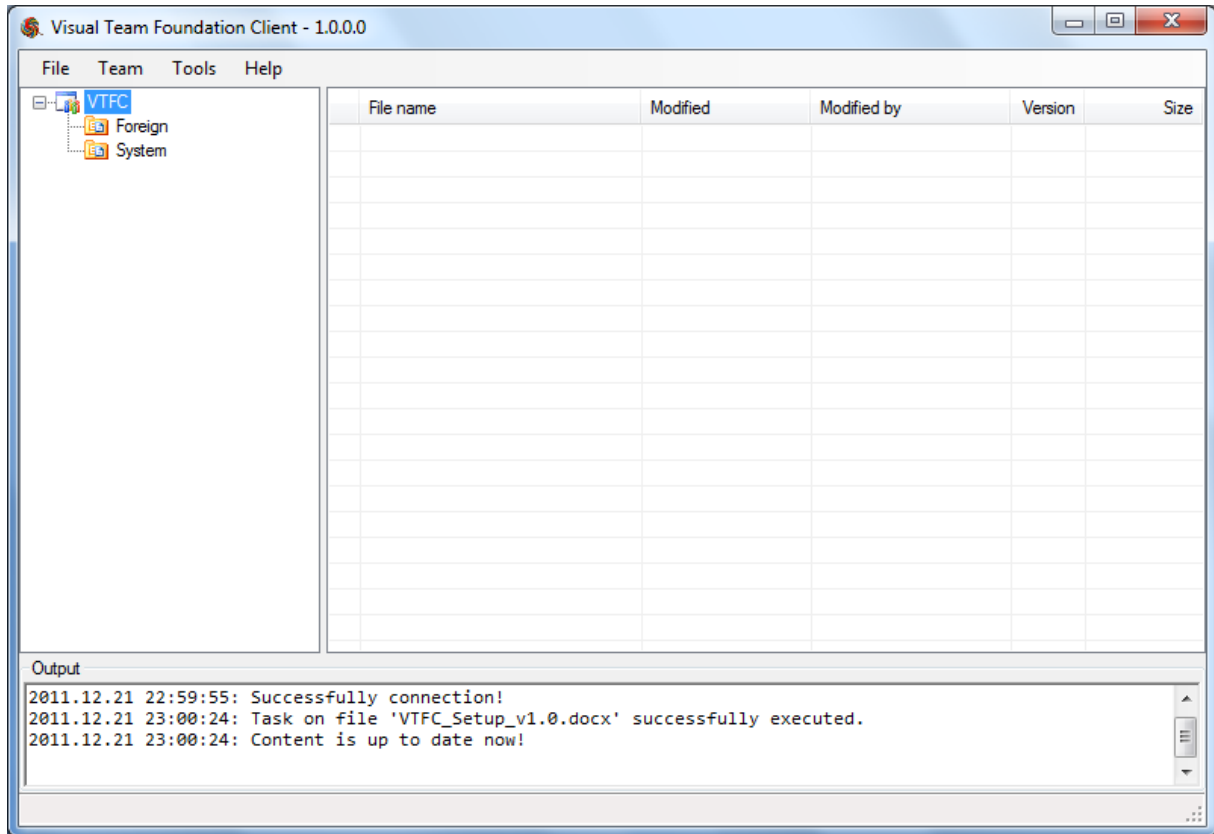


Content.tfc



4.3 Introduction of the main window

After opening VTFC application main window will appear.



Main window

The main window can be divided into three parts: folder tree, document list and output.

4.3.1 Folder tree

Folder tree displays document libraries and subfolders.

Context menu functions of tree nodes are detailed in chapter 6.4.

4.3.2 Document list

Document list displays documents of the selected list/sub folder in folder tree (see in 4.3.1).

Context menu functions of a list item detailed in chapter 6.5.

4.3.3 Output

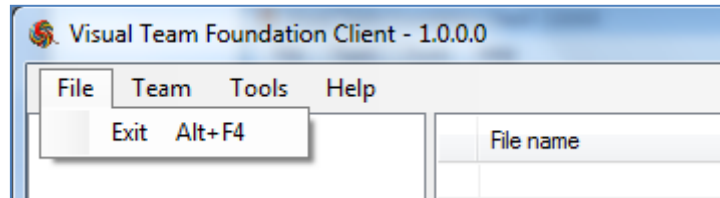
Output contains scrollable executed function list with timestamps.



5. Main menu

This chapter introduces main menu of main window.

5.1 File



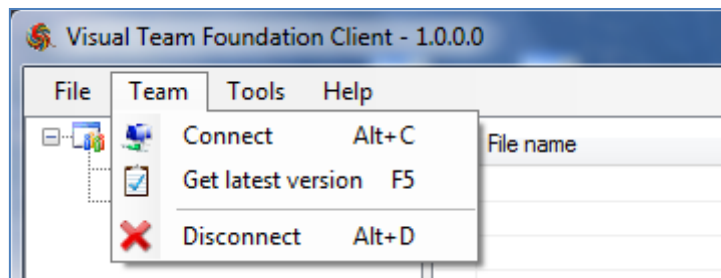
File menu

5.1.1 Exit

Close the current VTFC application.

5.2 Team

The “Team” menu encapsulates TFS server specific features.



Team menu

5.2.1 Connect

You can select and connect to a TFS server (see in 6.2).

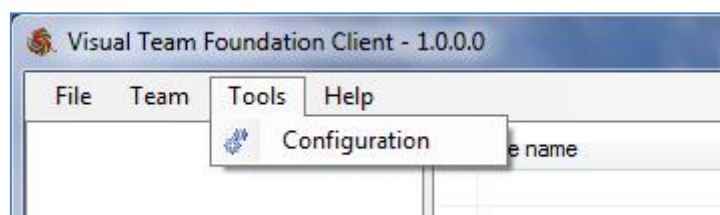
5.2.2 Get latest version

State of workspace documents can be refreshed (see in 6.3).

5.2.3 Disconnect

You can close connection with selected TFS server (see in 5.2.1).

5.3 Tools



Tools menu

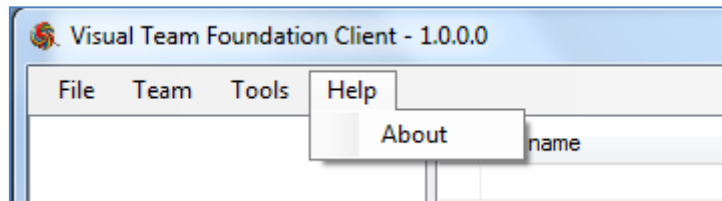


5.3.1 Configuration

You can configure the VTFC application (see in 6.1).

It is important to note: configuration settings will be applied for all the VTFC users who use this application on the workstation!

5.4 Help



Help menu

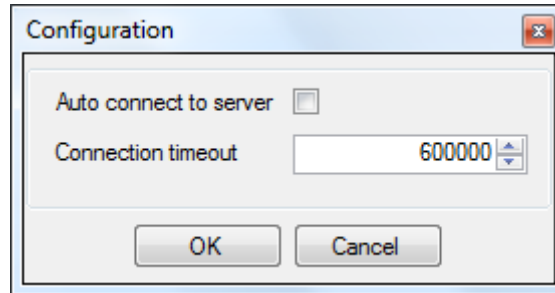


6. Functions

In this chapter main functions are listed.

6.1 Configuration

After calling 5.3.1 menu item, configuration form will appear.



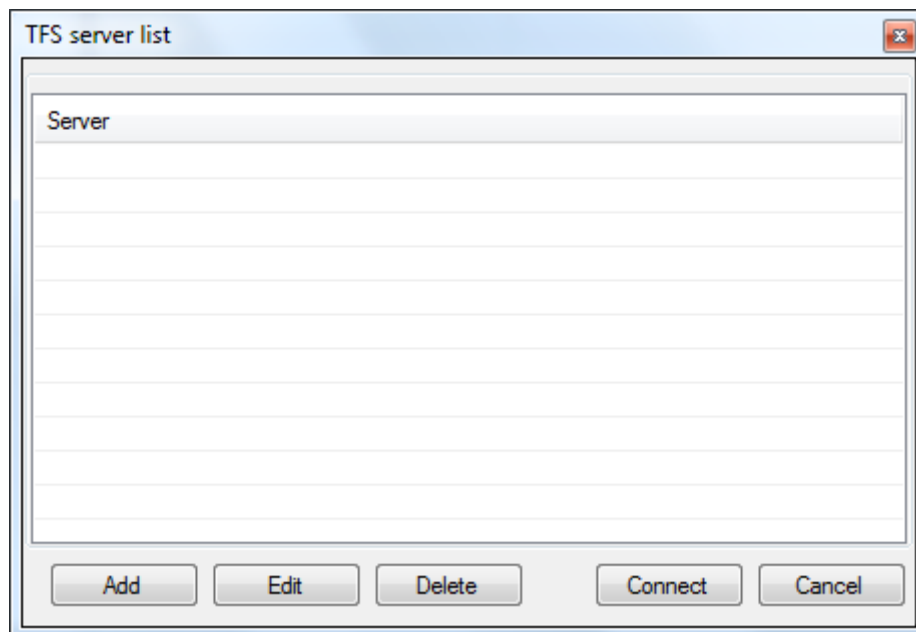
Configuration form

6.1.1 Settings details

Name	Description
Auto connect to server	After opening the VTFC application (see in 4.1), it connects automatically to TFS server.
Connection timeout	Connection timeout of web services of TFS server in milliseconds.

6.2 Connect to TFS server

Calling the “Connect” menu item (see in 5.2.1), TFS server list dialog window will appear.



TFS server list dialog window



Visual Team Foundation Client

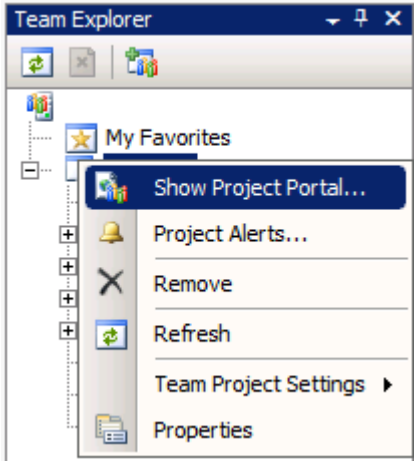
User manual

You can add a new TFS server, or edit a TFS server, or delete a TFS server.

After pressing button “Add” or” Edit”, TFS server property dialog window will appear.

TFS server data dialog window

TFS server can be configured following parameters:

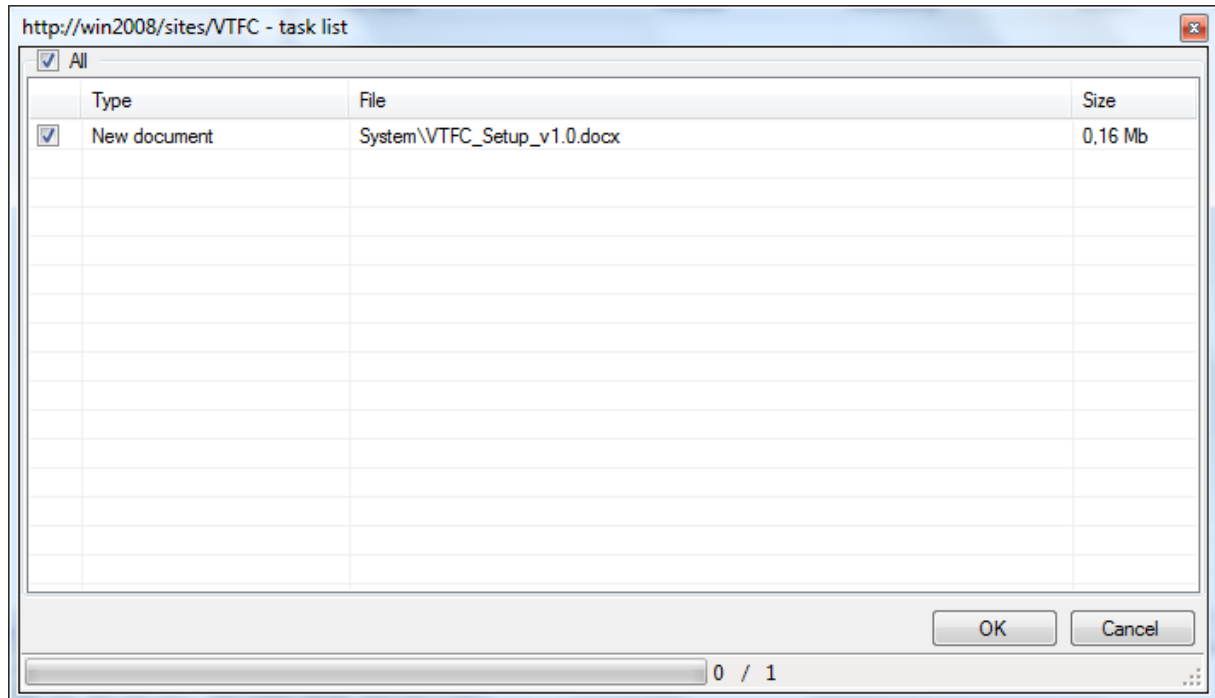
Name	Description
Server Url	Url of the TFS project portal. Tip: you can get this property calling “Show Project Portal ...” function from the Team Explorer toolbox of Visual Studio. 
Work directory	Work directory of the TFS server on the workstation.
Network authentication	Check this option, if you connect to TFS server not the same domain.
User name	Your user name on TFS server.
Password	Your password on TFS server.
Domain	Domain name of your NT name on TFS server.



Check in type	Custom option, it is hang on your project policy.
Show uncontrolled files	If you check this option, you will see all files in selected work sub directory.

6.3 Get latest version

Calling Get latest version menu item (see in 5.2.2), VTFC collect all change sets from TFS server.

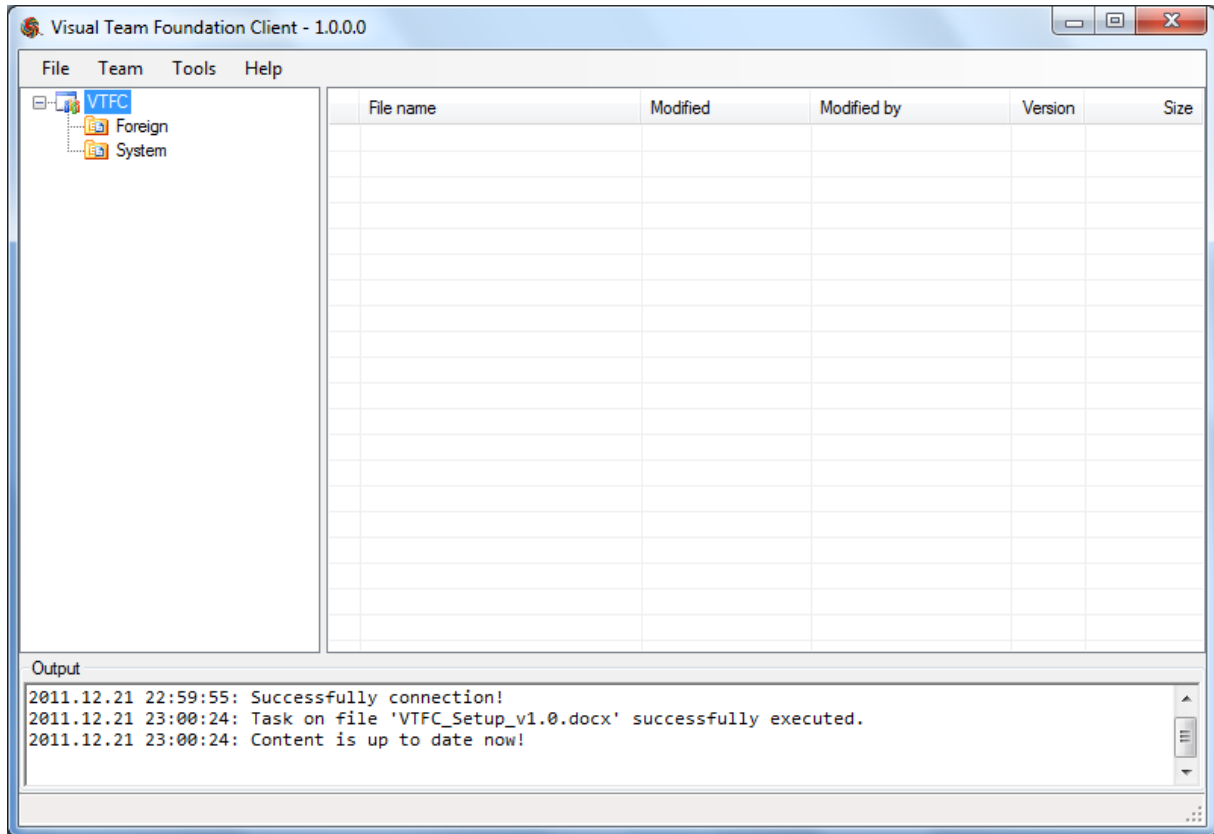


Task list dialog window

There are three types of task.

Task type	Description
Newer version	Document was modified and a newer version was checked in (see in 6.5.6).
New document	New document was uploaded (see in 6.5.1) to TFS server.
Replace document	Document was modified out of the VTFC application, therefore should be overwritten from TFS server.

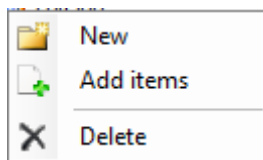
You can enable or disable change sets. After pressing button OK, server state will be synchronized and folder tree in main window will be bind.



Up-to-date main window

6.4 Folder tree node context menu functions

Folder tree (see in 4.3.1) can be modified using the context menu below.



6.4.1 New

Create new folder function must divide by type of folder node.

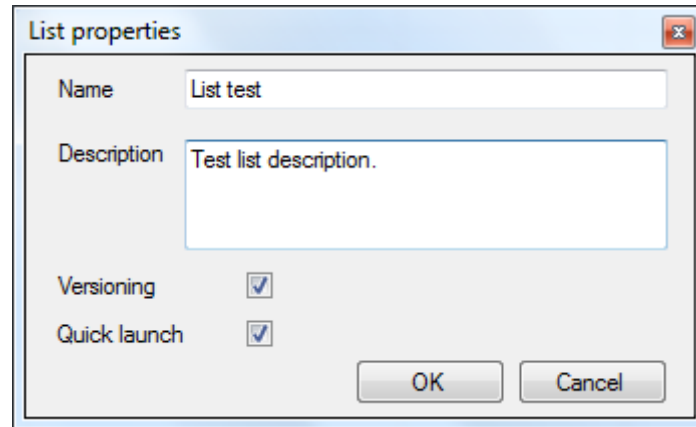
6.4.1.1 New list

Calling “New” menu on the project node , new list dialog window will appear.



Visual Team Foundation Client

User manual



The 'List properties' dialog window has a title bar with a close button. It contains two text input fields: 'Name' with the value 'List test' and 'Description' with the value 'Test list description.'. Below these are two checked checkboxes labeled 'Versioning' and 'Quick launch'. At the bottom are 'OK' and 'Cancel' buttons.

New list dialog window

6.4.1.1.1 List properties

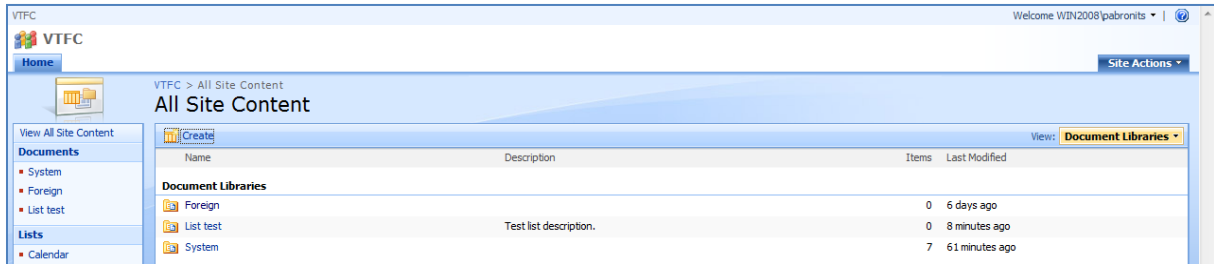
Task type	Description
Name	<p>Display name of the list:</p> <p>VTFC > List test > Settings > General Settings</p> <p>Document Library General Settings: List test</p> <p>Name and Description</p> <p>Type a new name as you want it to appear in headings and links throughout the site. Type descriptive text that will help site visitors use this document library.</p> <p>Name: List test</p>
Description	<p>Description of the list:</p> <p>VTFC > List test > Settings > General Settings</p> <p>Document Library General Settings: List test</p> <p>Name and Description</p> <p>Type a new name as you want it to appear in headings and links throughout the site. Type descriptive text that will help site visitors use this document library.</p> <p>Name: List test</p> <p>Description: Test list description.</p>
Versioning	<p>Versioning of the list:</p> <p>VTFC > List test > Settings > Versioning Settings</p> <p>Document Library Versioning Settings: List test</p> <p>Content Approval</p> <p>Specify whether new items or changes to existing items should remain in a draft state until they have been approved. Learn about requiring approval.</p> <p>Require content approval for submitted items?</p> <p><input type="radio"/> Yes <input checked="" type="radio"/> No</p> <p>Document Version History</p> <p>Specify whether a version is created each time you edit a file in this document library. Learn about versions.</p> <p>Create a version each time you edit a file in this document library?</p> <p><input type="radio"/> No versioning</p> <p><input checked="" type="radio"/> Create major versions</p> <p>Example: 1, 2, 3, 4</p> <p><input type="radio"/> Create major and minor (draft) versions</p> <p>Example: 1.0, 1.1, 1.2, 2.0</p>
Quick launch	<p>Specify whether a link to this document library appears in the Quick Launch:</p> <p>VTFC > List test > Settings > General Settings</p> <p>Document Library General Settings: List test</p> <p>Name and Description</p> <p>Type a new name as you want it to appear in headings and links throughout the site. Type descriptive text that will help site visitors use this document library.</p> <p>Name: List test</p> <p>Description: Test list description.</p> <p>Navigation</p> <p>Specify whether a link to this document library appears in the Quick Launch.</p> <p><input checked="" type="radio"/> Display this document library on the Quick Launch?</p> <p><input checked="" type="radio"/> Yes <input type="radio"/> No</p>

After pressing button “OK” on the new list dialog window, new list will appear on TFS server.



Visual Team Foundation Client

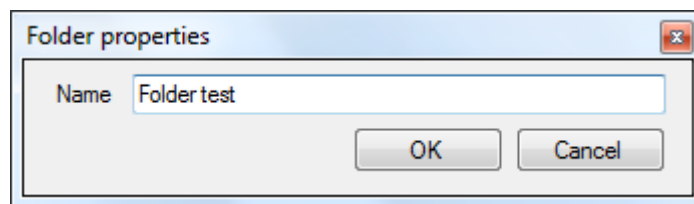
User manual



Lists on project portal of TFS server

6.4.1.2 New folder

Calling “New” menu on a list  or folder  node new folder dialog window will appear.

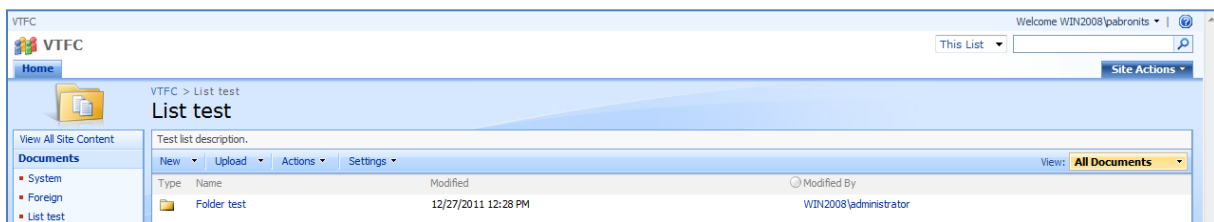


New folder dialog window

6.4.1.2.1 Folder properties

Task type	Description
Name	<p>Name property of the folder:</p> <p>VTFC > List test > Folder test > Edit Item</p> <p>List test: Folder test</p> <p>OK Cancel</p> <p>Delete Item * indicates a required field</p> <p>Name * Folder test</p>

After pressing button “OK” on new folder dialog window, new folder will appears on TFS server.

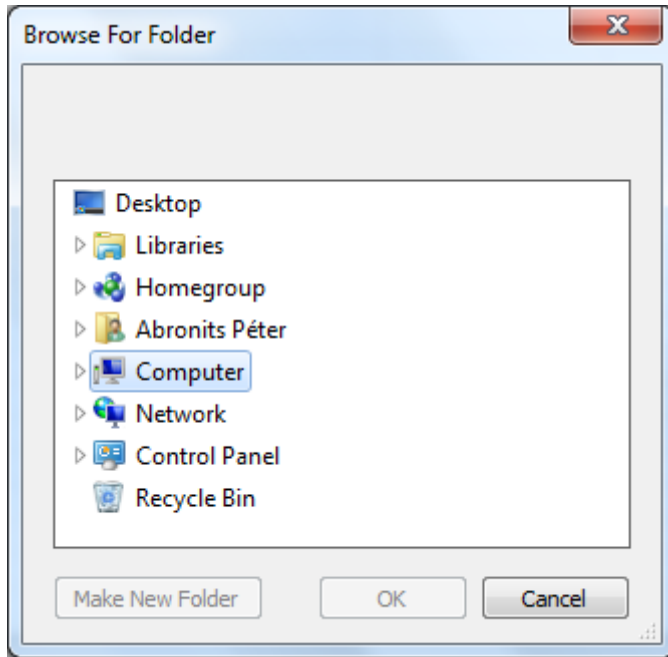


List content on TFS server

6.4.2 Add items

Calling “Add items” menu, you can batch attach directory including file contents recursively.

Using the function, a folder browser dialog window will appear.



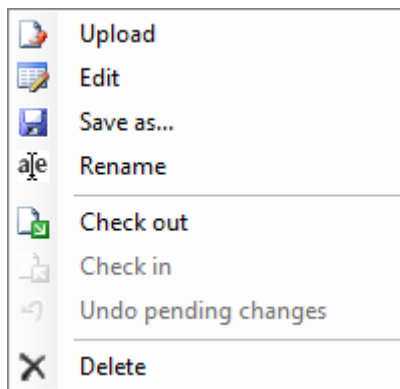
Select a path and press button “OK”.

6.4.3 Delete

Calling “Delete” menu you can delete a list or folder including documents in TFS server and in local workplace.

6.5 Document list item context menu functions

Document list items (see in 4.3.24.3.1) can be modified using the context menu below.



6.5.1 Upload

Calling “Upload” menu, open file dialog window will appear and you can upload single or batched file(s) from local file system of workstation.

6.5.2 Edit

Calling “Edit” menu, selected document will be executed in a new process.





6.5.3 Save as...

Calling “Save as...” menu, folder browser or save file dialog will appear and you can save as the selected document(s).



6.5.4 Rename

Calling “Rename” menu, an editable textbox control will appear on the selected document list item.

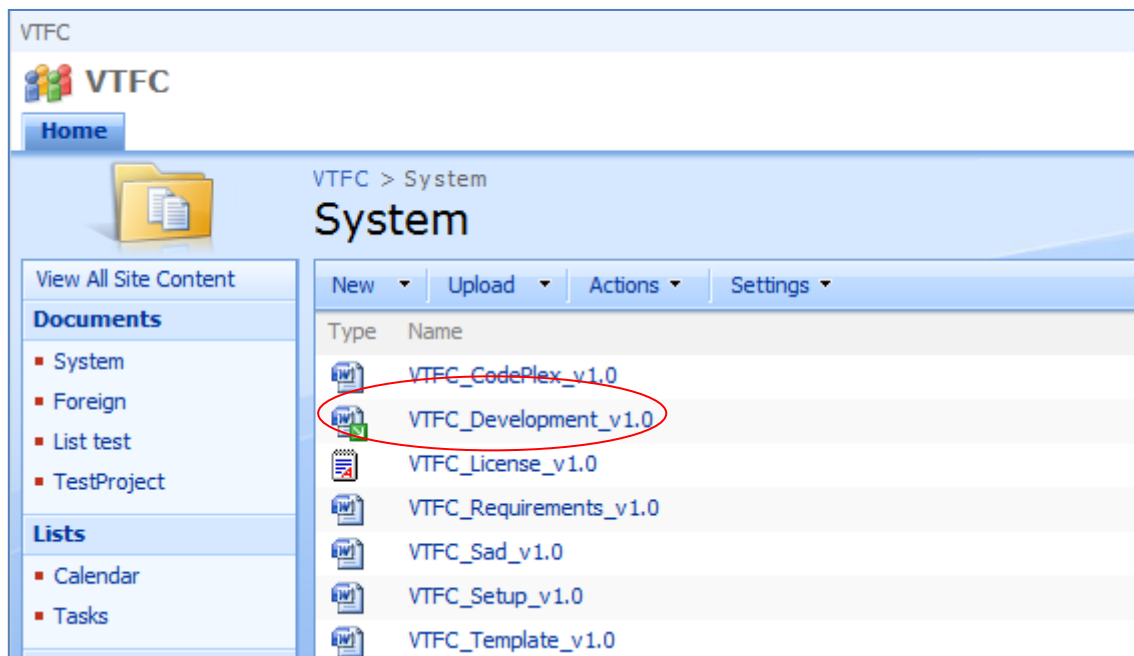
File name	Modified	Modified by	Version	Size
 VTFC_CodePlex_v1.0.docx	2011.12.27 16:04:11	WIN2008\administrator	2.0	0,15 Mb
 VTFC_Development_v1.0.docx	2011.12.27 16:04:16	WIN2008\administrator	2.0	0,03 Mb
 VTFC_Handbook_v0.0.docx	2011.12.27 16:04:22	WIN2008\administrator	2.0	0,17 Mb
 VTFC_License_v1.0.docx	2011.12.27 16:04:22	WIN2008\administrator	2.0	0,02 Mb

Renaming document

After editing the file name, press return for executing renaming or escape to discard changes.

6.5.5 Check out

Calling “Check out” menu, selected document(s) will checked out on TFS server.



Checked out document on TFS server

6.5.6 Check in

Calling “Check in” menu on a checked out document, local changes will be published on TFS server. If the versioning property of parent document library is enabled on level major or minor, the other users can get the newer version of document (see in 6.3).

6.5.7 Undo pending changes

Calling “Undo pending changes” menu on a checked out document, local changes will be roll backed.




6.5.8 Delete

You can delete document(s) on TFS server and if you accept in your local file system.



6.6 Document list item colors

VTFC application use visual markers for displaying states of documents.

	File name	Modified	Modified by	Version	Size
	VTFC_CodePlex_v1.0.docx	2011.12.21 23:04:39	WIN2008\administrator	5.0	0,15 Mb
	VTFC_Development_v1.0.docx	2011.12.27 11:25:15	WIN2008\administrator	5.0	0,03 Mb
	VTFC_Handbook_v0.0.docx	2011.12.05 00:57:19	N/A	N/A	0,16 Mb

Color palette in document list

6.6.1 Color details

Color	Description
Yellow highlight color	File is not up to dated.
Red font color	File checked out by “Modified by” user.
Gray font color	File is out of TFS control.



7. Tips and known issues

This chapter contains useful tips and know-how information for VTFC.

7.1 Usage out of domain

If you connect to a TFS server out of current domain and get an “*Object reference not set an instance of an object.*” error, follow instructions below:

<http://blogs.technet.com/b/isablog/archive/2008/10/02/unable-to-check-out-a-document-in-moss-2007-published-through-isa-server-2006.aspx>

7.2 Not supported file formats

You should check your TFS server and enable all necessarily file formats:

<http://support.microsoft.com/?kbid=920785>

7.3 Displaying file icons in VTFC

If you want to see your custom file icons in document list (see in 4.3.2), you must name the picture the following schema:

IC{file extension}.GIF; in case of PDF, you must rename the picture: ICPDF.GIF

Details about deployment of custom icons can be found here: <http://support.microsoft.com/kb/837849>