



Wsus Package Publisher : Installation Guide

I. **Check pre-requisites :**

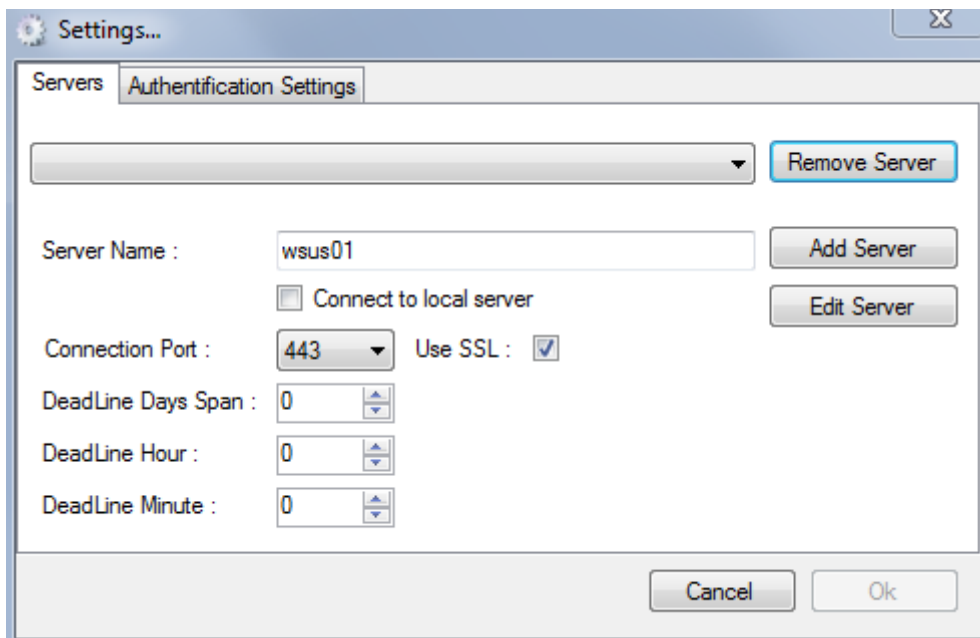
- a. Microsoft .NET 4.0 must be installed on the local machine.
- b. You must be Administrator of the local machine.
- c. The Wsus server must be at release 3.0 SP2 or greater.
- d. You can run Wsus Package Publisher on the Wsus server, or on a workstation. If so, Wsus Administration Console must be installed first (or RSAT for Windows 8). And the account use to run "Wsus Package Publisher" must be part of the "Wsus Administrators" group of the Wsus server.
- e. To run on Windows Server 2012, use the x64 version.
- f. To run on Windows 8, first install RSAT (Remote Server Administration Tools).

II. **Download binaries :**

- a. Go to : <http://wsuspackagepublisher.codeplex.com/releases>
- b. Get the latest release.

III. **Connecting to the Wsus Server :**

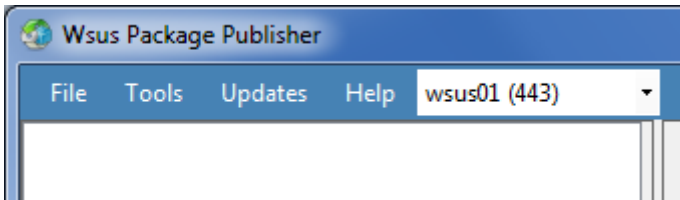
- a. Start : Wsus Package Publisher.exe
- b. Go to : « Tools » then « Settings »



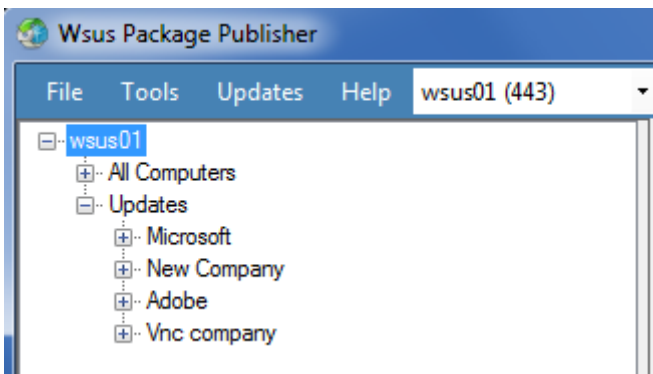
- c. Fill the « Server Name » field.
- d. Choose the « Connection Port »
- e. Checked the « Use SSL » as needed.
- f. If « Wsus Package Publisher » runs on the Wsus server, check the « Connect to local server » checkbox.



- g. Click on the « Add Server » button.
- h. Add other Server if necessary.
- i. Click « Ok » to close the Settings Form.
- j. Ensure the right Server is selected :

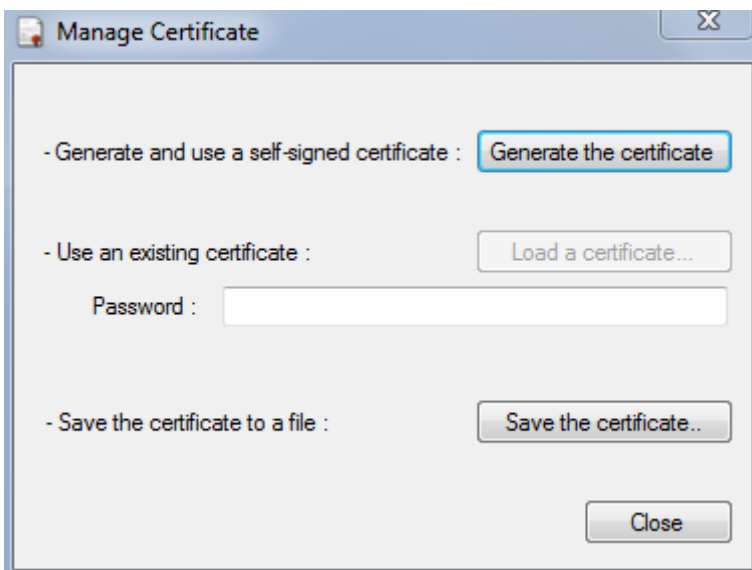


- k. Click on the « Connect to Server» button.

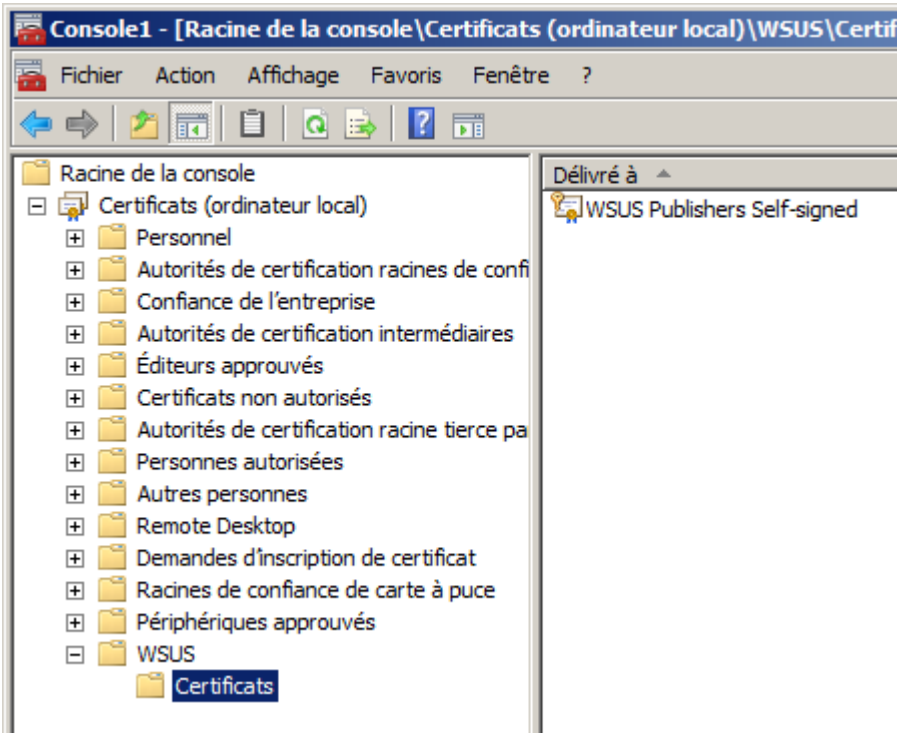


IV. Setting the certificate :

- a. When connected, go to « Tools » then « Certificate » :



- b. If you don't have a Code Signing Certificate, click on « Generate the certificate ». Once the certificate have been generate, click on the « Save the certificate » button to record the file onto the disk. (you will need it in the next step).
- c. If you already own a Code Signing Certificate, then enter the Certificate password into the "password" field and click on the « Load a certificate... » button. (You will have to provide a .pfx file)



On the Wsus server, open mmc.exe and add the « Certificate » snappin (local computer).

If the operation succeed, you should see the certificate into « Certificate » snappin .

V. **Distributing certificate to clients :**

- a. Case you use the Wsus self-signed certificate :
 - i. The certificate you have saved in the IV. b. step have to be distributing by GPO. Both to the « Trusted Root Certification Authorities » and « Trusted Publishers» certificates folder.
- b. Case you provide your own certificate :
 - i. You only have to distribute the certificate to the « « Trusted Publishers» certificates folder.
 - ii. The certificate of the Authority that had generated the Code Signing Certificate should already be present in the « Trusted Root Certification Authorities ».

VI. **Set Computers to install Locally Publish Updates :**

- a. In Workgroup:
You have to set this registry Value:

HKEY_LOCAL_MACHINE\SOFTWARE\Policies\Microsoft\Windows\WindowsUpdate\AcceptTrustedPublisherCerts = 1

- b. In Active Directory:

In the GPO you use to set your computers, set the option “Allow signed content from intranet Microsoft update service location” to ‘yes’.

