

Addonics

TECHNOLOGIES

Mini NAS

Model: NAS25H DU2

Quick Install Guide

FCC Warning Statement

This equipment has been tested and found to comply with the limits for a class B digital device pursuant to Part 15 of the FCC rules. These limits are designed to provide reasonable protection against harmful interference in a residential installation. This equipment generates, uses and can radiate radio frequency energy. If not installed and used in accordance with the instructions, it may cause harmful interference to radio communications. However, there is no guarantee that interference will not occur in a particular installation. If the equipment does cause harmful interference to radio or television reception, which can be determined by turning the equipment on and off, the user is encouraged to try and correct the interference by one or more of the following suggestions.

Reorient or relocate the receiving antenna

Increase the distance between the equipment and the receiver

Connect the equipment to a different power outlet other than the one where receiver is connected

Consult a certified television or radio technician

For more detailed information on setting up the mini NAS, refer to the User Manual located on the CD that came with the device.

Follow the instructions to help you connect, setup, and configure it.

Note: Any 2.5" SATA drive that you connect to the mini NAS will initially be required to be formatted. This means, if you are connecting a 2.5" SATA drive with data on it, the hard drive will be formatted erasing all the information. It is recommended that a backup of this drive be made.

Network Environment

There are 3 different setup conditions you can choose:

A. Setup mini NAS as a DHCP Client:

If the mini NAS is connected to a LAN network with an active DHCP server, it will obtain an IP address from DHCP server automatically.

B. Setup mini NAS as DHCP Server:

If your LAN network does not have an active DHCP server, the mini NAS will immediately act as DHCP server and assign itself an IP address for installation.

C. Setup mini NAS in Static IP environment:

You first need to configure the IP address for mini NAS to operate in the static IP environment. For Configuring details, please refer to "LAN Config" setup page.

I. Mini NAS Hardware Installation

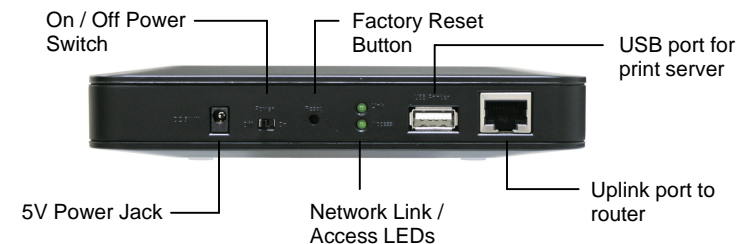


1. To open the mini NAS, remove the 2 screws located at the bottom part of the enclosure.



2. Insert the SATA drive into the SATA connector and secure the drive using the screws provided.

3. Connect LAN cable to uplink port to LAN switch and/or router.
4. Connect 5V power adapter then power up the mini NAS.



Mini NAS connected directly to a computer's NIC card

If you connect the mini NAS to a computer directly, the will act as a DHCP server, assigning itself an IP address automatically and will also assign an IP address to the computer's network card. This configuration will not enable you to see the drive on the network.

Mini NAS connected to a Router or Switch

When the mini NAS is connected to a LAN network with an active DHCP server, it will obtain an IP address from DHCP server automatically. Or if your LAN network does not have an active DHCP server, mini NAS will immediately act as DHCP server and assign itself an IP address for installation

II. Search mini NAS using SDisk Utility

1. Browse the CD enclosed in the product package. Copy and paste "**SDisk Utility**" in to your computer then double click the icon to start search.

Note: "**SDisk utility**" was written with JAVA script, please make sure your computer has installed JAVA before, if not please install the JAVA JRE from the CD drive.

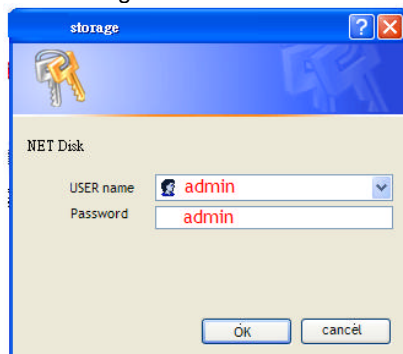


2. When mini NAS has been found, click "**Connect**" to enter web GUI utility.



Open mini NAS web GUI by using web browser.

1. Open web browser and type default host name "**storage**" in the search bar.
2. Default login is "**admin**" for both User name and password. Click "**OK**" to enter configurations.



Identification

You can change and modify your host, group name and password from this page. Click "**Apply**" to save the setting.

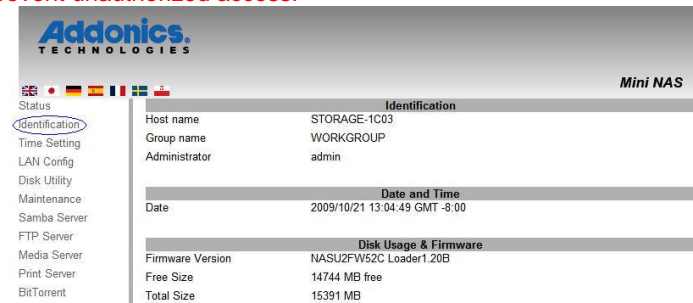
Host name: This is used to identify your device on the network. If you prefer a different name, type in the new name and click "**Apply**" to save setting.

Group Name: This should be the same as your workgroup. In general, the default "**WORKGROUP**" will be OK. But if your workstation belongs to different workgroup, type in the correct group name to modify.

For Window OS, right click on "**My computer**" and choose "**Properties**", go to the computer name tab to see your current workgroup.

If using a Mac OS system, to join a Windows workgroup, open the directory access utility (under Applications-> utilities). Select SMB and click configure to modify the settings (administrator access required to access this option.)

Note: We strongly suggest you to change the password as soon as you logged in, to prevent unauthorized access.



Date/ Time Setting

You can change time setting from this page. Clicks "**Apply**" to save the setting.

By default SNTP is set to Network Time Service otherwise select synchronize to PC. If internet access is available, we recommended setting SNTP to Network Time Service instead.



LAN Configuration

By default, “LAN Config” is set to “Automatic IP”. This will allow the mini NAS to obtain its IP address automatically. If you prefer setting it manually, select the static IP option, enter your own value and click “**Apply**” to confirm the new setting.

Addonics TECHNOLOGIES Mini NAS

LAN Config

☒ Automatic IP ☐ Static IP as below Apply

IP Address: 192.168.1.101

Subnet Mask: 255.255.255.0

Gateway: 192.168.1.1

Primary DNS: 192.168.1.1

Secondary DNS: 0.0.0.0

DHCP Config

DHCP Server: Disable ☐ Enable ☒ Disable Apply

MAC Address: 00:B3:F6:00:1C:03

Disk Utility

In this page, you can manage hard disk settings of the USB storage device.

Format: For first time installation, you need to format hard disk into FAT32 file system. Formatting the drive will erase all data on the hard drive.

Warning: For hard drives with data on it, create a backup before proceeding to format the hard drive!

Tip: You can transfer back the backup data to the NAS Public folder for sharing via the network or USB connection of the USB Storage device.

Sleep Time: This is to select hard disk sleeping mode.

Scan Disk: After the scan, it will show file content information and health status for the hard disk.

Addonics TECHNOLOGIES Mini NAS

Disk Utility

Disk ID: Seagate ST1_FTM1 6GL25H

Format Disk: You will lose all data! Do you want to do it? Format

Scan Disk: Wait several minutes to scan your hard disk information. Start

Refresh

Samba Server

Samba server allows you to share data or files through the network LAN. When a USB storage device is connected, a default Public folder is available to be shared among Guest users. A default Guest user is also created.

Note: Only use English alphabet for folder names and no special characters when creating new folders.

Addonics TECHNOLOGIES Mini NAS

Samba Server

Samba Status: ☒ Enable ☐ Disable Apply

Account List

User name	Password	Access	Status
Guest	*****	RW	ENABLED

Add Modify Delete On/Off

How to create a user

Click on the “**Add**” button and type new account name and password. Click “**OK**”. The NAS will also create a SAMBA folder named “User1”.

Addonics TECHNOLOGIES Mini NAS

Samba Add Account

Account Name: User1

Password: *****

Access: ☐ Read only ☒ Read/Write

Note: Maximum number of characters is 12.

Next Cancel

Click “**Modify**” to share a folder.

Addonics TECHNOLOGIES Mini NAS

Samba Server

Samba Status: ☒ Enable ☐ Disable Apply

Account List

User name	Password	Access	Status
Guest	*****	RW	ENABLED
User1	*****	RW	ENABLED

Add Modify Delete On/Off

Select “User1” from Folder List and click the “à” to add user on “Sharing List”.

Addonics TECHNOLOGIES Mini NAS

Modify Samba Account

Account Name: User1

Password: *****

Access: ☐ Read only ☒ Read/Write Apply

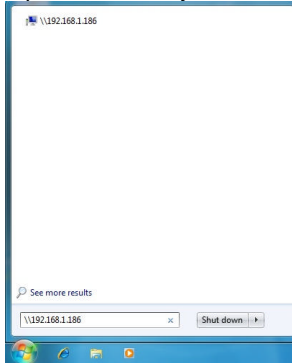
Folder List: PUBLIC, BF, User1

Sharing List: (empty)

Create Rename Delete Return

To access the PUBLIC folder of the Samba Server

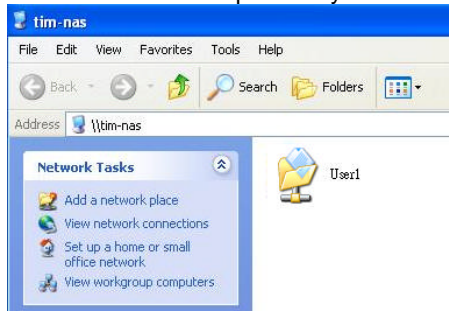
Click on the Windows icon located on the bottom left corner of the screen, on the "Search programs and files" \\ followed by the IP address.
Eg: \\192.168.1.121 and press Enter key to continue.



Type "Guest" as username. Leave password empty. Click on OK.
This will direct you to the Public folder on the NAS drive.



Now you have set up the folder that you wish to share on your NAS . This folder can be access from other computer on your local network.



To list the NAS drive in Network Places

Go to Network Places in Windows XP, under Network Tasks, click on the "Set up a home or small office network". Follow the wizard and once completed, reboot your system.

For Vista and Windows 7, enable file sharing when accessing the NAS over the network.

Access PUBLIC folder of mini NAS in Ubuntu 8.04

First, using the console get the prerequisites for the samba file system:

```
$ sudo aptitude install samba smbfs
```

```
$ mkdir /mnt/NAS
```

```
$ sudo mount.cifs //NAS__IP_address/Public /mnt/NAS -o username=Guest
```

Access PUBLIC folder of mini NAS in Mac OS X

1. Start at the "Go" drop down menu at the top of your screen, then click "Connect to server".
2. Type into the "Server Address" field 'smb://' followed by the IP address of the mini NAS you want to connect.
3. Click the "Connect" button in the bottom right corner of the window.
4. Enter in a username and password. Click the "OK" button in the bottom right hand corner of the window to finish

Note: The workgroup name needs to be the workgroup the PC belongs to. If you don't know the workgroup that the PC belongs to you can find out by right clicking on the "My Computer" desktop icon on the PC, selecting "Properties" and then selecting the "Computer Name" tab. The workgroup name is about half way down the window.

5. Select the "share" you are after. This simply refers to a particular group of shared files. Click "OK".

Technical Support

Phone: 408-453-6212
Hours: 8:30 am - 6:00 pm PST
Email: <http://www.addonics.com/support/query/>