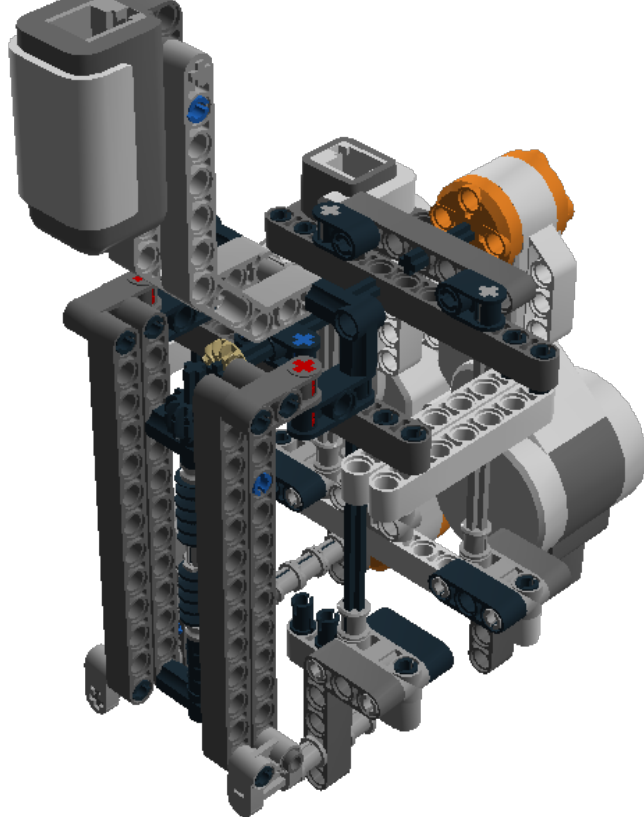


Model Name:
z-carrier

Number of Bricks: 115



1 x



1 x



1 x



1 x



1 x



1 x



1 x



1 x



1 x



1 x

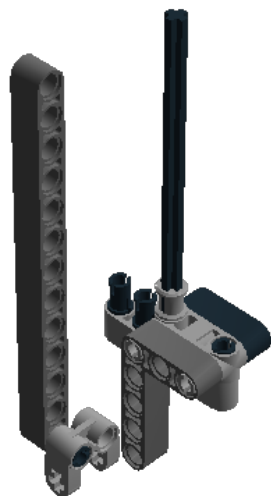


1 x

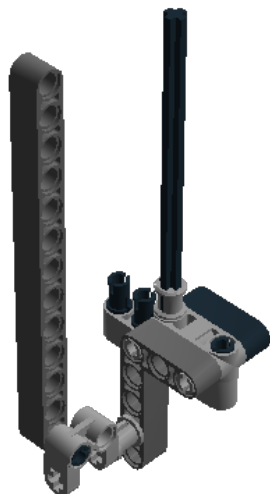


1 x





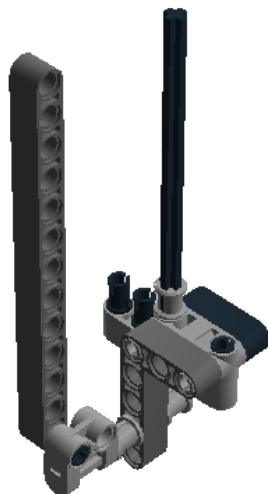
1 x



1 x



1 x



1 x



1 x



1 x



1 x



1 x



1 x



1 x



1 x



1 x



1 x



1 x



1 x



1 x



1 x





1 x



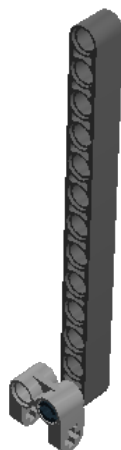
1 x



1 x



1 x





1 x



2 x



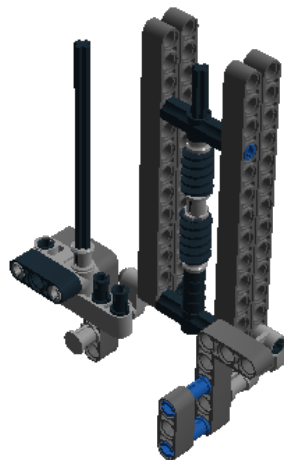
1 x



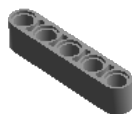
1 x



2 x



1 x



3 x



1 x





1 x



1 x



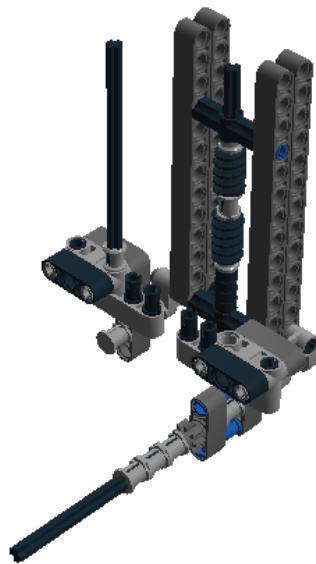
1 x



3 x



1 x



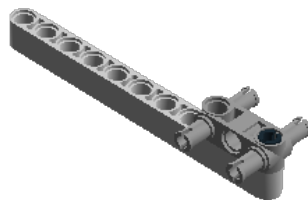
1 x



1 x



1 x



1 x



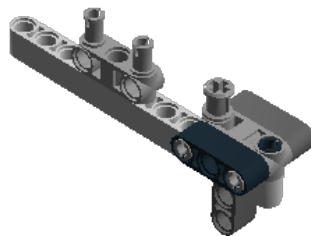
1 x



1 x



1 x



1 x



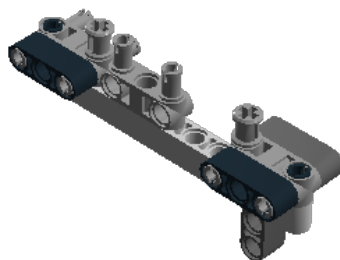
1 x

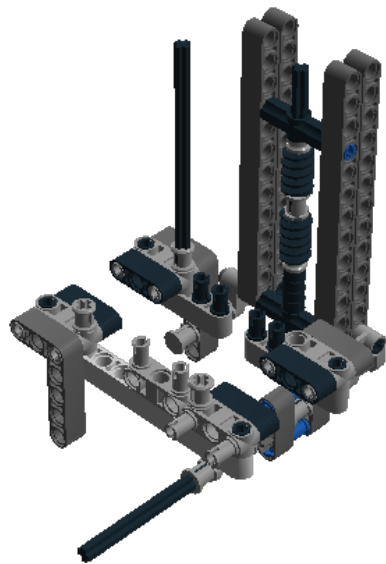


1 x



1 x





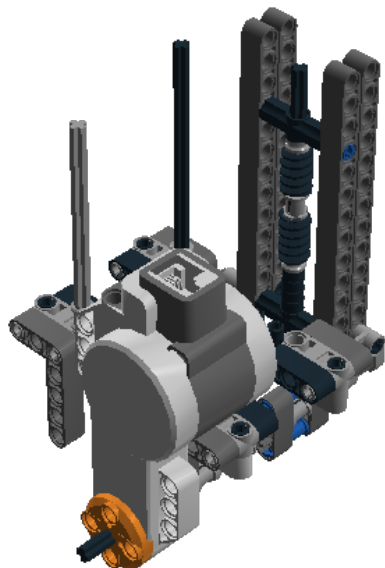
1 x



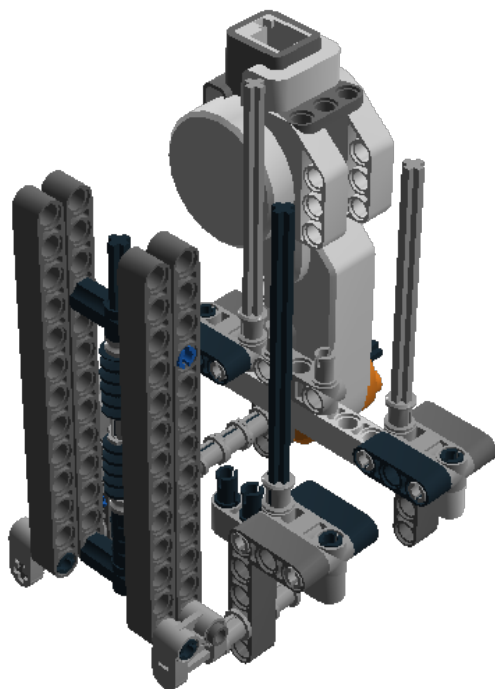
1 x



1 x



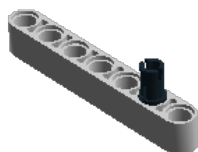
1 x

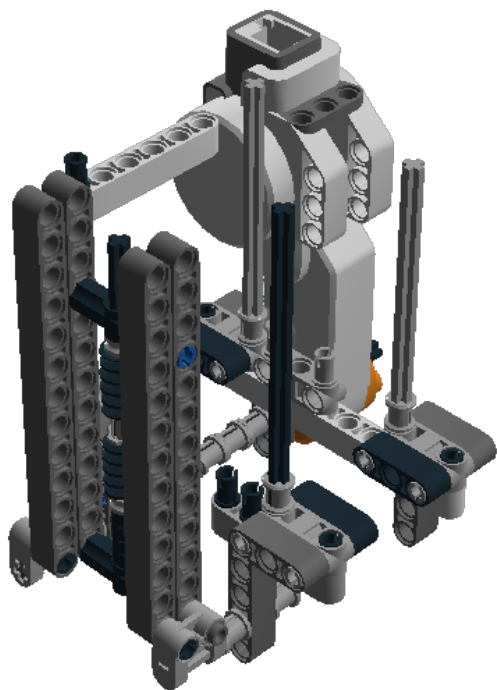


1 x



1 x



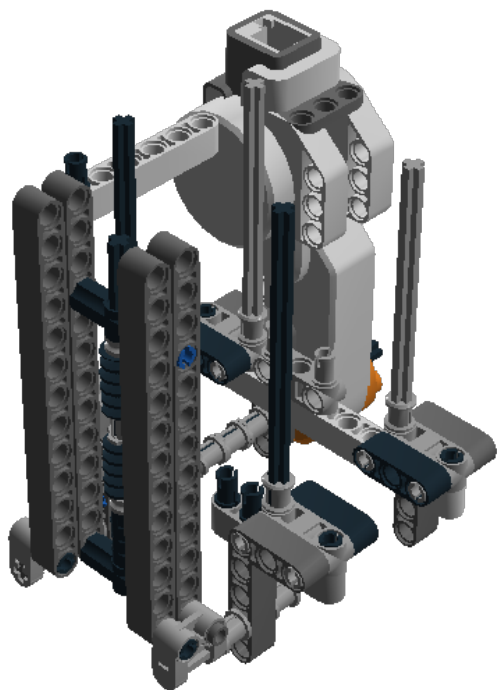


1 x



1 x

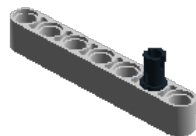


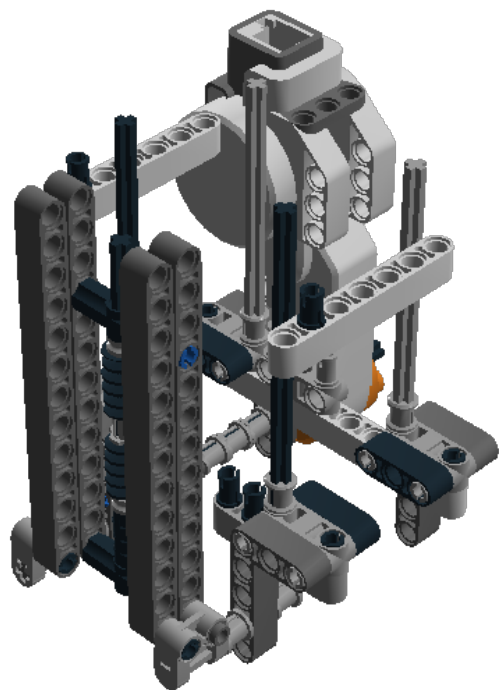


1 x



1 x

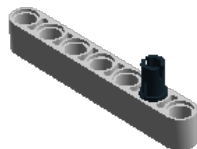


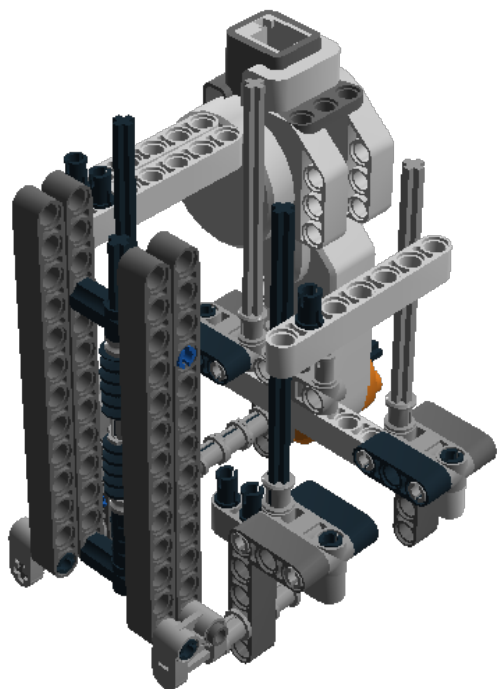


1 x



1 x

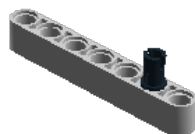


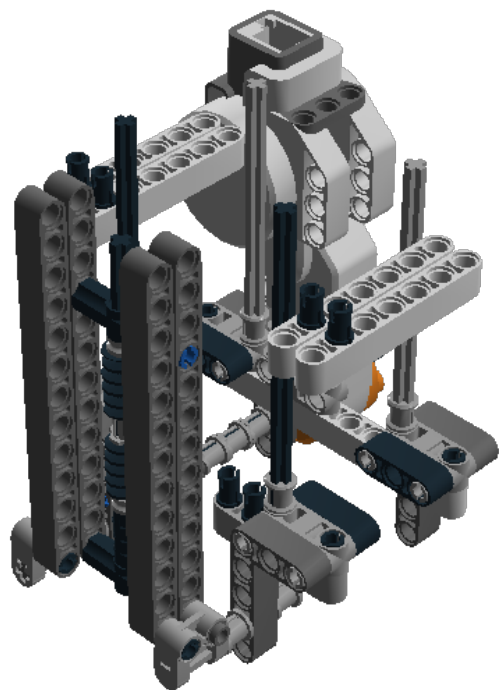


1 x



1 x

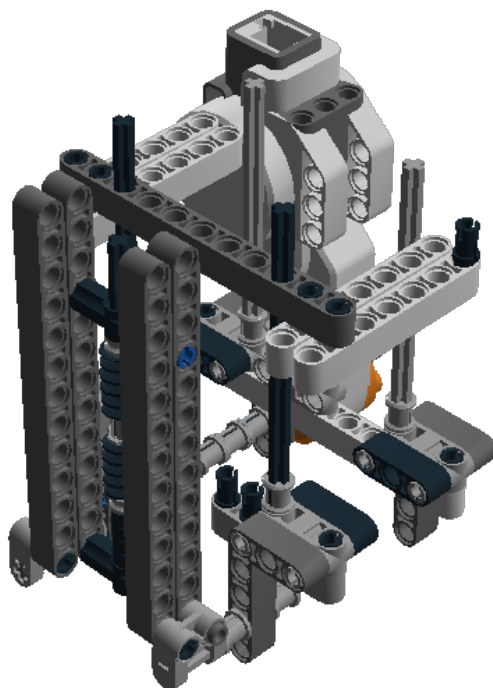




1 x



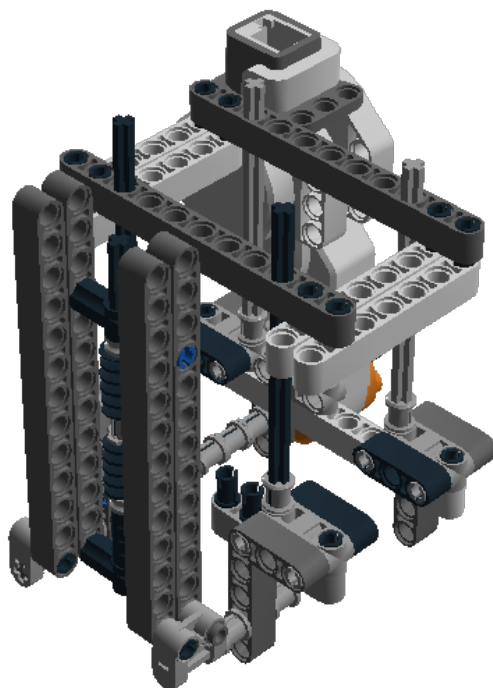
1 x



1 x



3 x



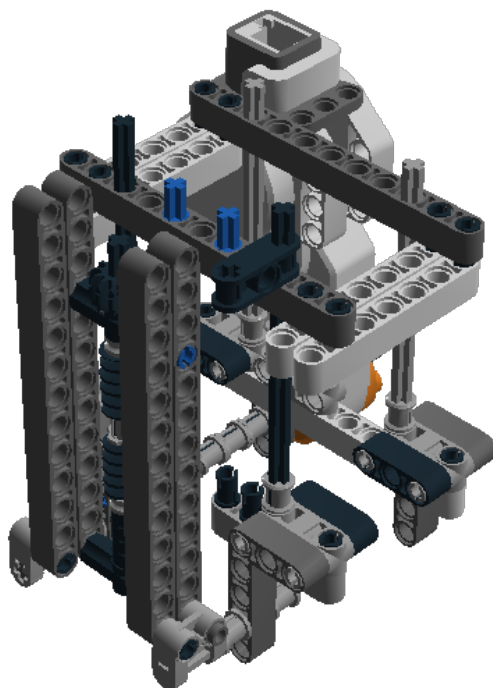
2 x



1 x



1 x



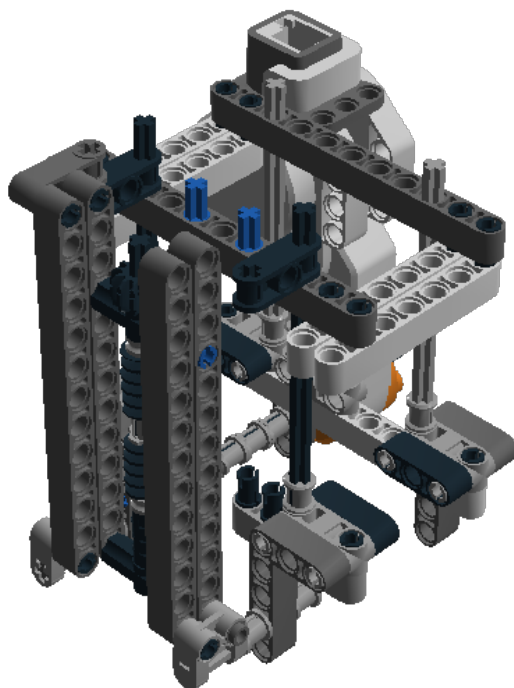
2 x



1 x



1 x



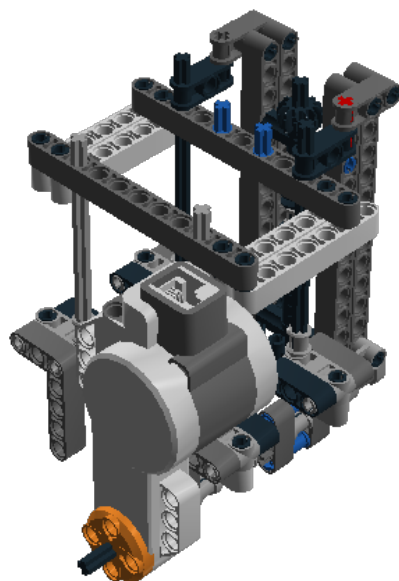
1 x



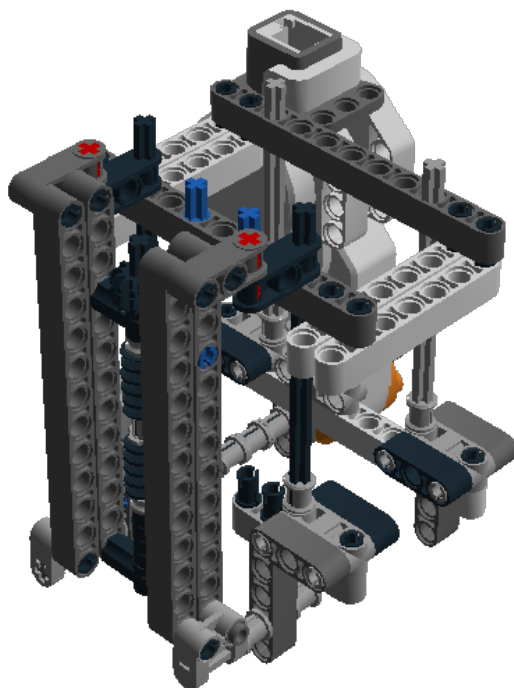
2 x



1 x



1 x



1 x

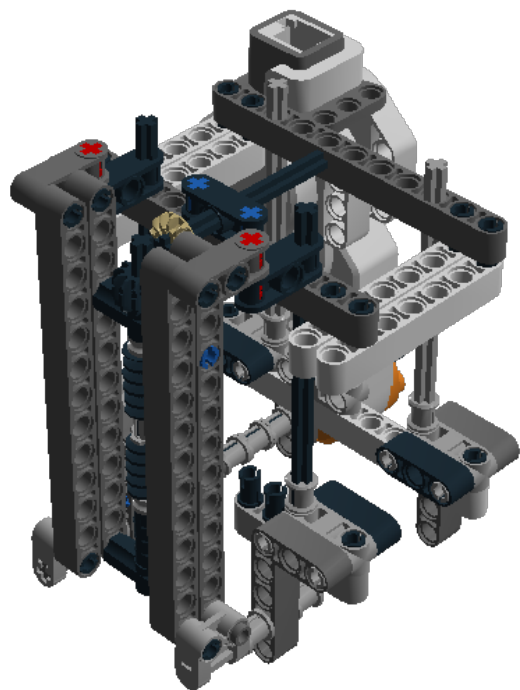


1 x



1 x





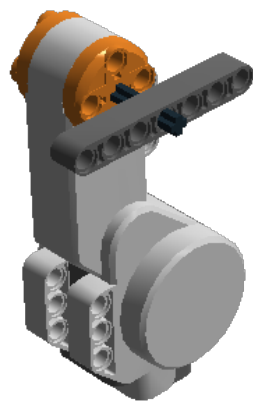
1 x



1 x



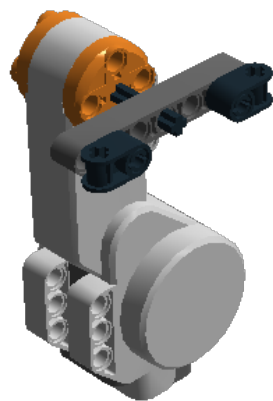
1 x

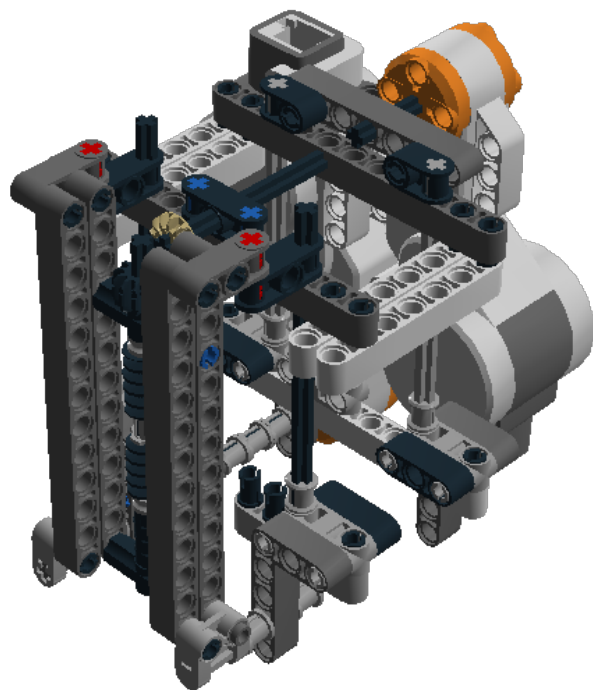


2 x



2 x





1 x



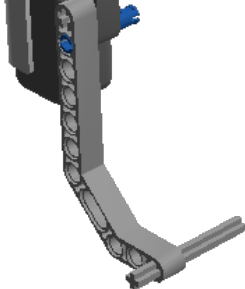
1 x



1 x



1 x



1 x



1 x





2 x




1 x




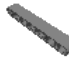
1 x  4296929 Push sensor - Bright Orange,Medium Stone Grey,Dark Stone Grey,Light Stone Grey


2 x  4297008 Tacho Motor - Bright Orange,Dark Stone Grey,Light Stone Grey

4 x  4142822 TECHNIC 3M BEAM - Black

1 x  4210751 TECHNIC 3M BEAM - Dark Stone Grey


2 x  4211651 TECHNIC 5M BEAM - Medium Stone Grey


1 x  4495931 TECHNIC 7M BEAM - Dark Stone Grey


4 x  4297199 TECHNIC 7M BEAM - Light Stone Grey


2 x  4210755 TECHNIC 11M BEAM - Dark Stone Grey


1 x  4297200 TECHNIC 11M BEAM - Light Stone Grey


4 x  4522937 TECHNIC 13M BEAM - Dark Stone Grey

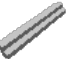
4 x  4210753 TECHNIC ANG. BEAM 3X5 90 DEG. - Dark Stone Grey

2 x  4234240 DOUBLE ANGULAR BEAM 3X7 45° - Medium Stone Grey


2 x  4211573 1/2 BUSH - Medium Stone Grey


2 x  4142865 2M CROSS AXLE W. GROOVE - Bright Red


24 x  4121715 CONNECTOR PEG W. FRICTION - Black

1 x  4211815 CROSS AXLE 3M - Medium Stone Grey


1 x  4186017 CONNECTOR PEG/CROSS AXLE - Brick Yellow


9 x  4211622 BUSH FOR CROSS AXLE - Medium Stone Grey


4 x  4206482 CONN.BUSH W.FRIC./CROSSALE - Bright Blue


1 x  4107083 CROSS AXLE, EXTENSION M/3 RIBS - Black


3 x  4514553 CONNECTOR PEG W. FRICTION 3M - Bright Blue


3 x  4211086 CROSSAXLE 3M WITH KNOB - Dark Stone Grey


2 x  4211639 CROSS AXLE 5M - Medium Stone Grey


2 x  4173668 CROSS BLOCK 90° - Black


2 x  370626 CROSS AXLE 6M - Black


4 x  4211865 2M FRIC. SNAP W/CROSS HOLE - Medium Stone Grey


3 x  4121667 DOUBLE CROSS BLOCK - Black

2 x  4107783 ANGLE ELEMENT, 180 DEGREES [2] - Black


2 x  4210857 CROSS BLOCK 3M - Dark Stone Grey


2 x  4535768 CROSS AXLE 9M - Medium Stone Grey


3 x  373726 CROSS AXLE 10M - Black


2 x  4107767 ANGLE ELEMENT, 90 DEGREES [6] - Black


2 x  4211889 TECHNIC CROSS BLOCK/FORK 2X2 - Medium Stone Grey


1 x  370826 CROSS AXLE 12M - Black

5 x  4225033 BEAM 3 M. W/4 SNAPS - Medium Stone Grey

1 x  4565452 CONICAL WHEEL Z12 - Brick Yellow

1 x  4514559 GEAR WHEEL T=8, M=1 - Dark Stone Grey

1 x  4177431 DOUBLE CONICAL WHEEL Z12 1M - Black

2 x  471626 WORM - Black