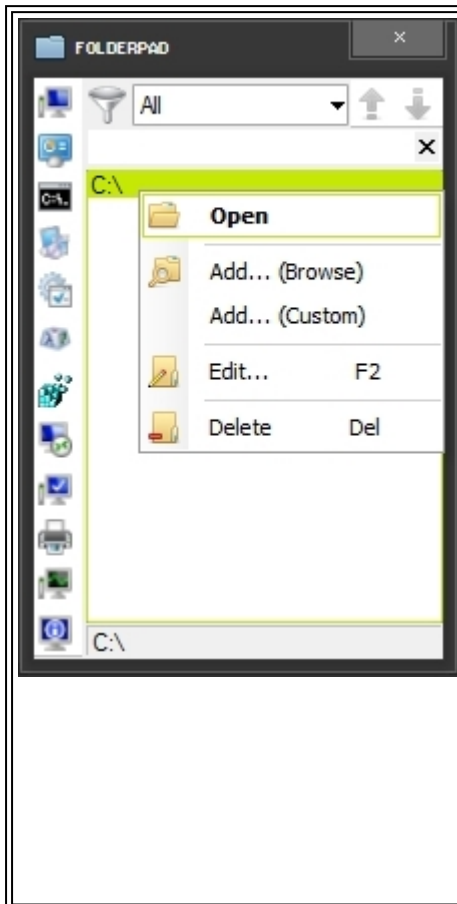


SysPad

FolderPad



This window is accessed by **single-clicking** the SysPad icon in the Notification Area.



NOTE: The default **single-clicking** window can be changed in the Settings.

The purpose of this window is to make accessing folders that you may use a lot, quicker and easily accessed straight from your Taskbar.

Some more common folders/locations are located on the left of the window with button icons, especially 'My Computer' since it is not considered a folder by Windows.

Right-clicking on the main listbox area of the window will give you several context menu options to add and edit folder entries.

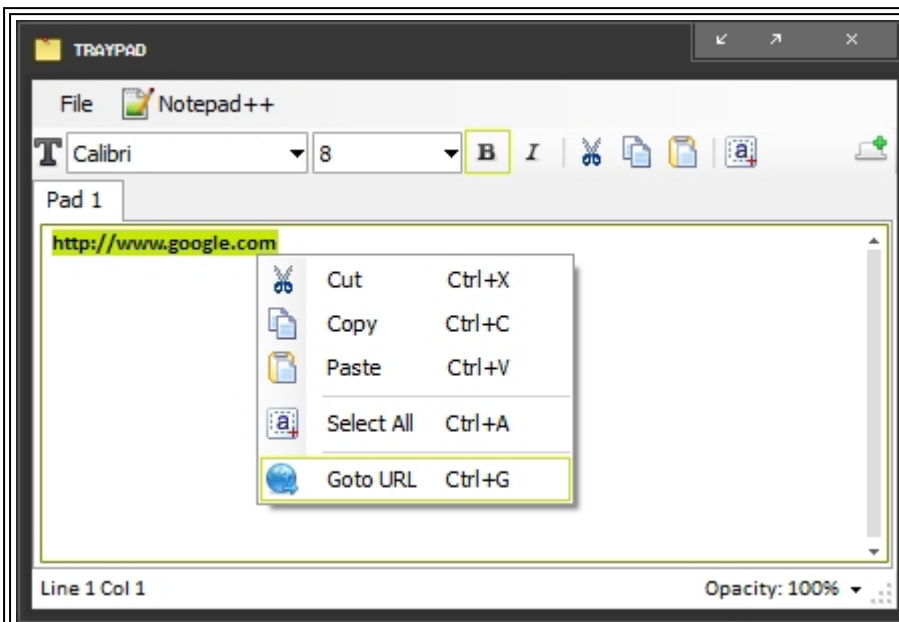
Double-clicking an entry will allow you to open the folder.

You can also add a folder by dragging and dropping it onto the listbox of folders.

NOTE: Some options will not be available if a folder location is not selected.

NOTE: When adding a custom path, it must with '<drive>:\' or a UNC path notation of '\\\' to be valid (ex: CORRECT: C:\Windows\, \\cronus\data\)

TrayPad



This window is accessed by **right-clicking** the SysPad icon in the Notification Area and choosing the TrayPad option.

NOTE: The default **single-clicking** window can be changed in the Settings.

If you use Notepad++ and are keeping some programming notes on your TrayPad, you can easily export the text of a pad by **right-clicking** it to export it to Notepad++.

NOTE: You **MUST** have the Notepad++ installed or the Notepad++ menu option and Export option will not be available.

Each tab contains a separate textbox and each keystroke is saved while typing.

This removes the need to save text after typing, and allows for quick access to simple notes right from the Notification Area.

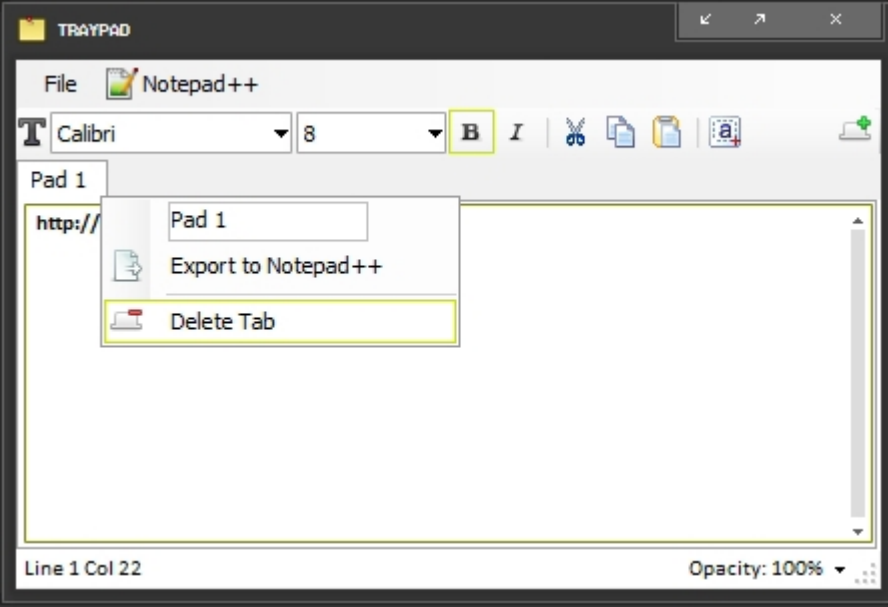
Also, the text in each tab can be saved out individually to a text file for use in Notepad or other text editing programs.

Each tab can be [renamed](#) for quick reference as to what may be contained in that tab. Tabs can also be sorted by dragging them to a new location.

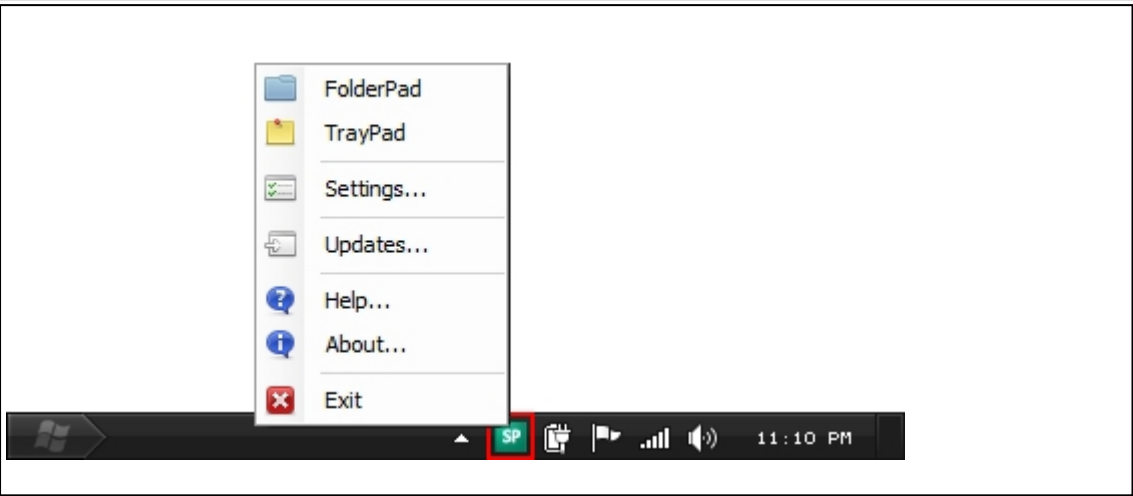
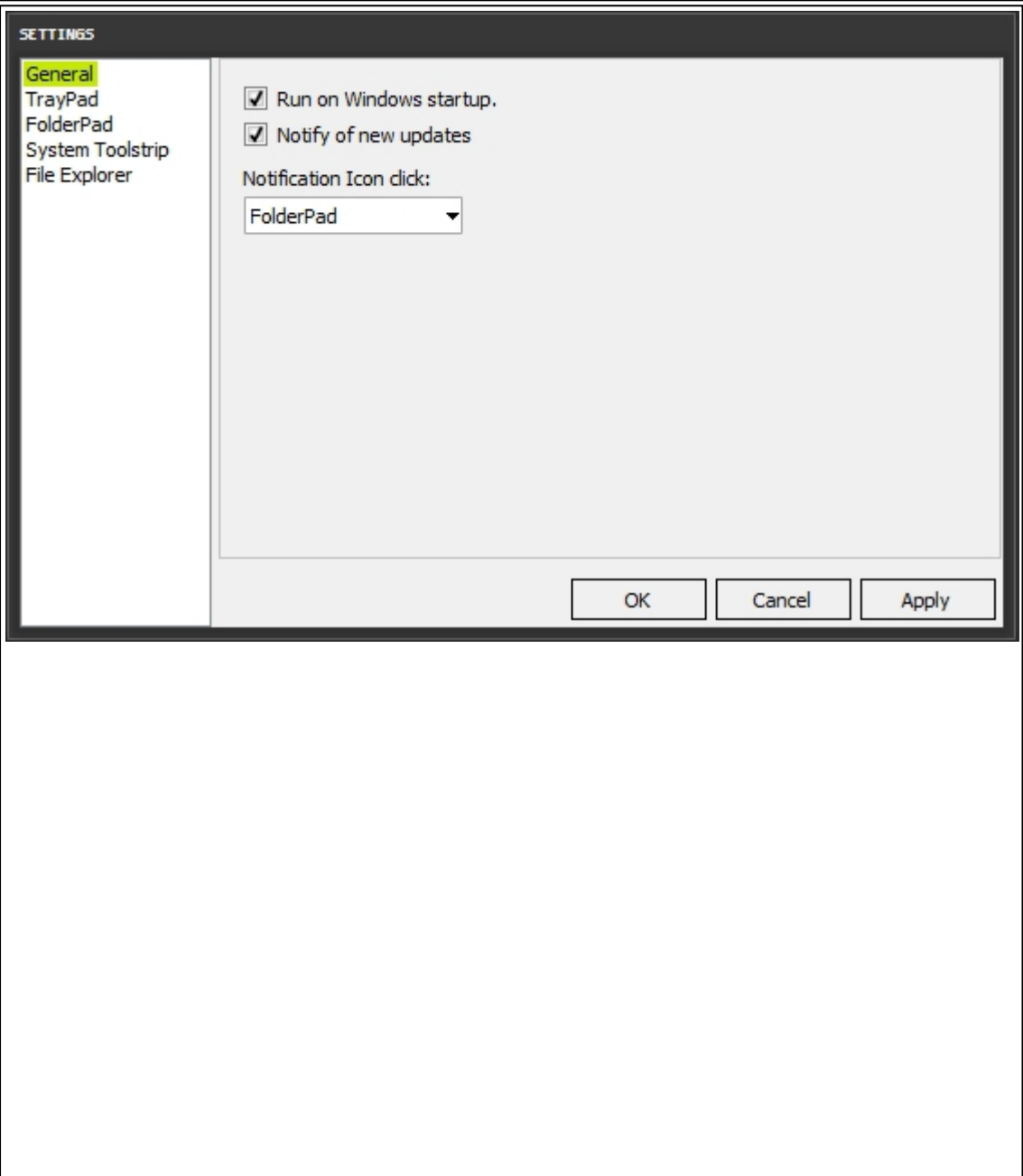
Each tab can have their own settings for font styling. The information in the text toolbar will change when switching tabs to reflect that tab's font settings.

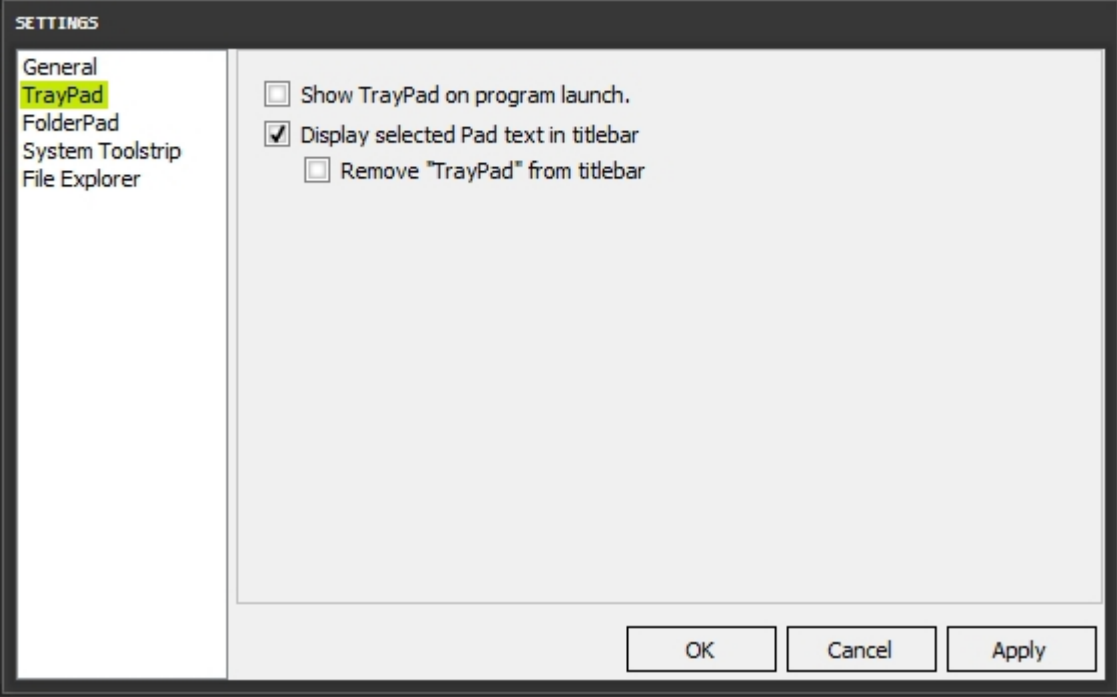
To keep TrayPad on top at all times, you can choose the Always On Top option from the File menu, or use CTRL+T to toggle it on or off.

The TrayPad window can also have its Opacity set. There is a

	<p>dropdown button in the status bar that works in 5% increments.</p> <p>URL addresses can be easily launched from a Pad by highlighting then right-clicking the selection and selecting [Goto URL].</p> <p>NOTE: All url's MUST begin with 'http://', 'https://', or 'ftp://' to be valid (ex: CORRECT: http://www.google.com, WRONG: www.google.com)</p>
	<p>You can customize the tab's name by right-clicking a Tab on the TrayPad window.</p> <p>From here, you will be able to rename your tabs to help distinguish the content contained inside each Pad.</p> <p>This is also where you can export the pad's text to Notepad++ if you have the Notepad++ installed.</p> <p>By clicking on the Notepad++ menu option in the menu bar, you can also set the export options: Programming syntax language and if it opens in a new Tab or Window.</p> <p>NOTE: You MUST have the Notepad++ installed or the Notepad++ menu option and Export option will be grayed out.</p>

Settings

	<p>The settings are accessed by right-clicking the notepad icon in the Notification Area.</p>
	<ul style="list-style-type: none"><input type="checkbox"/> Run on Windows startup: Will cause SysPad to launch during Windows start up.<input type="checkbox"/> Default Double-click window: Allows to change the default window that happens when double-

	<p>clicking the Notification Area.</p> <p>The Export/Import feature of SysPad data has been indefinitely disabled as some new programming changes have caused the old method (programatically) to not be viable. A new method is being searched for, but is not guaranteed.</p>
	<p>Show TrayPad on program launch: Shows the TrayPad as soon as SysPad is launched.</p> <p>Display selected Pad text in Titlebar: Will display the tab text in the Titlebar ("TrayPad - Pad1").</p> <p>Remove "TrayPad" from TitleBar: Will display the tab text in the Titlebar with "TrayPad" ("Pad1").</p>

SETTINGS

General
TrayPad
FolderPad
System Toolstrip
File Explorer

☐ Display UNC paths
(Uniform Naming Convention)

☒ Show System Toolstrip buttons
Location of System toolstrip:

Left

Fonts & Colors

T A A

FolderPad Style

Tag Filter List

School
Entertainment
Programming
System
Shared

OK

Cancel

Apply

☐ **Display UNC Paths:** Displays UNC (Uniform Naming Convention) path names on the FolderPad.

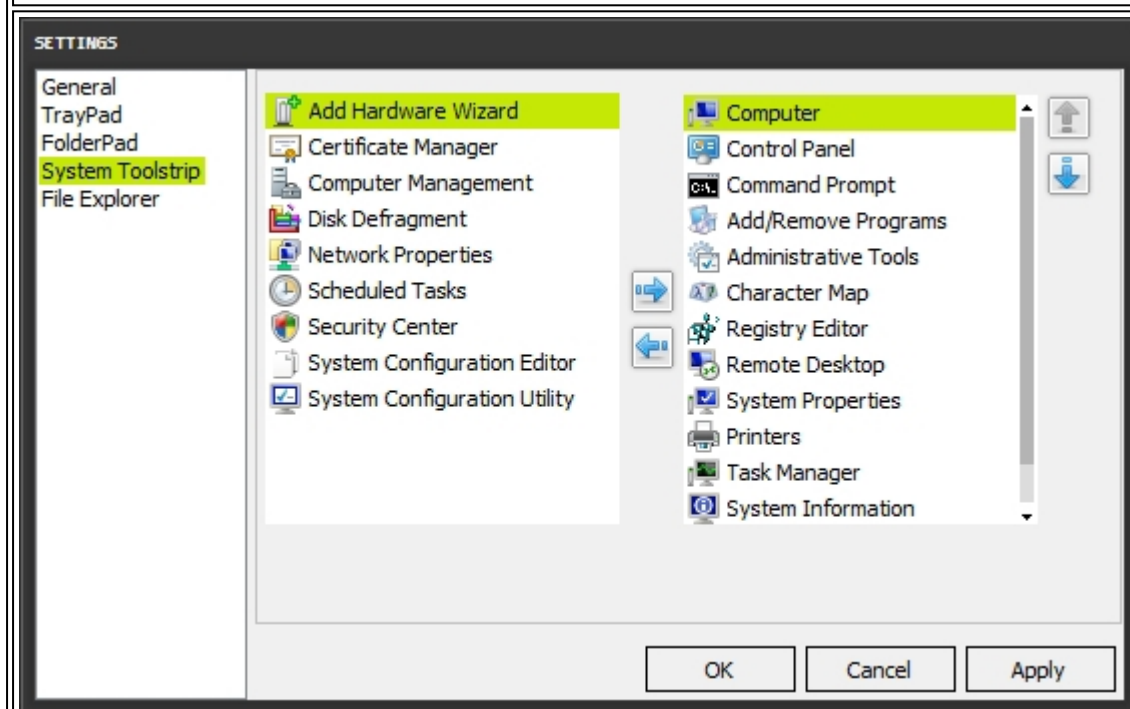
☐ **Show system toolstrip buttons:** Shows the Toolstrip buttons on FolderPad.

☐ **Location of System toolstrip:** Chooses placement of toolstrip (Left|Top|Bottom).

Tags can be

added or deleted from this screen. (Note that when adding a folder to FolderPad, if a Tag is typed in that isn't already in the list, it will ask if you want to add it.)

NOTE: Learn more about UNC here: [Wikipedia](http://en.cppreference.com/w/cpp/string/basic/basic_ncp).



This is where you can customize the toolstrip on the FolderPad. You can choose which buttons will appear and sort them in the order you would prefer.

SETTINGS

General

TrayPad

FolderPad

System Toolstrip

File Explorer

☐ Enable Altap Salamander support

Executable location:

☐ Use SHIFT-DoubleClick to launch Salamander
(Normal Double-Click will open Windows Explorer)

Parameters

Titlebar Prefix:

Icon Color

☒ Default
 ☐ Red
 ☐ Green
 ☐ Blue

Window

☒ Left
 ☐ Right

[Download Altap Salamander](#)

OK

Cancel

Apply

Currently, SysPad only supports Altap Salamander as a custom File Explorer.

There are many popular Windows Explorer replacements, but out of the 20 that were reviewed, only 6 were found to support command line launching, which is what makes integrating them with SysPad necessary. Of the six that were found, Altap was decided to be the one implemented for now.

It is possible, that in the future, support for other File Explorers may be added voluntarily, or by request.

The decision to support only Altap Salamander out of the six products was to reduce variables needed for such a task and also that quality software is preferred and that Altap Salamander was the best

9 / 15

	<p>quality product of the six reviewed.</p> <p>Altap Salamander will replace Windows Explorer when launching folders from FolderPad.</p> <p>Enabling the SHIFT feature, however, will allow the user to use Windows Explorer and Altap Salamander interchangeably.</p> <p>Windows Explorer will launch by default, but when holding [Shift] down while double-clicking, pressing [Enter] or using the context menu option will launch Altap Salamander instead.</p> <p>A link has been provided to download Altap Salamander from their website.</p> <p>NOTE: Altap Salamander is NOT a free program. A trial may be used for 30 days, but a license must be purchased to continue use.</p>
--	---

Change Notes

4.10.18.6 - 10/25/11 - [FIXED] Tag Edit prompt would still show even with no tag selected to edit (Settings) 4.10.17.6 - 08/17/11 - [FIXED] When pressing Enter or double-clicking with nothing selected, it does not open the C:\ folder anymore. 4.10.16.6 - 08/17/11 - [FIXED] Does not give exception when focus is in type filtering box and arrowing past last item. 4.10.15.6 - 08/17/11 - [FIXED] If there is text in the filter after editing, do not remove it. 4.10.14.6 - 08/17/11 - Allow F2 to edit selection rather than text when focus is in text filtering box. 4.10.14.5 - 08/17/11 - Added some more characters to the allowed list for text filtering. Searching crashes with certain characters. The below list is the allowed character list for type-filtering. ABCDEFGHIJKLMNOPQRSTUVWXYZabcdefghijklmnopqrstuvwxyz0123456789_+&!@#%&(){} ;:<,>./
4.10.14.4 - 04/30/11 - [minor] Do not load New Folder option if pressing enter in Filter Box (FolderPad) 4.10.14.3 - 04/30/11 - [minor] Allow Up/Down keys while focus is in Filter Box (FolderPad) 4.10.14.2 - 04/30/11 - [FIXED] Cannot use ' or [in type filtering due to limitations on DataTable filtering (filter textbox for only alphanumeric, space, delete and backspace) 4.10.13.2 - 04/30/11 - [FIXED] Keep edit from going back to "All" tag (FolderPad) 4.10.12.2 - 04/30/11 - [FIXED] Fix checkbox in settings (Settings) 4.10.11.2 - 04/30/11 - [FIXED] Code was incomplete and would not save folders.xml during export (Settings)
4.10.10.2 - 04/19/10 - [FIXED] When adding the feature from update 4.10.8.2 yesterday, I forgot to keep the program from trying to select index 0 when there is no items in the list, which causes the program to crash. (FolderPad)
4.10.9.2 - 04/18/10 - [FIXED] A major issue was found in the conversion process of folder items. Unfortunately, the testing phase could not catch this. If you have noticed issues with folders displaying, this update should fix that. If not, please contact me with as many specifics as possible. All original folder information is still intact. (FolderPad) 4.10.8.2 - 04/15/10 - [minor] While type-filtering, the first item in the list of folders will always be selected. (FolderPad)
4.10.8.1 - 04/13/10 - [FIXED] Wrong folders opening due to wrong index being referenced if entries were being sorted/filtered. (FolderPad)
4.10.7.1 - 04/12/10 - [minor] Moved Path display to label at bottom of window. Label will display the path of the entry the mouse is hovering over. Will default to the SelectedItem when the cursor leaves the ListBox (FolderPad) 4.10.7.0 - 03/31/10 - Added the ability to type in a textbox and filter the visible entries based on text contained in the entry name (FolderPad) 4.9.7.0 - 03/26/10 - Added a tagging system so that entries can be filtered from a drop-down menu (FolderPad)
4.8.7 - 01/20/10 - [FIXED] Program crashes when accessing About screen due to issue of retrieving version number from executable properly (FolderPad) 4.8.6 - 01/14/10 - Folders can be dragged from the Windows OS onto FolderPad and added by that means (FolderPad)
4.7.6 - 11/10/09 - Added ability to turn off update notifications. Also rearranged settings and modified the automatic updater executable(SysPad)
4.6.6 - 10/28/09 - [FIXED] Possible bug where saving the program settings on program shutdown would cause the TrayPad coordinates to go to -32000, -32000 and making the TrayPad disappear. If coordinates have been set to this, they will be reset to 0, 0. I will continue to watch to see if the bug persists and try to find out exactly what it is. (TrayPad)
4.6.5 - 09/26/09 - [FIXED] New Tab name not displaying in Titlebar when changed (TrayPad) 4.6.4 - 09/03/09 - Allows the Command Prompt option on the toolbar to be elevated as administrator. (FolderPad) 4.5.4 - 09/03/09 - Added options to change opacity of TrayPad in 10% increments from 30 to 100. Using CTRL+W or CTRL+S, 1% increments are possible. (TrayPad) 4.4.4 - 09/03/09 - Always on Top option placed in File menu option of TrayPad. Shortcut CTRL+T also enables/disables this feature quickly. (TrayPad) 4.3.4 - 09/02/09 - Enabled Maximize button on TrayPad (TrayPad) 4.2.4 - 09/01/09 - [FIXED] TrayPad not loading properly with Custom tab names (TrayPad) 4.2.3 - 09/01/09 - [FIXED] FolderPad did not hide when clicking on the printers button in the toolbar (FolderPad) 4.2.2 - 09/01/09 - [FIXED] Startup registry entry not deleting when unchecking "Run on Windows startup" in the settings (SysPad) 4.2.1 - 09/01/09 - [FIXED] Could add weblinks or files while doing an Edit Path. Used same restriction code as when creating a custom entry to limit to folders. (FolderPad)

<p>4.2.0 - 08/31/09 - Retrieved 16x16 icons for buttons from Win7. They display clearer since they are not 32x32 icons being resized by the program. (FolderPad)</p> <p>4.1.0 - 08/31/09 - Added version number to About window. (About)</p> <p>4.0.0 - 08/31/09 - Automatic updater created. SysPad now checks for updates and can download a new installer. (SysPad)</p>
<p>3.8.4 - 07/29/09 - Reenabled the Minimize button (TrayPad)</p> <p>3.8.3 - 07/28/09 - Can now set TrayPad to display the currently selected tab's text in the titlebar, with or without "TrayPad" (TrayPad)</p> <p>3.7.3 - 07/27/09 - FIXED: All settings in the Settings window utilize the My.Settings namespace. Between version increments, settings would be lost. Have figured out where the settings are kept and how to have the settings persist between version updates. (SysPad)</p> <p>3.6.2 - 07/25/09 - Notepadpp executable path is now automatically detected. Notepadpp tab has been removed from Settings. (SysPad)</p> <p>3.5.2 - 07/21/09 - Better error handling; more Try..Catch and If..Else statements. (SysPad)</p> <p>3.5.1 - 07/21/09 - Added ability to import and export data. This includes TrayPad pad data and FolderPad locations. (SysPad)</p> <p>3.4.1 - 07/19/09 - Added many new button choices for the FolderPad toolbar. In Settings, buttons can be selected to display and the order in which they display. They also are made up of the official icons in Vista for that program. (FolderPad)</p> <p>3.3.1 - 07/15/09 - F2 has been assigned to Renaming the currently selected folder (FolderPad)</p> <p>3.2.1 - 07/07/09 - The toolbar on FolderPad that has common system folder can now be docked to the top and bottom of the window as well. Left it off the right side since it is so close to the scrollbar (FolderPad)</p> <p>3.1.1 - 07/06/09 - Implemented "Snap-To" functionality. When TrayPad or FolderPad are 20 pixels away from the edge of the screen (looks for Taskbar) it will attach itself to the edge. (SysPad)</p> <p>3.0.1 - 07/06/09 - FIXED: checks to be sure Notepad++ and Altap Salamander are still installed at startup, when loading settings, or when opening a folder, if they are set to be used. If these didn't exist, the program would crash. (SysPad)</p>
<p>06/26/09 - Implemented launch support for the custom File Explorer, Altap Salamander (SysPad)</p> <p>06/24/09 - Program Exit, Settings, Help and About windows have been moved from TrayPad to a right-click context menu from the Notification Icon (SysPad)</p> <p>06/24/09 - Changed basic functionality of SysPad. Instead of right and left click events bringing up FolderPad and TrayPad respectively, you can now define, in the Settings, which window is the default window to open upon double-clicking the Notification Icon (SysPad)</p> <p>06/24/09 - Added Separate Color choices for TrayPad and FolderPad (Settings)</p> <p>06/24/09 - Restructured the Settings window. Now is in Listview format like many popular program option setups (Settings)</p> <p>06/23/09 - Added Ability to manually remove Notepad++ path (Settings)</p> <p>06/19/09 - FIXED: Resize drawing issues. (SysPad)</p> <p>06/19/09 - FIXED: After cancelling a custom path, invalid path message would still display. (FolderPad)</p>
<p>06/01/09 - Resolved an issue when Vista has UAC turned on, data cannot be written for SysPad. In an attempt to comply with Windows Security standards, data files have been moved to the Application Data folder for the current user. This also removes the need for elevation to use SysPad. (SysPad)</p> <p>06/01/09 - Resolved an issue with the second Pad losing its data. Cause is unknown as I really didn't change any code to resolve it, I just recompiled. :) (TrayPad)</p>
<p>05/27/09 - Added ability to insert tab spaces in the pads instead of pressing Tab moving to different controls. (TrayPad)</p> <p>05/27/09 - Added ability to Export pad text to Notepad++. You can also select a programming language for syntax highlighting (TrayPad)</p> <p>05/23/09 - Moved renaming feature from settings to a right-click on each tab. (TrayPad)</p> <p>05/23/09 - Can reorder tabs by dragging and dropping them (TrayPad)</p> <p>05/23/09 - Changed Notification Area icon (SysPad)</p> <p>05/20/09 - Added help file. (SysPad)</p> <p>05/19/09 - Added shortcut keys for various operations. (TrayPad)</p> <p>05/19/09 - Fixed bug where invalid addresses would still try to launch when using shortcut key (CTRL+G). (TrayPad)</p> <p>05/21/09 - Fixed bug where certain program launch points (start menu, desktop shortcut, etc) would not launch help file properly. (SysPad)</p> <p>05/15/09 - Added ability to rename tabs. (TrayPad)</p> <p>05/15/09 - Added "Select All" to context menu (TrayPad)</p>
<p>05/11/09 - Determine issue with XP shutdown halting</p> <p>05/11/09 - Add options for preset toolbar buttons for folders like My Computer, C:\, D:\, Recycle Bin, etc. (FolderPad)</p> <p>05/06/09 - Issue with Multiline Textboxes only using 32767 characters. MaxLength was supposedly an ignored property. (TrayPad)</p> <p>05/06/09 - Add Open option in Context Menu (FolderPad)</p> <p>05/06/09 - Allow Enter to access highlighted folder (FolderPad)</p>

05/06/09 - Fix Custom path form (not working at all. Lost code during transition of creating a new project) (FolderPad) 05/06/09 - MenuBar Options (Remove toolbar) (TrayPad) 05/06/09 - Add CTRL shortcuts for Saving and Printing tabs (TrayPad) 05/06/09 - Add right-click ability to highlight a URL and navigate to it from text areas (TrayPad)
--

11/12/08 - Uploaded new release addressing bug. 11/12/08 - FilePath bug found. On system load, program had trouble retrieving required text files from program root folder. (Changed folder to C:\"). (SysPad) 11/05/08 - When right-clicking on FolderPad, options that should not be available now get disabled. (FolderPad) 11/05/08 - Fixed some minor cosmetic issues. (SysPad) 11/04/08 - Created a status bar and keeps track of Line/Column in selected Pad. (TrayPad) 10/29/08 - Changed from a MenuBar to a ToolStrip. (TrayPad) 10/21/08 - Added Icons to context menus. (FolderPad) 10/21/08 - Fixed various coding issues that were overlooked when implementing the UNC conversion option. (FolderPad) 10/21/08 - Added support for right-click selection of an item in the listbox. (FolderPad) 10/16/08 - Added support for UNC path display option. (FolderPad) 10/16/08 - Added Tooltips to various controls. (SysPad) 10/14/08 - Made Tab selection more apparant by bolding the text of the currently selected Tab. (TrayPad) 10/06/08 - Initial project was launched

About SysPad

About SysPad

SysPad originally began as the idea of TrayPad; a quick, easy way to access notes without having to constantly open Notepad and save files. I then came across a program a co-worker was using that I found quite interesting. After some time of using it, I realized it was very limited; you could not sort or edit the entries in any way, and you were limited to the path instead of a descriptive name. This prompted me to create FolderPad and put both programs together into one and make some more customized options and abilities. I've had input from a few people and am grateful for all the help I've received in finding and fixing bugs and making the program more versatile. This program was written in VB.NET 2008 Professional and built on the 3.5 .NET Framework.

About the Author

I have been playing with computers since I can remember. The first computer in my house was a [IBM Tandy 1000](#) when I was around 5. I remember playing the games it came with and messing with the paint program. When I was about 13, I got a hand-me-down from my dad and not long after that, I had made my first webpage with the Geocities WYSIWIG webpage maker. After some time, I started teaching myself HTML, PHP, CSS and Javascript while I was in high school. My senior year, my school had a Visual Basic 6 programming class and I was hooked. After high school, I went to a couple colleges, and about 5 years later, finally went to ITT Technical Institute to get an Associates Degree in Software Applications and Programming, graduating in March of 2009 as Valedictorian with Honors. I like to focus mainly on .NET technologies, and Visual Basic more specifically. I am currently working in the IT/DP department of a mailing company, creating letters and merging variable data into them via automated programmed processes using, mainly, Visual FoxPro 9 and some mailing industry specific software. My main goal, however, is to find a job doing programming, and hopefully in Visual Basic.NET.

Created with the Personal Edition of HelpNDoc: [Easily create iPhone documentation](#)
